



MAUNGAHARURU
TANGITŪ

PARIKARANGARA

Muttonbirds return to Maungaharuru



Last month, tītī (Cooks Petrel) were welcomed back to Maungaharuru by representatives of our Hapū, along with Ngāti Hineuru and Ngāti Pāhauwera. Kaumatua Matt Eru blessed the special fence that was built on top of the maunga to protect the birds from predators. Tītī chicks were flown from Hauturu (Little Barrier Island) and arrived on the maunga by helicopter - to the delight of our Kōhanga Reo tamariki. The chicks were blessed, fed and put into their burrows. A couple weeks later the tītī flew away out to sea. They will return to land to breed in about 4 years time, hopefully on Maungaharuru. More transfers will happen in the next few years and volunteers are needed so let us know if you are interested in helping!

Coastal Pā of our Tīpuna

As part of our Treaty Settlement, some of our place names will be officially recognised, including three pā that together provided a strong defence for our tīpuna and our fishing grounds.



- Te Rae-o-Tangoio is a pā located in the Tangoio valley (on either side of the cutting on SH 2). It was initially called Te Rae-o-Turei (the head of the Turtle). Tangoio, a rangatira of the ancient Toi people, re-named the pā on his deathbed so that he would be remembered, and from that day it was known as Te Rae-o-Tangoio (the forehead of Tangoio). Our Hapū descend from Toi and Marangatūhetaua (of Ngāti Tū) and Tataramoa (of Ngāti Kurumōkihi) later occupied this pā.
- Ngāmoerangi is the name of a pā, reef and beach on the Tangoio foreshore. Marangatūhetaua placed some of his warriors at Ngāmoerangi pā under the leadership of Te Ruruku (of Ngāi Te Ruruku), who was a rangatira skilled in warfare. This pā provided protection from waka taua and invasion overland.
- Whakaari pā is located on the Tangoio headland. It is believed to have been named after Whakaari the tipuna for Ngāti Whakaari. It overlooked and protected the landing sites for waka on the bays below.

Opouahi



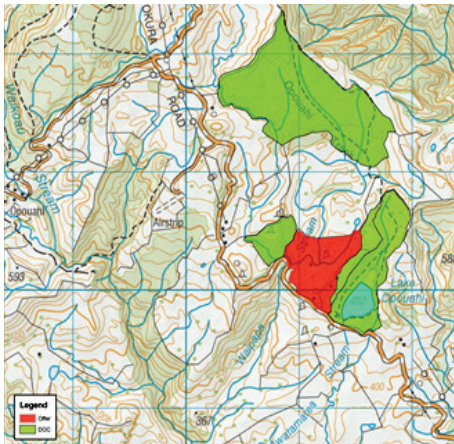
On a visit to Opouahi Scenic Reserve you can:

- See the carved Wharewaka
- Enjoy a picnic by the lake
- Admire the views on Maungaharuru
- Go for a bush walk

Opouahi is about an hours drive from Napier.

To get there:

Drive to Lake Tūtira and turn left at the Tūtira store. Follow the road, then turn left at the big brown sign (listing the reserves) onto Pohokura Road. Follow the gravel road. You will see a tall predator proof fence on the right and a green DOC sign for Opouahi Scenic Reserve.



Our Treaty Settlement package includes transfer of land at Opouahi to the Hapū (the red area in the map above, next to the Reserve shown in green). This land is currently used and occupied by ECOED (the Environment, Conservation and Outdoor Education Trust). ECOED run outdoor and environmental education programmes for Hawke's Bay schools and do important conservation work in the area. ECOED has been supportive in our negotiations for return of this site and we support their work.

ECOED developed the land from a farm into a "Wilderness Education Base" where the facilities have been kept basic to ensure an authentic outdoors experience. There are three camping areas each with a large open shelter, sinks, benches, storage for gear, toilets, running water and tent sites. Activities include rock climbing, kayaking, caving, tramping and planting of native species. Groups are also given the opportunity to see and touch a kiwi chick. We will explore options for our whānau to have wānanga and camping trips to Opouahi in the future.



Charlotte and Tane Taurima-Thomas pat a kiwi in front of the Wharewaka with their younger sister Rawinia Taurima-Nuku

Charlotte Taurima-Thomas went to Opouahi on her school trip with Taradale Intermediate. She spoke about it at the opening of the Wharewaka in December, 2012:

"I'm lucky enough to come here for school camps. It's so beautiful here and it's like really fun and we really get into it. One of my favourites has to be caving, because it's so adventurous. It's like an adrenalin rush. Patting the kiwi, that was so fun, I never thought I could do that!"

Punanga Te Wao Te Kōhanga Reo

Tēnā koutou e te whānau nō Tangoio

E tika ana ka mihi maioha i te tuatahi ki ngā mokopuna o Punanga Te Wao Te Kōhanga Reo. Mā koutou te ahi e muramura ana, kia ako ai tonu i Te Reo Māori me Ngā Tikanga o ō tātau Tipuna. Mā koutou hoki i ngā rangatira mō āpōpō. Mauri Ora.

Ngā Mokopuna

We currently have a full roll of 28 tamariki, of which 24 (86%) belong to our Hapū. As part of their learning, our tamariki often visit the Marae and Urupā (cemetery). We realise the importance of nurturing the love our tamariki have for their Marae me ōna tikanga (customs), for the future survival of our Marae. The perfect time to register your pēpī is while you are still expecting. There are many Hapū tamariki situated in Kōhanga Reo around Ahuriri, and our future plans include expanding the Kōhanga so we may accommodate our growing Hapū population.

Ngā Kaimahi

Our Kōhanga Reo is well-staffed with one kaiako (teacher), one kaiwhakahaere-a-tari (office manager), one ringawera (kitchenhand), and six kaimahi (workers). Five (55%) of the staff belong to our Hapū, including our kaiako. Our Kōhanga Reo supports whānau development and this is evident in the number of kaimahi who have, or have had tamariki attend Punanga Te Wao.

Kaiako - Aroha Taurima

Ko Teaiorangi Taurima (Tom) rāua ko Toi Pohio ōku Tipuna

Ko Wiremu Taurima (Pere) rāua ko Charlene King ōku Mātua

Ko Aroha Taurima tāku ingoa

Kāti rā. I te timatanga o te tau nei i hoki mai au i te haukāinga hai Kaiako mō Punanga Te Wao Te Kōhanga Reo. Ko āku mahi o mua he taura nō Te Wānanga o Raukawa, he Kaiāwhina mō te Kura Tuatahi o Ōtaki. I whakawhiwhia e au ēnei tohu i Te Wānanga o Raukawa, ko Te Poutūārongo Whakaakoranga (Teacher Total Immersion), Lores and Philosophy, me te Māori Management.

Nō reira e te whānau o Tangoio, ko taku hari me taku koa ki te hoki mai ki Te Kōhanga Reo o Punanga Te Wao. Kia manaakia, kia āwhinatia hoki te tuakiri o nga mokopuna, te whanaungatanga me te hapūtanga nō Tangoio.

Nahaku noa, Aroha

Punanga Te Wao Te Kōhanga Reo

Address: Tangoio Marae, SH2

Postal: PO Box 165, Bay View, Napier 4149

Phone: 06 8366378 or

Mobile: 021 2958974

Email: whanau@k08b051.kohanga.ac.nz

Web: www.tangoio.maori.nz/te-punanga-te-wao-kohanga-reo



Please vote for your Treaty Settlement!

This is it whānau - voting is now open to approve our Treaty Settlement.

- We need your vote. The number of votes matters, not just how many agree.
- You can vote on the internet, by post or at an Information Hui.
- Voting packs with voting papers and an information booklet were posted to all registered adult members of Maungaharuru-Tangitū Incorporated (MTI). If you haven't received yours please ring the Voting Helpline (tollfree) on 0508 666 104.
- Voting closes at 5pm on Wednesday 1 May 2013.
- For more information see the booklet, www.tangoio.maori.nz, ring 0800 TANGOIO (0800 826 4646), email info@tangoio.maori.nz, or attend an Information Hui:

| Date | Place | Time | Venue |
|-------------------|------------|---------------------------|--|
| Friday 19 April | Napier | 10 am Hui 12 pm Kai | Kaumātua Hui, RSA, Vautier St, Napier |
| Friday 19 April | Wellington | 6:30 pm Kai 7:30pm Hui | Totara Lodge, 68 Ararino St, Trentham, Upper Hutt |
| Saturday 20 April | Tangoio | 10 am Hui 12 pm Kai | Tangoio Marae, SH2, Napier |
| Sunday 21 April | Auckland | 10 am Hui 12 pm Kai | Waipuna Hotel, 58 Waipuna Rd, Mt Wellington, Auckland |

Tangoio Marae Trustees Corner

The Marae Trustees will call for Nominations to the exiting (1) Trustee vacancy in July 2013. The Election Day will be Saturday, 28 September 2013 and the Election Processes will be published in the next Parikaranga edition.

Advised by Bevan Taylor and Trevor Taurima, Marae Trustees.



Important Dates

| | |
|-----------------------|---|
| Friday 19 April | Kaumātua Hui (Treaty Settlement Information Hui) |
| Fri 19 - Sun 21 April | Hui-a-Hapū (Treaty Settlement Information Hui) |
| 1 May | Voting Closes (for the Approval of our Treaty Settlement) |
| 25 May (tbc) | Deed signing celebrations at Tangoio Marae |
| 28 May - 25 June | MTI komiti elections and MTT trustee elections |
| 29 June | MTI / MTT AGMs, Tangoio Marae AGM |

Maungaharuru-Tangitū Incorporated
Phone: 0800 TANGOIO (0800 826 4646)
Email: info@tangoio.maori.nz
Website: www.tangoio.maori.nz