



Print and Design by



MAUNGAHARURU
TANGITU

Maramataka 2012

Maungaharuru-Tangitu Incorporated
P O Box 3376
Hawke's Bay Mail Centre
Napier 4142
Free call 0800 TANGOIO / 0800 826 4646
Email info@tangoio.maori.nz
www.tangoio.maori.nz



Tangoio Marae gateway 2011
Photograph: Robin Shirkey

Kohitātea January



Ka tuwhera a Maungaharuru, ka kati a Tangitu,
Ka tuwhera a Tangitu, ka kati a Maungaharuru
When the season of Maungaharuru opens, the season of Tangitu closes,
when the season of Tangitu opens, the season of Maungaharuru closes.
On the gateway the fish represents collecting seafood on the coast in summer,
and the kereru, gathering food inland in the winter

Rāhina Monday	Rātū Tuesday	Rāapa Wednesday	Rāpare Thursday	Rāmere Friday	Rāhoroi Saturday	Rātapu Sunday
30 Auckland, Northland, Nelson & Buller Anniversaries 1st Term begins	31	December 2011 M T W T F S S 1 2 3 4 5 6 7 8 9 10 11 12 13 14 15 16 17 18 19 20 21 22 23 24 25 26 27 28 29 30 31	February 2012 M T W T F S S 1 2 3 4 5 6 7 8 9 10 11 12 13 14 15 16 17 18 19 20 21 22 23 24 25 26 27 28 29			1 New Year's Day
2 New Year holiday	3 New Year holiday	4	5	6	7	8
9	10	11	12	13	14	15
16 Southland Anniversary	17	18	19	20	21	22
23 Wellington Anniversary	24	25	26	27	28	29



Tiwhanui

Photograph: Hawke's Bay Regional Council

Huitanguru February



Tirohanga mō te whānau kia kite ai ngā ika ki raro
A look out point to guide people fishing below. Tiwhanui is the highest point on the coast and was used by whānau to spot schools of fish below.

Rāhina Monday	Rātū Tuesday	Rāapa Wednesday	Rāpare Thursday	Rāmere Friday	Rāhoroi Saturday	Rātapu Sunday
		1	2	3	4	5
6 Waitangi Day	7	8	9	10	11	12
13	14	15	16	17	18	19
20	21	22	23	24	25	26
27	28	29			MTI hui & Tangoio Marae Trustee / Committee elections 10am at Tangoio	
					January 2012 M T W T F S S 30 31 1 2 3 4 5 6 7 8 9 10 11 12 13 14 15 16 17 18 19 20 21 22 23 24 25 26 27 28 29	March 2012 M T W T F S S 1 2 3 4 5 6 7 8 9 10 11 12 13 14 15 16 17 18 19 20 21 22 23 24 25 26 27 28 29 30 31



Tūtira me Waikopiro (Lakes Tūtira and Waikopiro)
 Photograph: Robin Shirkey

Poutūterangi March



Te waiū o ngā mātua tīpuna
 The sustenance of our ancestors
 Lake Tūtira and its adjacent lakes are an important
 resource gathering area and are abundant with eels

Rāhina Monday	Rātū Tuesday	Rāapa Wednesday	Rāpare Thursday	Rāmere Friday	Rāhoroi Saturday	Rātapu Sunday
February 2012 M T W T F S S 1 2 3 4 5 6 7 8 9 10 11 12 13 14 15 16 17 18 19 20 21 22 23 24 25 26 27 28 29	April 2012 M T W T F S S 30 1 2 3 4 5 6 7 8 9 10 11 12 13 14 15 16 17 18 19 20 21 22 23 24 25 26 27 28 29		1	2	3	4
5	6	7	8	9	10	11
12 Taranaki Anniversary	13	14	15	16	17	18
19	20	21	22	23	24	25
26 Otago Anniversary	27	28	29	30	31 MTI AGM 10am at Tangoio	



Opouahi
Photograph: Robin Shirkey

Paengawhāwhā

April



A spiritual place, and a lake abundant with tuna

Rāhina Monday	Rātū Tuesday	Rāapa Wednesday	Rāpare Thursday	Rāmere Friday	Rāhoroi Saturday	Rātapu Sunday
30	March 2012 M T W T F S S 1 2 3 4 5 6 7 8 9 10 11 12 13 14 15 16 17 18 19 20 21 22 23 24 25 26 27 28 29 30 31	May 2012 M T W T F S S 1 2 3 4 5 6 7 8 9 10 11 12 13 14 15 16 17 18 19 20 21 22 23 24 25 26 27 28 29 30 31				1
2	3	4	5	6 Good Friday	7	8
9 Easter Monday	10	11	12 1st Term ends	13	14	15
16	17	18	19	20	21	22
23 2nd Term begins	24	25 Anzac Day	26	27	28	29



Maungaharuru
 Photograph: Di Lucas, Lucas Associates

Haratua May



View of the profile of Maungaharuru
 from Napier hill at sunset

Rāhina Monday	Rātū Tuesday	Rāapa Wednesday	Rāpare Thursday	Rāmere Friday	Rāhoroi Saturday	Rātapu Sunday																																																																																																		
	1	2	3	4	5	6																																																																																																		
7	8	9	10	11	12	13																																																																																																		
14	15	16	17	18	19	20																																																																																																		
21	22	23	24	25	26	27																																																																																																		
28	29	30	31		<table border="1"> <tr> <th colspan="7">April 2012</th> <th colspan="7">June 2012</th> </tr> <tr> <th>M</th><th>T</th><th>W</th><th>T</th><th>F</th><th>S</th><th>S</th> <th>M</th><th>T</th><th>W</th><th>T</th><th>F</th><th>S</th><th>S</th> </tr> <tr> <td>30</td><td></td><td></td><td></td><td></td><td></td><td>1</td> <td></td><td></td><td></td><td></td><td></td><td>1</td><td>2</td><td>3</td> </tr> <tr> <td>2</td><td>3</td><td>4</td><td>5</td><td>6</td><td>7</td><td>8</td> <td>4</td><td>5</td><td>6</td><td>7</td><td>8</td><td>9</td><td>10</td> </tr> <tr> <td>9</td><td>10</td><td>11</td><td>12</td><td>13</td><td>14</td><td>15</td> <td>11</td><td>12</td><td>13</td><td>14</td><td>15</td><td>16</td><td>17</td> </tr> <tr> <td>16</td><td>17</td><td>18</td><td>19</td><td>20</td><td>21</td><td>22</td> <td>18</td><td>19</td><td>20</td><td>21</td><td>22</td><td>23</td><td>24</td> </tr> <tr> <td>23</td><td>24</td><td>25</td><td>26</td><td>27</td><td>28</td><td>29</td> <td>25</td><td>26</td><td>27</td><td>28</td><td>29</td><td>30</td><td></td> </tr> </table>	April 2012							June 2012							M	T	W	T	F	S	S	M	T	W	T	F	S	S	30						1						1	2	3	2	3	4	5	6	7	8	4	5	6	7	8	9	10	9	10	11	12	13	14	15	11	12	13	14	15	16	17	16	17	18	19	20	21	22	18	19	20	21	22	23	24	23	24	25	26	27	28	29	25	26	27	28	29	30	
April 2012							June 2012																																																																																																	
M	T	W	T	F	S	S	M	T	W	T	F	S	S																																																																																											
30						1						1	2	3																																																																																										
2	3	4	5	6	7	8	4	5	6	7	8	9	10																																																																																											
9	10	11	12	13	14	15	11	12	13	14	15	16	17																																																																																											
16	17	18	19	20	21	22	18	19	20	21	22	23	24																																																																																											
23	24	25	26	27	28	29	25	26	27	28	29	30																																																																																												



Kererū (Native pigeon)
 Photograph: Robin Shirkey

Pipiri June



Kererū were a main source of food for whānau in the winter months.
 At that time the kererū were fat from feasting on miro berries.

Rāhina Monday	Rātū Tuesday	Rāapa Wednesday	Rāpare Thursday	Rāmere Friday	Rāhoroi Saturday	Rātapu Sunday
May 2012 M T W T F S S 1 2 3 4 5 6 7 8 9 10 11 12 13 14 15 16 17 18 19 20 21 22 23 24 25 26 27 28 29 30 31	July 2012 M T W T F S S 30 31 1 2 3 4 5 6 7 8 9 10 11 12 13 14 15 16 17 18 19 20 21 22 23 24 25 26 27 28 29			1	2	3
4 Queen's Birthday	5	6	7	8	9	10
11	12	13	14	15	16	17
18	19	20	21	22	23	24
25	26	27	28	29	30	
				2nd Term ends	MTI & Tangoio Marae hui 10am at Tangoio	



Puawānanga (Native Clematis)
 Photograph: Robin Shirkey

Hōngongoi July



The Puawānanga is the symbol for the aspirations of the hapū. The vines of the puawānanga intertwine, with each single vine being supported by the others and together they are strong. The puawānanga climbs against adversity from the bush floor to the sunlight on the forest canopy. The whareni at Tangoio is also named after the puawānanga.

Rāhina Monday	Rātū Tuesday	Rāapa Wednesday	Rāpare Thursday	Rāmere Friday	Rāhoroi Saturday	Rātapu Sunday
30	31	June 2012 M T W T F S S 1 2 3 4 5 6 7 8 9 10 11 12 13 14 15 16 17 18 19 20 21 22 23 24 25 26 27 28 29 30	August 2012 M T W T F S S 1 2 3 4 5 6 7 8 9 10 11 12 13 14 15 16 17 18 19 20 21 22 23 24 25 26 27 28 29 30 31			1
2	3	4	5	6	7	8
9	10	11	12	13	14	15
16 <small>3rd Term begins</small>	17	18	19	20	21	22
23	24	25	26	27	28	29



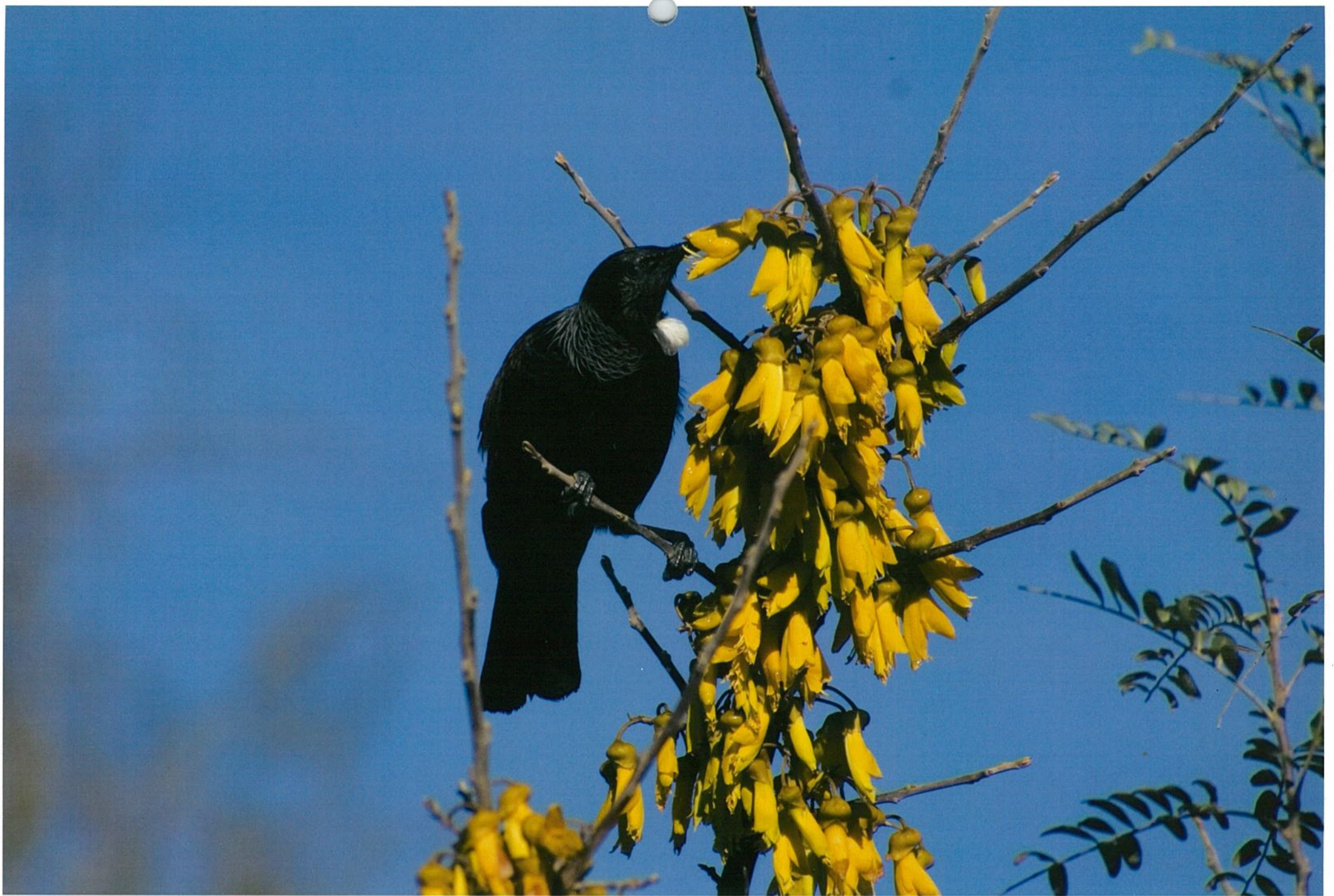
Te Waiohinga (Esk River)
 Photograph: Hawke's Bay Regional Council

Hereturikōkā August



The takiwā (tribal area) of the hapū is generally described as being from the Waikare River in the north, Tangitu (sea) in the east, Waiohinga (Esk) River to Keteketerau, the former outlet of Te Whanganui ā Orotu (Napier inner harbour) in the south, to Maungaharuru in the west

Rāhina Monday	Rātū Tuesday	Rāapa Wednesday	Rāpare Thursday	Rāmere Friday	Rāhoroi Saturday	Rātapu Sunday
		1	2	3	4	5
6	7	8	9	10	11	12
13	14	15	16	17	18	19
20	21	22	23	24	25	26
27	28	29	30	31	July 2012 M T W T F S S 30 31 1 2 3 4 5 6 7 8 9 10 11 12 13 14 15 16 17 18 19 20 21 22 23 24 25 26 27 28 29	September 2012 M T W T F S S 1 2 3 4 5 6 7 8 9 10 11 12 13 14 15 16 17 18 19 20 21 22 23 24 25 26 27 28 29 30



Tui and kōwhai
 Photograph: Robin Shirkey

Mahuru September



Traditionally, the flowering of the kōwhai in spring, was a sign that the time was right to collect kaimoana (seafood)

Rāhina Monday	Rātū Tuesday	Rāapa Wednesday	Rāpare Thursday	Rāmere Friday	Rāhoroi Saturday	Rātapu Sunday
August 2012 M T W T F S S 1 2 3 4 5 6 7 8 9 10 11 12 13 14 15 16 17 18 19 20 21 22 23 24 25 26 27 28 29 30 31	October 2012 M T W T F S S 1 2 3 4 5 6 7 8 9 10 11 12 13 14 15 16 17 18 19 20 21 22 23 24 25 26 27 28 29 30 31				1	2
3	4	5	6	7	8	9
10	11	12	13	14	15	16
17	18	19	20	21	22	23
24 South Canterbury Anniversary	25	26	27	28	29	30
				3rd Term ends	MTI & Tangoio Marae hui 10am at Tangoio	



Waikare
 Photograph: Hawke's Bay Regional Council

Whiringa-ā-nuku October



Pātōtō ki te ata, pātōtō ki te po
 This saying refers to the sound of the sea lapping up against the coastline during the day and night. The Waikare river mouth was known to be a plentiful source of kaimoana (seafood).

Rāhina Monday	Rātū Tuesday	Rāapa Wednesday	Rāpare Thursday	Rāmere Friday	Rāhoroi Saturday	Rātapu Sunday																																																																																																	
1	2	3	4	5	6	7																																																																																																	
8	9	10	11	12	13	14																																																																																																	
15 <small>4th Term begins</small>	16	17	18	19 <small>Hawke's Bay Anniversary</small>	20	21																																																																																																	
22 <small>Labour Day</small>	23	24	25	26	27	28																																																																																																	
29 <small>Marlborough Anniversary</small>	30	31			<table border="1"> <thead> <tr> <th colspan="7">September 2012</th> <th colspan="7">November 2012</th> </tr> <tr> <th>M</th><th>T</th><th>W</th><th>T</th><th>F</th><th>S</th><th>S</th> <th>M</th><th>T</th><th>W</th><th>T</th><th>F</th><th>S</th><th>S</th> </tr> </thead> <tbody> <tr> <td></td><td></td><td></td><td></td><td></td><td>1</td><td>2</td> <td></td><td></td><td></td><td>1</td><td>2</td><td>3</td><td>4</td> </tr> <tr> <td>3</td><td>4</td><td>5</td><td>6</td><td>7</td><td>8</td><td>9</td> <td>5</td><td>6</td><td>7</td><td>8</td><td>9</td><td>10</td><td>11</td> </tr> <tr> <td>10</td><td>11</td><td>12</td><td>13</td><td>14</td><td>15</td><td>16</td> <td>12</td><td>13</td><td>14</td><td>15</td><td>16</td><td>17</td><td>18</td> </tr> <tr> <td>17</td><td>18</td><td>19</td><td>20</td><td>21</td><td>22</td><td>23</td> <td>19</td><td>20</td><td>21</td><td>22</td><td>23</td><td>24</td><td>25</td> </tr> <tr> <td>24</td><td>25</td><td>26</td><td>27</td><td>28</td><td>29</td><td>30</td> <td>26</td><td>27</td><td>28</td><td>29</td><td>30</td><td></td><td></td> </tr> </tbody> </table>	September 2012							November 2012							M	T	W	T	F	S	S	M	T	W	T	F	S	S						1	2				1	2	3	4	3	4	5	6	7	8	9	5	6	7	8	9	10	11	10	11	12	13	14	15	16	12	13	14	15	16	17	18	17	18	19	20	21	22	23	19	20	21	22	23	24	25	24	25	26	27	28	29	30	26	27	28	29	30		
September 2012							November 2012																																																																																																
M	T	W	T	F	S	S	M	T	W	T	F	S	S																																																																																										
					1	2				1	2	3	4																																																																																										
3	4	5	6	7	8	9	5	6	7	8	9	10	11																																																																																										
10	11	12	13	14	15	16	12	13	14	15	16	17	18																																																																																										
17	18	19	20	21	22	23	19	20	21	22	23	24	25																																																																																										
24	25	26	27	28	29	30	26	27	28	29	30																																																																																												



Whakaari
Photograph: Robin Shirkey

Whiringa-ā-rangi November



The pā site, Whakaari (commonly known as Flat Rock) is believed to have been named after the ancestor Whakaari. Whakaari is the founding chief of Ngāti Whakaari, who lived at Petene

Rāhina Monday	Rātū Tuesday	Rāapa Wednesday	Rāpare Thursday	Rāmere Friday	Rāhoroi Saturday	Rātapu Sunday																																																																																				
			1	2	3	4																																																																																				
5	6	7	8	9	10	11																																																																																				
12	13	14	15	16 Canterbury Anniversary	17	18																																																																																				
19	20	21	22	23	24 MTI & Tangoio Marae hui 10am at Tangoio	25																																																																																				
26	27	28	29	30	<p>October 2012</p> <table border="1"> <tr><td>M</td><td>T</td><td>W</td><td>T</td><td>F</td><td>S</td><td>S</td></tr> <tr><td>1</td><td>2</td><td>3</td><td>4</td><td>5</td><td>6</td><td>7</td></tr> <tr><td>8</td><td>9</td><td>10</td><td>11</td><td>12</td><td>13</td><td>14</td></tr> <tr><td>15</td><td>16</td><td>17</td><td>18</td><td>19</td><td>20</td><td>21</td></tr> <tr><td>22</td><td>23</td><td>24</td><td>25</td><td>26</td><td>27</td><td>28</td></tr> <tr><td>29</td><td>30</td><td>31</td><td></td><td></td><td></td><td></td></tr> </table>	M	T	W	T	F	S	S	1	2	3	4	5	6	7	8	9	10	11	12	13	14	15	16	17	18	19	20	21	22	23	24	25	26	27	28	29	30	31					<p>December 2012</p> <table border="1"> <tr><td>M</td><td>T</td><td>W</td><td>T</td><td>F</td><td>S</td><td>S</td></tr> <tr><td></td><td></td><td></td><td></td><td></td><td></td><td>1 2</td></tr> <tr><td>3</td><td>4</td><td>5</td><td>6</td><td>7</td><td>8</td><td>9</td></tr> <tr><td>10</td><td>11</td><td>12</td><td>13</td><td>14</td><td>15</td><td>16</td></tr> <tr><td>17</td><td>18</td><td>19</td><td>20</td><td>21</td><td>22</td><td>23</td></tr> <tr><td>24</td><td>25</td><td>26</td><td>27</td><td>28</td><td>29</td><td>30</td></tr> </table>	M	T	W	T	F	S	S							1 2	3	4	5	6	7	8	9	10	11	12	13	14	15	16	17	18	19	20	21	22	23	24	25	26	27	28	29	30
M	T	W	T	F	S	S																																																																																				
1	2	3	4	5	6	7																																																																																				
8	9	10	11	12	13	14																																																																																				
15	16	17	18	19	20	21																																																																																				
22	23	24	25	26	27	28																																																																																				
29	30	31																																																																																								
M	T	W	T	F	S	S																																																																																				
						1 2																																																																																				
3	4	5	6	7	8	9																																																																																				
10	11	12	13	14	15	16																																																																																				
17	18	19	20	21	22	23																																																																																				
24	25	26	27	28	29	30																																																																																				



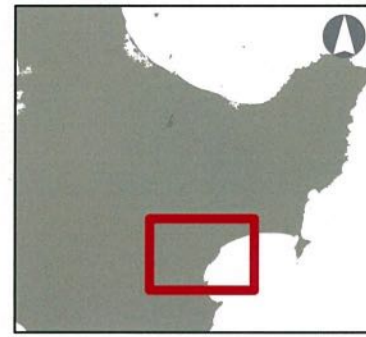
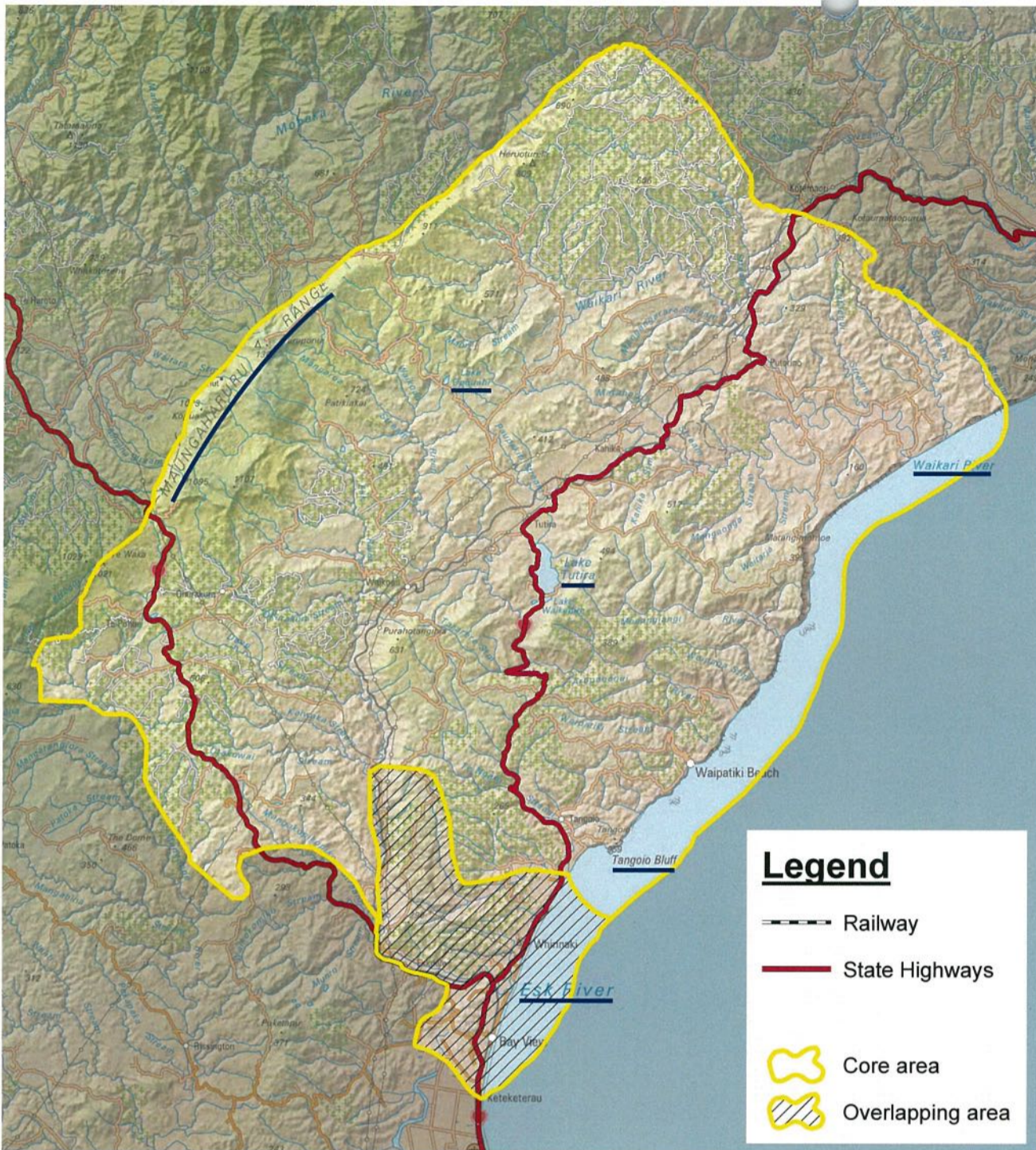
Tangoio beach and Tangitu
Photograph: Robin Shirkey

Hakihea December



Tangitu is a female kaitiaki (guardian) of the region. There was a woman named Tangitu who was regarded as an exceptional diver. One day she dove under the sea and never returned. Some time later, a solitary whale appeared and whānau realised - this whale was Tangitu. Ever since then, the moana has been known as Tangitu

Rāhina Monday	Rātū Tuesday	Rāapa Wednesday	Rāpare Thursday	Rāmere Friday	Rāhoroi Saturday	Rātapu Sunday
31	November 2012 M T W T F S S 1 2 3 4 5 6 7 8 9 10 11 12 13 14 15 16 17 18 19 20 21 22 23 24 25 26 27 28 29 30	January 2013 M T W T F S S 1 2 3 4 5 6 7 8 9 10 11 12 13 14 15 16 17 18 19 20 21 22 23 24 25 26 27 28 29 30 31			1	2
3 Chatham Islands, Westland Anniversaries	4	5	6	7	8	9
10	11	12	13	14 4th Term ends (Secondary)	15	16
17	18	19	20 4th Term ends (Primary/Intermediate)	21	22	23
24	25 Christmas Day	26 Boxing Day	27	28	29	30



Te takiwā o ngā hapū

The area of the hapū of Maungaharuru Tangitu for the purposes of Treaty Settlement negotiations with the Crown

Kia haruru a Maungaharuru
Waiata by Justin Puna

Kia haruru a Maungaharuru
 Me tūtira te puninga
 Kurumōkihi, Ngāi Tatara e, Marangatūhetaua, Ngāi Te Ruruku ki Tangoio
 Nika rā ngā Hapū e
 Papaki kau ana ngā tai o Tangoio, Tangitū, Waipātiki, Arapawanui
 Waiohinganga, Te Ngarue me Waikare ō tātau waiū e
 Pōkarekare ana ngā roto Orakai, Opouahi, Waikopiro, Tūtira, Te Pohue
 Punanga te Wao hai pātaka kōrero mō āna whakahina e
 Kia tairanga ngā mahi ki ngā pānga whenua, me ngā waiū hoki
 kia toitū te mana o Te Ao Tūroa
 kia pūmau ai te wahanga mō ngā ino
 Kia haruru a Maungaharuru
 Me tūtira te puninga

Let the great mountain Haruru reverberate.
 Resolute the family will be
 Kurumōkihi, Ngāi Tatara, Marangatūhetaua, Ngāi Te Ruruku of Tangoio,
 these are the sub-tribes
 Breaking are the tides of Tangoio, Tangitu, Waipātiki, Arapawanui against
 the cliffs
 Our tributaries of vitality are Waiohinganga, Te Ngarue and Waikare
 The lakes of Orakai, Opouahi, Waikopiro, Tūtira, Te Pohue ripple
 Punanga te Wao is the house of knowledge for its descendants
 Multiple layers of work are required for us to keep our land and our life
 providing waters immaculate so that
 the mana of the land of this world remains, thus our land, and waters can
 be held onto unwaveringly for
 our descendants
 Let the great mountain Haruru reverberate
 Resolute the family will be.