

Hawke's Bay Recovery

Building back better, safer and smarter.

- Genuine partnership with Māori • Addressing inequalities • Stronger productive economy •
- Fit-for-purpose infrastructure and life-lines • Climate resilience and adaptation •
- Working with Te Taiao, not against •

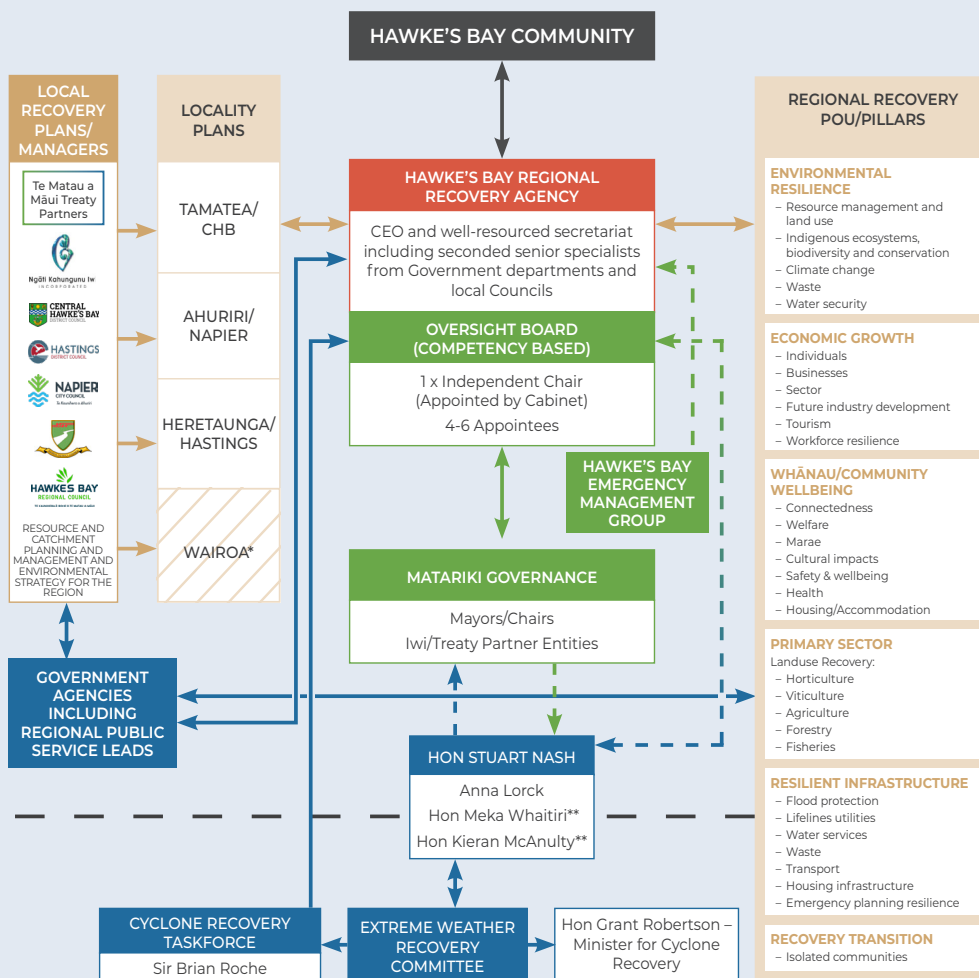
Te Matau a Māui Hawke's Bay faces unimaginable devastation and loss from Cyclone Gabrielle. In our lifetimes, most of us have never experienced a disaster of this scale, with this much impact on our lives, livelihoods, whānau, homes, farms, orchards, vineyards, neighbourhoods and communities. Many of our hardest hit communities are those who were fragile before this event.

Recovering will involve all of us, together; and is a once-in-a-lifetime opportunity to build Te Matau a Māui Hawke's Bay back better, safer and smarter.

A Hawke's Bay where everyone, everywhere, shares in the prosperity we know we can achieve. One where every household and every whānau are able to thrive. One where our taiao, our industries and businesses again flourish and where we are more resilient to climate change.

Together, Te Matau a Māui Hawke's Bay Councils, Iwi leaders and Government have agreed a framework for co-ordinating our region's recovery.

The Regional Recovery Framework



KEY:

Blue: Government Green: Regional Governance Red: Co-ordination and management Brown: Planning, task groups and implementation

* Due to Wairoa's physical isolation from the Hawke's Bay Region, the first steps of recovery will need to be supported by Tairāwhiti until State Highway 2 is reconnected.

** Also sit on Extreme Weather Recovery Cabinet Committee Short term recovery with Tairāwhiti

Key features of the recovery framework

- Matariki is the inclusive Hawke's Bay Regional Development Forum, led by Mana Whenua and Council leaders that will provide regional governance for the recovery.
- There will be an Oversight Board, made up of six locally appointed Directors and an independent Chair, appointed by Government. The board will be accountable to Matariki Governance.
- The Board will be responsible for the oversight of:
 - Building the Regional Recovery Plan.
 - Prioritising and sequencing the delivery of the regional activities needed at scale.
 - Negotiating with Government on issues of funding, legislation and other regulatory powers that may be needed.
 - Providing assurance to regional leaders and Government recovery progress.

Regional Recovery Agency

A new regional recovery agency will:

- ✓ Coordinate resources and planning for the region.
- ✓ Explore innovative regional delivery mechanisms.
- ✓ Work with local and regional agencies and councils on efficient planning and delivery.

Interim Regional Recovery Manager

Keriana Brooking has been appointed the Interim Recovery Manager for Te Matau a Māui Hawke's Bay. Her task is to swiftly bring together the functions and capabilities essential to coordinating and planning the region's recovery.

Her immediate focus is on supporting the transition of the emergency response to date, into a short and long-term approach to recovery for our region and establishing the regional recovery agency to support the critical work required.

What does 'Locally led' recovery mean?

A locally led, regionally enabled recovery means the needs and priorities of local communities will be reflected in the region's recovery plan through locality plans developed for each local council area.

Government, iwi/mana whenua, local councils, the regional council, business and sector groups and place-based communities will work in partnership to develop the plans.



How will the recovery be funded?

Local Leaders are working with Government on funding arrangements for the Hawke's Bay Regional Recovery Agency. It is expected that local and central government support and funding will also be provided for the recovery, by reprioritising some activities or projects that were planned before the cyclone.

What happens next?

1. Government will appoint an experienced and capable Independent Chair of the Oversight Board.
2. Up to six Directors will be appointed to the Oversight Board by Matariki Governance.
3. The Recovery Agency will be established before the end of March.
4. A Chief Executive will be appointed to lead the Regional Recovery and Regional Recovery Agency.

Where can people access information about the Regional Recovery?

A website, www.hbrecovery.nz has been set up, with information being added as it becomes available.

Frequently Asked Questions

Q Who makes up the Hawke's Bay Emergency Management Group?

The Mayors of Central Hawke's Bay, Hastings, Napier, and Wairoa and the Chair of the Hawke's Bay Regional Council form the CDEM Joint Committee. This form of the group is set by the Civil Defence Emergency Management Act 2002.

Q What is the role of Matariki?

Matariki is the inclusive Hawke's Bay Regional Development Forum, led by Mana Whenua and Council leaders that will provide regional governance for the recovery.

For more information: <https://www.hbreds.nz/>

Q Who makes up the Matariki Governance Group?

Bayden Barber Chairperson Ngāti Kahungunu Iwi Inc	Tania Eden Chairperson Mana Ahuriri Trust	Liz Graham Board Member Heretaunga Tamatea Settlement Trust	Mana Hazel Co-Chairperson Ngāti Hineuru
Sandra Hazlehurst Mayor Hastings District Council	Tania Hopmans Toihau Chair Maungaharuru-Tangitū Trust	Liz Hunt Co-Chairperson Ngāti Hineuru	Craig Little Mayor Wairoa District Council
Hinewai Ormsby Chairperson Hawke's Bay Regional Council	Leon Symes Chairperson Tātau Tātau o Te Wairoa	Toro Waaka Chairperson Ngāti Pāhauwera Development Trust	Alex Walker Mayor Central Hawke's Bay District Council
Kirsten Wise Mayor Napier City Council			

Q Who will select the Directors of the Recovery Agency Oversight Board and what skills will Directors need?

A collaborative process between Matariki Co-chairs and Government is underway to appoint the Chair and Directors of the Recovery Agency Oversight Board. It will be a competency-based board, with people appointed based on their specific skills and experience for the recovery (e.g. infrastructure, governance & business, and so forth).

The Board is expected to be appointed by the end of March.

Q How long will the Interim Recovery Manager be in place?

The joint committee has appointed the Interim Recovery Manager for an initial 28 days which may be renewed before the end of that period.

Q Who will appoint the CEO of the Recovery Agency?

The appointment will be made by the Recovery Agency Oversight Board.

Q Who will lead each of the Regional Recovery Pou?

Interim pou leaders are being identified by the Interim Regional Recovery Manager.

The Recovery pou align with many of the existing Matariki pou, which means some will be led by existing pou leaders. Others will be determined through natural alignment; for example, the new REDA (Regional Economic Development Agency) is likely to lead the Economic Growth pou.

Q How will the Regional Recovery Agency be funded?

Local Leaders are working with Government on funding arrangements for the Hawke's Bay Regional Recovery Agency. It is expected that local and central government support and funding will also be provided for the recovery, by reprioritising some activities or projects that were planned before the cyclone.

Q Will the Recovery Agency be responsible for delivering the recovery?

No, the Recovery Agency coordinates the recovery planning and resources, and will explore innovative ways for the recovery activities to be delivered. The Agency will then work with local and regional agencies and councils on efficient planning and delivery. The Regional Recovery Agency Oversight Board will provide assurance to local and central government that progress is being made.

Q If the Recovery Agency is responsible for pulling together the Recovery Programme Action Plan, what are Local Councils responsible for?

Local Councils will continue to be responsible for the services they currently provide, including those elements of the cyclone response they are already delivering such as flood-related waste collection, and so forth.

For the recovery, Councils will be the interface with communities, with co-ordination between local Councils and the Regional Recover Agency on elements where there is a whole-of-region approach is needed (e.g., for resilient lifeline utilities).

Councils will be responsible for engaging and partnering with their communities – mana whenua, business and industry sectors, and communities of place – to identify their short- and long-term recovery needs and opportunities. Councils will then reflect that work in the locality plans they develop, which in turn will feed into the region's recovery programme.

Councils will be responsible for leading the delivery of their locality plans.

Q How will the recovery be funded?

Funding requirements will be identified in the process of developing the recovery programme. It will then be up to the Regional Recovery Agency to negotiate with Government on issues of funding, legislation and other regulatory powers that will be needed to deliver the recovery programme; with assurance provided by the Recovery Agency Oversight Board.

Local and Central Government and other agencies will also need to reprioritise some of their existing work and projects over the long term, to focus on the new priorities identified in the recovery.