



MAUNGAHARURU  
TANGITŪ

# Tukutuku

Maramataka

Pipiri 2023 – Haratua 2024





# Tuitui Tukutuku

The official opening of our Whare Tipuna, Punanga Te Wao, was held on 16 March 1991. Many people worked for years leading up to this. There were two crews as part of the 'PEP' (Project Employment Programmes), including our whānau and people from other hapū. Henare Ratima led the labourers, while Lizzy Taurima led the tukutuku weavers. Some of them are shown in this photo.

Kuia Ora Rongo (Ngāti Porou, sister-in-law of Rangitere 'Big Nan' Taurima) learned the art of weaving tukutuku from Sir Āpirana Ngata. Aunty Ora taught Aunty Lizzy, who shared the mātauranga with Aunty Doreen Neera and others. There was only one tāne in the weaving crew, Dougie, who is pictured at work to the left. The other photo shows Faye Taylor standing in front of the panels and another wahine who is softening the kiekie with warm water.



Two types of plants were used. Kiekie (shown hanging to dry) was used white and dyed black. It was harvested from ngahere within our takiwā. Pīngao is naturally golden-yellow (shown hanging in the top photo). It was harvested from Whangaehu (near Whanganui), Hokio (near Ngātokowaru Marae) and other beaches.

Aunty Lizzy and Aunty Doreen speak of the love put into the tukutuku, "we gave it our heart and soul".





# Tiakina Tukutuku

Sabre (Thursday) Puna is leading a team caring for our tukutuku after the impacts of Cyclone Gabrielle. Thursday, Poppy Taylor, Elaine Cook, Jessica McGregor and Koutu Taylor all hold mātauranga and are skilled at tukutuku. Thursday's daughter Natasha and Jessica's daughter Amber are learning alongside them.

Pictured to the left are: Koutu Taylor, Amber Green, Jessica McGregor, Nesi Taurima-Nuku, Natasha Takie, Poppy Taylor and Cheree Macrae.

The photo below shows Poppy, Thursday and Jessica at work, delicately brushing the tukutuku.

Thursday explains "the overall purpose of rōpū tukutuku is to save our taonga by cleaning as much of the silt, contamination and mould as possible without compromising the structure of the tukutuku, the paint on the panels and the fragility of the fibres."

Fortunately, the weaving of the tukutuku was so well done, with secure knots at the back, that they have survived the flood better than expected. Aunty Doreen recalls "[we were] staunch to make it perfect" and Aunty Lizzy made sure the back was tidy with all the ends going the same way. We now have the rare opportunity to admire their skill from both sides of the tukutuku, as shown in the photo to the left.





*Ānō me he whare  
pūngāwerewere*





# Pipiri

## June 2023

### “As though it were a spiderweb”

This whakataukī is a compliment for a fine piece of work such as weaving or carving. We admire the beautiful tukutuku that were created over six years in the 1980s. This photo shows the completed tukutuku on the mahau of our whare tipuna, waiting to be installed inside.

Rāhina Monday	Rātū Tuesday	Rāapa Wednesday	Rāpare Thursday	Rāmere Friday	Rāhoroi Saturday	Rātapu Sunday
			1  <i>Tirama Matariki, Wairarapa</i> <i>See <a href="http://www.matariki.events">www.matariki.events</a></i>	2	3	4 <i>Rākaunui</i> ☉
5  <i>King's Birthday</i>	6	7	8	9	10	11  <i>Hui ā-Hapū</i> <i>12:30pm Lunch</i> <i>1:30 - 3pm Hui</i> <i>East Pier, Ahuriri</i>
12	13	14	15  <i>Matariki visible rising from</i> <i>Hawke's Bay horizon</i>	16	17	18 <i>Whiro</i> ●
19  <i>Matariki School &amp; Community week</i> <i>See <a href="http://www.atea.nz">www.atea.nz</a> for details</i>	20	21	22	23  <i>Matariki Hautapu</i> <i>Te Takanga o te Rā o Takurua</i> <i>See <a href="http://www.atea.nz">www.atea.nz</a> for details</i>	24	25
26	27	28	29	30  <i>Matariki Whakanuia ki</i> <i>Te Wairoa</i> <i>See <a href="http://www.matariki.events">www.matariki.events</a></i> <i>Term 2 ends</i>	<b>Haratua 2023</b> M T W T F S S 1 2 3 4 5 6 7 8 9 10 11 12 13 14 15 16 17 18 19 20 21 22 23 24 25 26 27 28 29 30 31	
					<b>Hōngongoi 2023</b> M T W T F S S 31                    1 2 3 4 5 6 7 8 9 10 11 12 13 14 15 16 17 18 19 20 21 22 23 24 25 26 27 28 29 30	









# Hōngongoi

## July 2023

### Purapura Whetū

This tukutuku is on the top part of the apai of our whare tipuna, Punanga Te Wao. Purapura Whetū symbolises the stars that our tipuna used to navigate to Aotearoa across Te Moana-nui-a-Kiwa. It also represents us, the many uri of our tipuna, and therefore our whakapapa.

Rāhina  
Monday

Rātū  
Tuesday

Rāapa  
Wednesday

Rāpare  
Thursday

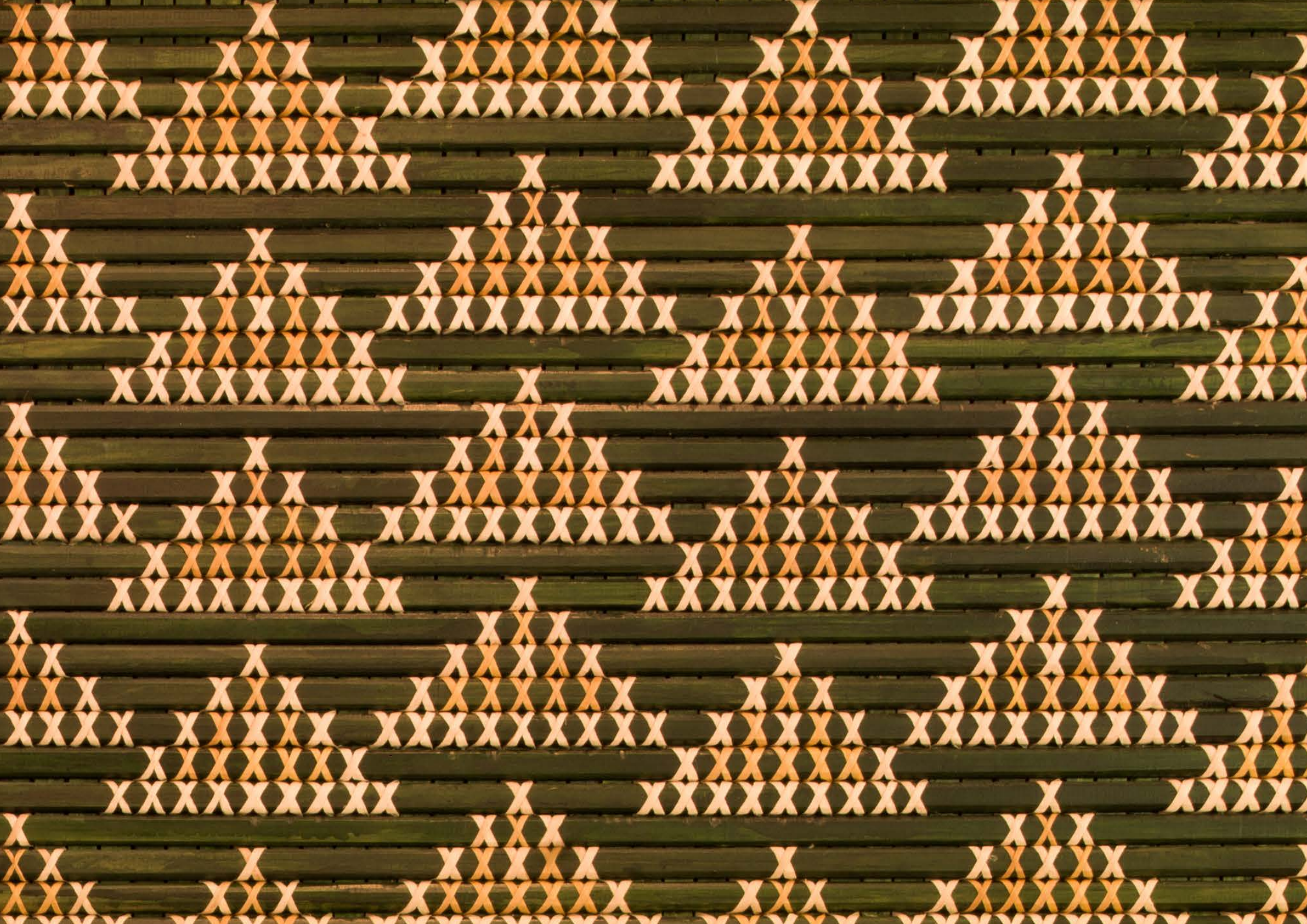
Rāmere  
Friday

Rāhoroi  
Saturday

Rātapu  
Sunday

31	<b>Pipiri 2023</b> M T W T F S S 1 2 3 4 5 6 7 8 9 10 11 12 13 14 15 16 17 18 19 20 21 22 23 24 25 26 27 28 29 30	<b>Hereturikōkā 2023</b> M T W T F S S 1 2 3 4 5 6 7 8 9 10 11 12 13 14 15 16 17 18 19 20 21 22 23 24 25 26 27 28 29 30 31			1	2
3 <i>Rākaunui</i> ○	4	5	6 <i>Matariki Tāpuapua Flaxmere Park See www.matariki.events</i>	7 <i>Matariki Whakanuia ki Tamatea, Waipukurau See www.matariki.events</i>	8	9
10 ●	11	12	13 <i>Whāngai i te Hautapu Matariki Pūrākau, Napier See www.matariki.events</i>	14 <i>Matariki Holiday Kaumātua Matariki Lunch 11am, RSA Napier Hākari Matariki, Hastings See www.matariki.events</i>	15 <i>Matariki Pūrākau Ngā Pou o Heretaunga See www.matariki.events</i>	16
17 <i>Term 3 starts</i>	18 <i>Whiro</i> ●	19	20	21	22	23
24	25	26 ●	27	28 <i>Matariki Whakanuia ki Tāmaki-nui-a-Rua Dannevirke See www.matariki.events</i>	29	30









# Hereturikōkā

## August 2023

### Nihoniho

This tukutuku is on the lower part of the apai of Punanga Te Wao. Nihoniho is a very tapu pattern. It is located next to where the rangatira sit inside, at the front of the whare tipuna – tangata whenua at the tara iti, manuhiri at the tara nui. The nihoniho pattern originates from Waikato Tainui.

Rāhina  
Monday

Rātū  
Tuesday

Rāapa  
Wednesday

Rāpare  
Thursday

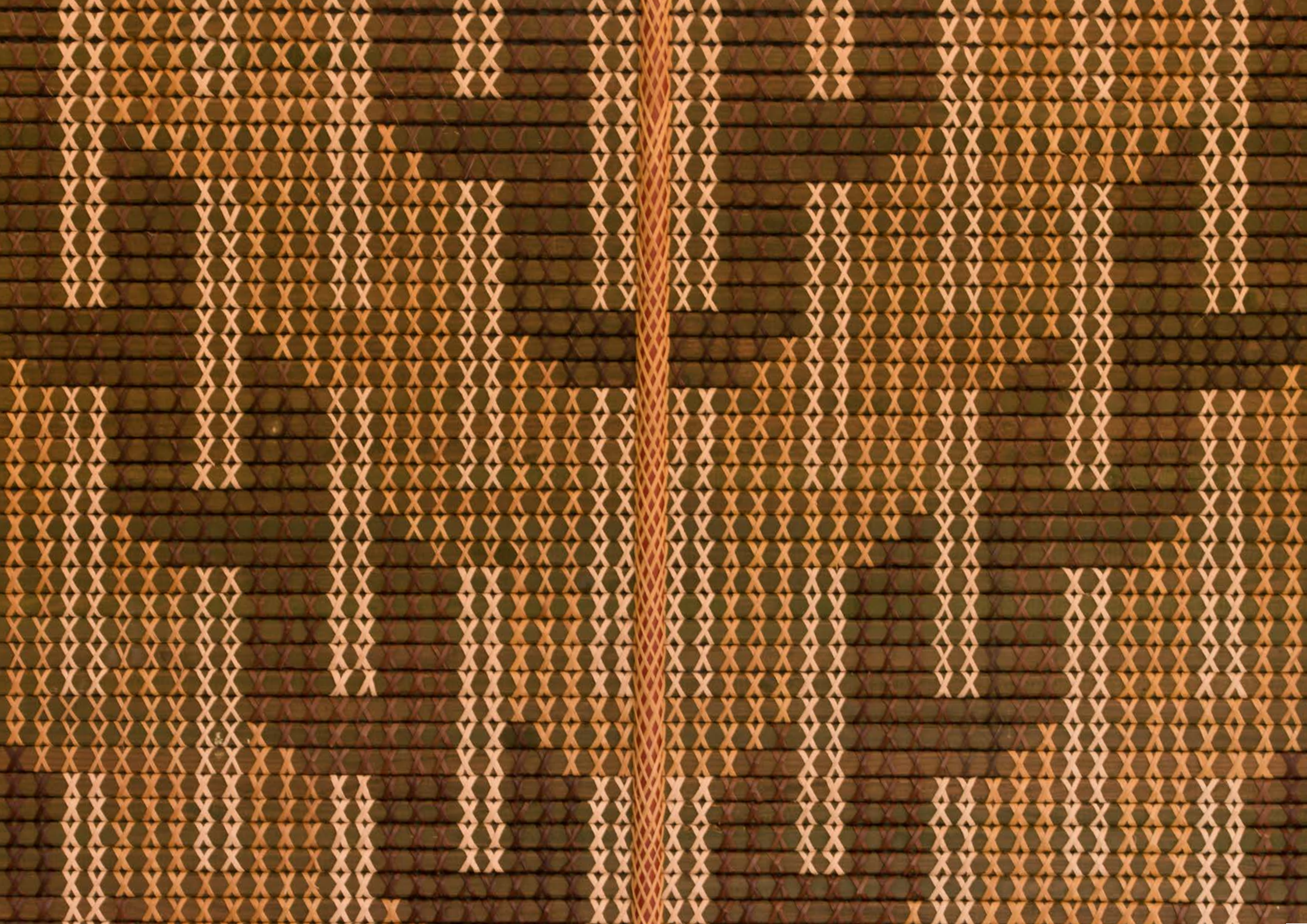
Rāmere  
Friday

Rāhoroi  
Saturday

Rātapu  
Sunday

	1	2 <i>Rākaunui</i> ○	3	4	5	6
7	8 ●	9	10 <i>Te Reo ki Tua HB Showgrounds www.kahungunu.iwi.nz</i>	11	12	13
14	15	16 <i>Whiro</i> ●	17	18	19	20
21	22	23	24 ●	25	26	27
28	29	30	31 <i>Rākaunui</i> ○		<b>Hōngongoi 2023</b> M T W T F S S 31                    1 2 3 4 5 6 7 8 9 10 11 12 13 14 15 16 17 18 19 20 21 22 23 24 25 26 27 28 29 30	
					<b>Mahuru 2023</b> M T W T F S S 1 2 3 4 5 6 7 8 9 10 11 12 13 14 15 16 17 18 19 20 21 22 23 24 25 26 27 28 29 30	

















# Whiringa ā-nuku

October 2023

## Roimata Toroa

Literally meaning 'Tears of the Albatross', this is a grieving pattern. It comes from kōrero about how kūmara was brought to Aotearoa on two sacred toroa. One of the toroa was mistreated and died, and the other cried for its partner. Our whanaunga Hirini Melbourne composed a beautiful waiata about this kōrero, Roimata Toroa.

Rāhina  
Monday

Rātū  
Tuesday

Rāapa  
Wednesday

Rāpare  
Thursday

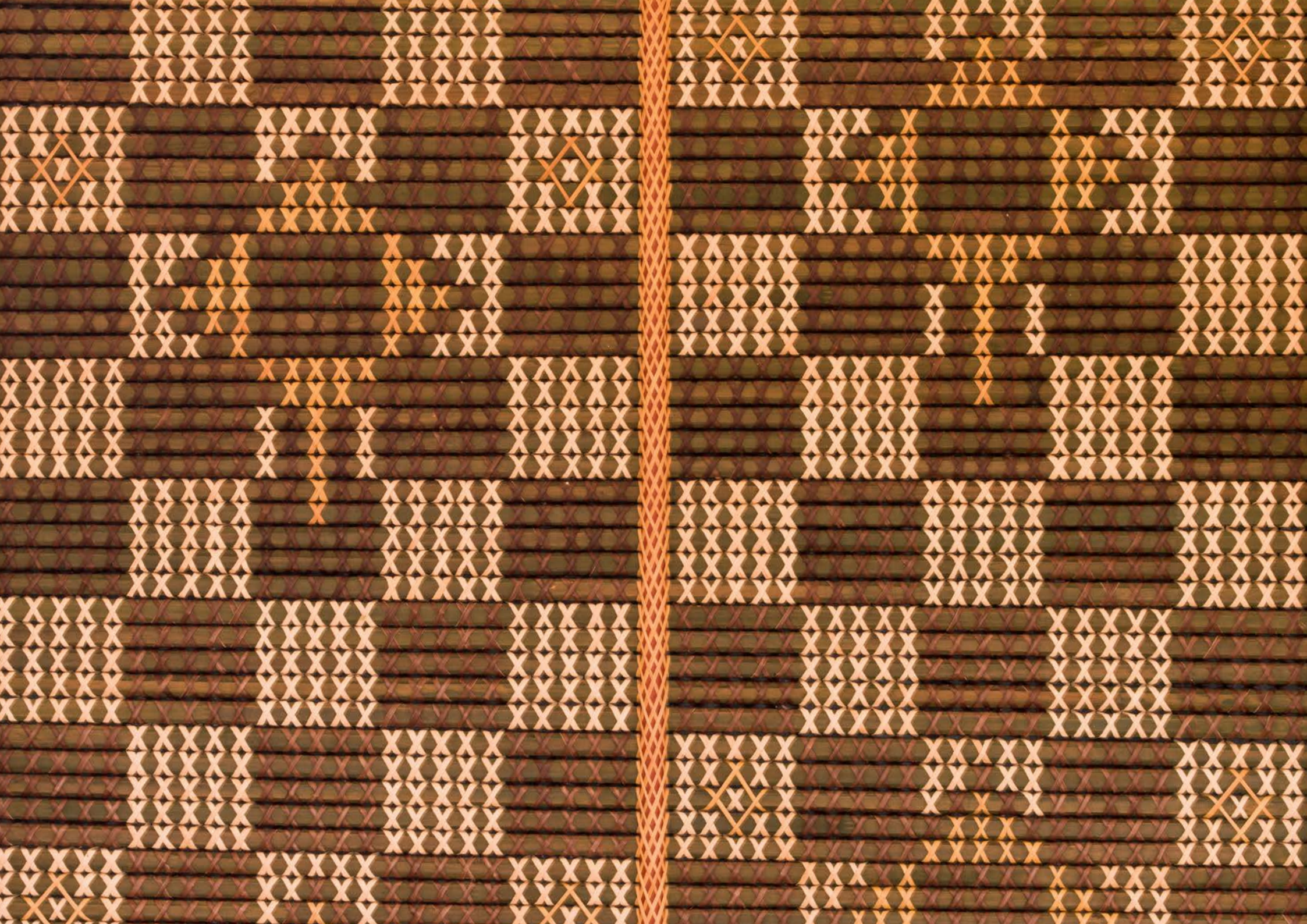
Rāmere  
Friday

Rāhoroi  
Saturday

Rātapu  
Sunday

30  Marlborough Anniversary Day	31	<b>Mahuru 2023</b> M T W T F S S  4 5 6 7 8 9 10 11 12 13 14 15 16 17 18 19 20 21 22 23 24 25 26 27 28 29 30	<b>Whiringa ā-rangi 2023</b> M T W T F S S  1 2 3 4 5 6 7 8 9 10 11 12 13 14 15 16 17 18 19 20 21 22 23 24 25 26 27 28 29 30			1  Te Kura Reo o Ngāti Kahungunu <a href="http://www.kahungunu.iwi.nz">www.kahungunu.iwi.nz</a>
2	3	4	5	6	7	8
9  Term 4 starts	10	11	12	13	14	15 <i>Whiro</i>
16	17	18	19	20  Hawke's Bay Anniversary Day	21	22
23  Labour Day	24	25	26	27	28	29 <i>Rākaunui</i>









# Whiringa ā-rangi

November 2023

## Mumuhau

The checkered pattern relates to kōrero of two wise sacred tieke that guided the waka Mataatua. Mumuhau was the name of the female bird.

## Papaki Rango

This pattern is based on the traditional fly swat used to keep flies away from tūpāpaku. It denotes death but can also be interpreted as warding off harm.

Rāhina  
Monday

Rātū  
Tuesday

Rāapa  
Wednesday

Rāpare  
Thursday

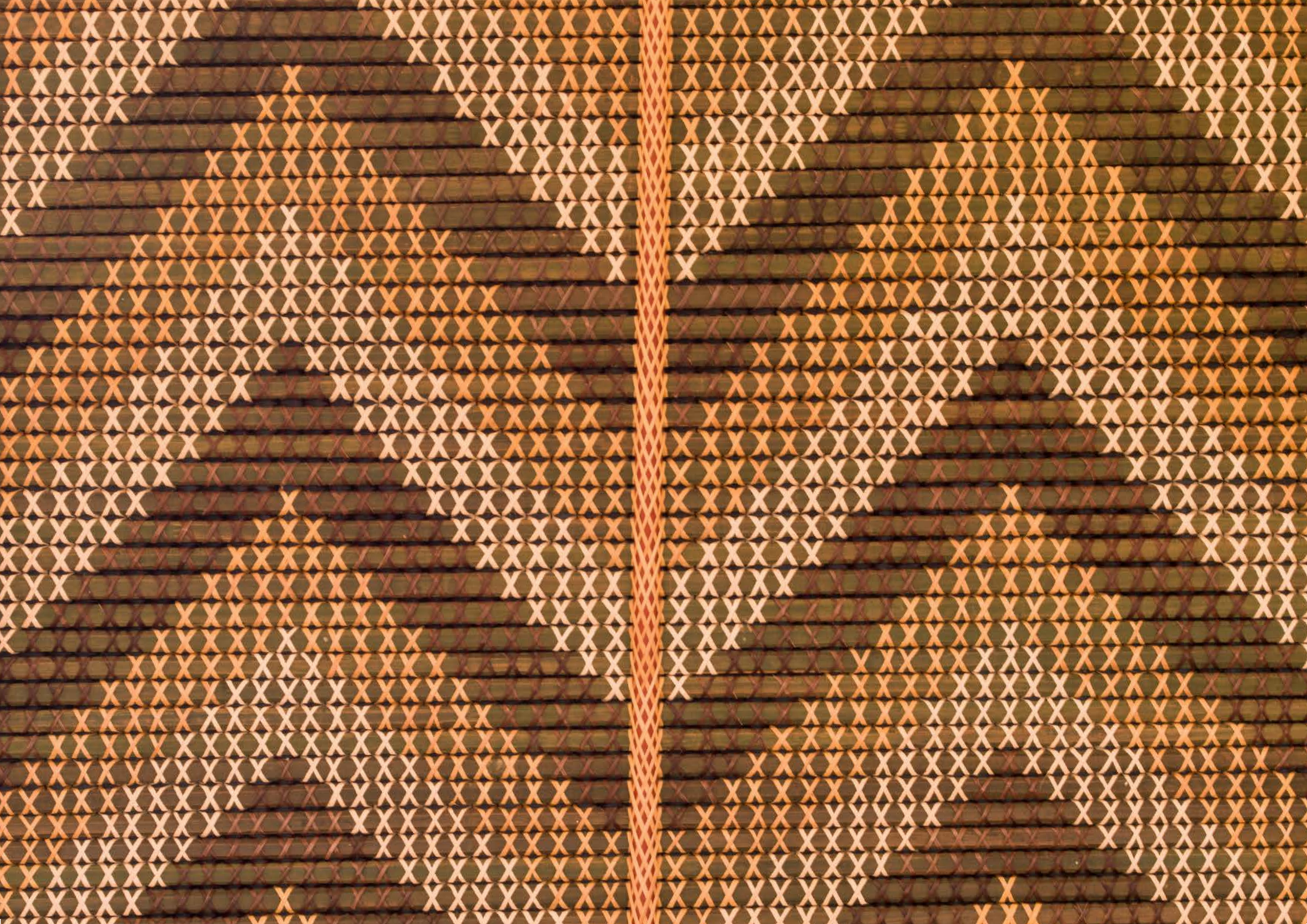
Rāmere  
Friday

Rāhoroi  
Saturday

Rātapu  
Sunday

		1	2	3	4	5 
6	7	8	9	10	11	12
13 <i>Whiro</i> 	14	15	16	17 <i>Canterbury Anniversary Day</i>	18	19
20 	21	22	23	24	25 <i>Ngāti Kahungunu Iwi Inc Hui ā-Tau (AGM) &amp; Pā Sports Day</i>	26
27 <i>Rākaunui</i>  <i>Mokotini Kōhanga Reo Kapa Haka Festival Chatham Islands Anniversary Day</i>	28	29	30		<b>Whiringa ā-nuku 2023</b> M T W T F S S 30 31 1 2 3 4 5 6 7 8 9 10 11 12 13 14 15 16 17 18 19 20 21 22 23 24 25 26 27 28 29	<b>Hakihea 2023</b> M T W T F S S 1 2 3 4 5 6 7 8 9 10 11 12 13 14 15 16 17 18 19 20 21 22 23 24 25 26 27 28 29 30 31









# Hakihea

## December 2023

**Kaokao**

*This pattern represents the shape of a warrior holding up a weapon, exposing the armpit and side of the tinana. Kaokao therefore symbolises strength and that you “mean business”. For our tīpuna, that was important in defending our land.*

**Rāhina**  
Monday

**Rātū**  
Tuesday





**Rāapa**  
Wednesday

**Rāpare**  
Thursday

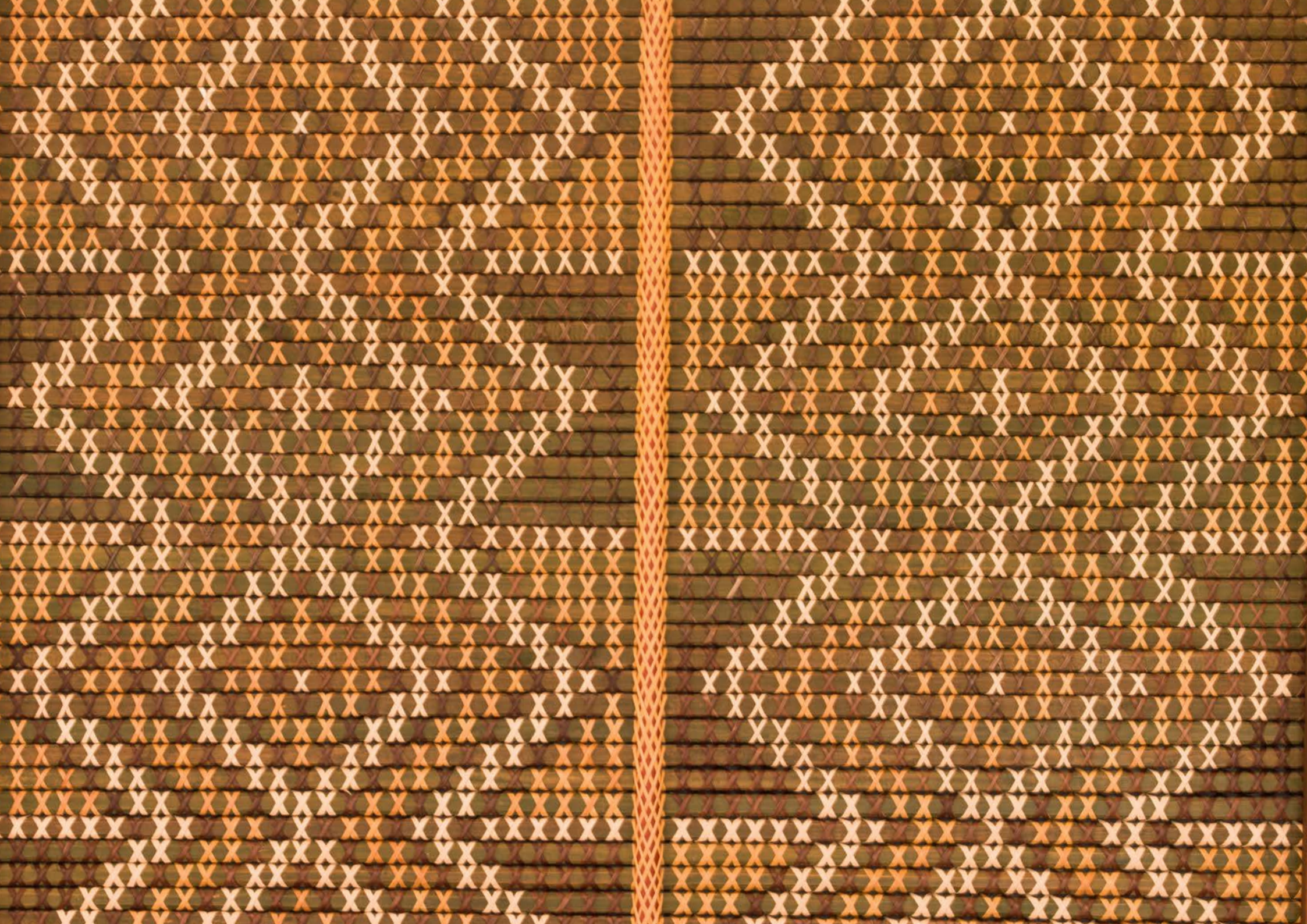
**Rāmere**  
Friday

**Rāhoroi**  
Saturday

**Rātapu**  
Sunday

Whiringa ā-rangi 2023	Kohitātea 2024					
M T W T F S S	M T W T F S S					
1 2 3 4 5	1 2 3 4 5 6 7			1	2	3
6 7 8 9 10 11 12	8 9 10 11 12 13 14			<i>Kāhui Kaumātua</i>		
13 14 15 16 17 18 19	15 16 17 18 19 20 21			<i>Xmas Dinner</i>		
20 21 22 23 24 25 26	22 23 24 25 26 27 28					
27 28 29 30	29 30 31					
4	5 	6	7	8	9	10
<i>Westland Anniversary Day</i>						
11	12	13 <i>Whiro</i> 	14	15	16	17
18	19	20 	21	22	23	24
		<i>Term 4 ends (at the latest)</i>	<i>Te Takanga o te Rā o Raumati</i> <i>Summer Solstice</i> <i>See <a href="http://www.atea.nz">www.atea.nz</a> for details</i>			<i>Christmas Eve</i>
25	26	27 <i>Rākaunui</i> 	28	29	30	31
<i>Christmas Day</i>	<i>Boxing Day</i>					<i>New Year's Eve</i>









# Kohitātea

## January 2024

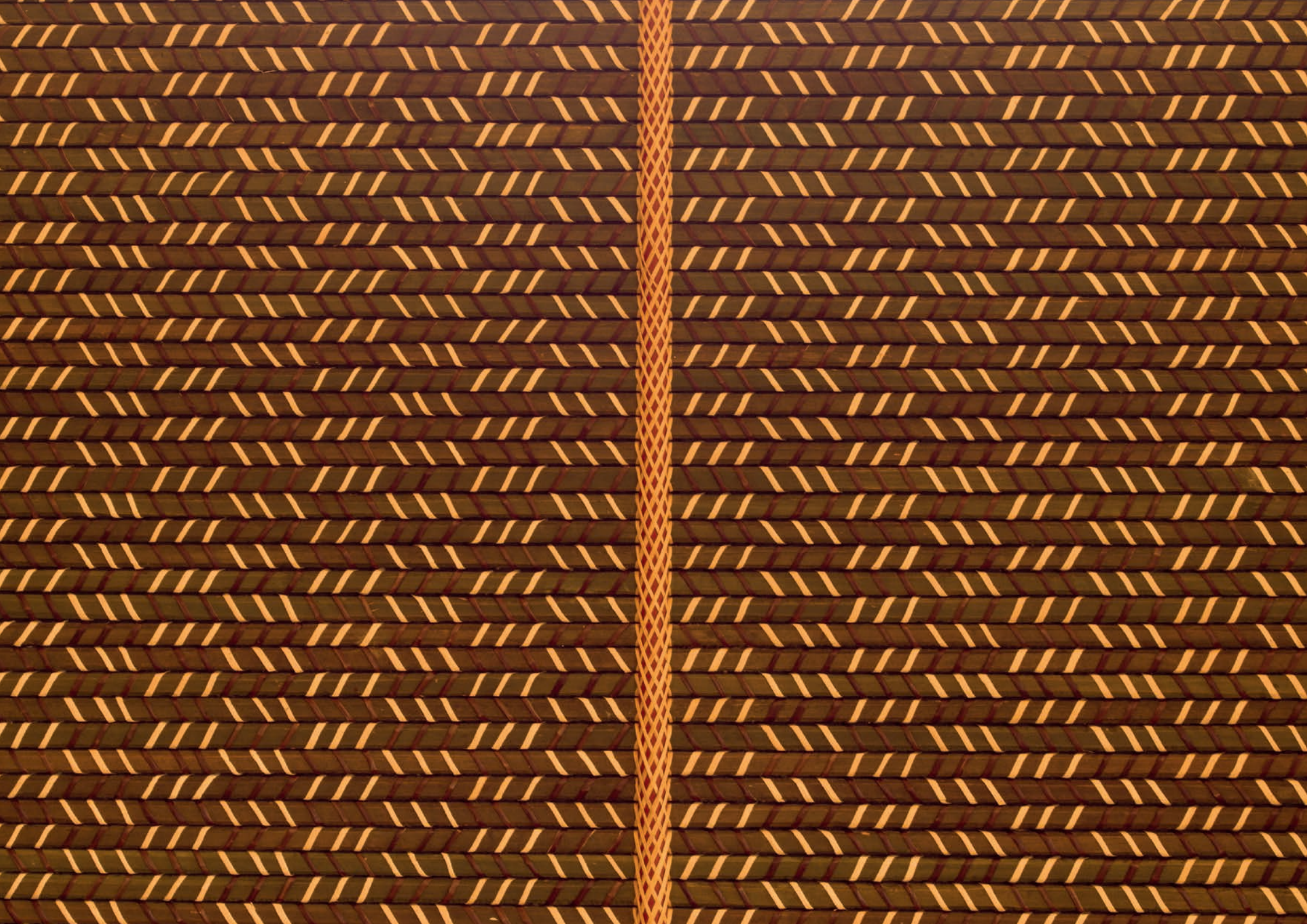
### Pātikitiki

*This diamond pattern represents the pātiki and symbolises kai and abundance. There were many pātiki in our streams and before the 1931 earthquake, in the large lagoon in Tangoio. The pātiki was food for our people and formed an important part of our hapū economy.*

**Rāhina** Monday      **Rātū** Tuesday      **Rāapa** Wednesday      **Rāpare** Thursday      **Rāmere** Friday      **Rāhoroi** Saturday      **Rātapu** Sunday

1 <i>New Year's Day</i>	2 <i>Day after New Year's Day</i>	3	4	5 ☉	6	7																																																																																																		
8	9	10	11	12 <i>Whiro</i> ●	13	14																																																																																																		
15	16	17	18 ☉	19	20	21																																																																																																		
22 <i>Wellington Anniversary Day</i>	23	24	25	26 <i>Rākaunui</i> ○	27	28																																																																																																		
29 <i>Term 1 starts (at the earliest) Auckland /Nelson Anniversary Day</i>	30	31			<table border="1"> <thead> <tr> <th colspan="7">Hakihea 2023</th> <th colspan="7">Huitanguru 2024</th> </tr> <tr> <th>M</th><th>T</th><th>W</th><th>T</th><th>F</th><th>S</th><th>S</th> <th>M</th><th>T</th><th>W</th><th>T</th><th>F</th><th>S</th><th>S</th> </tr> </thead> <tbody> <tr> <td></td><td></td><td></td><td></td><td>1</td><td>2</td><td>3</td> <td></td><td></td><td></td><td>1</td><td>2</td><td>3</td><td>4</td> </tr> <tr> <td>4</td><td>5</td><td>6</td><td>7</td><td>8</td><td>9</td><td>10</td> <td>5</td><td>6</td><td>7</td><td>8</td><td>9</td><td>10</td><td>11</td> </tr> <tr> <td>11</td><td>12</td><td>13</td><td>14</td><td>15</td><td>16</td><td>17</td> <td>12</td><td>13</td><td>14</td><td>15</td><td>16</td><td>17</td><td>18</td> </tr> <tr> <td>18</td><td>19</td><td>20</td><td>21</td><td>22</td><td>23</td><td>24</td> <td>19</td><td>20</td><td>21</td><td>22</td><td>23</td><td>24</td><td>25</td> </tr> <tr> <td>25</td><td>26</td><td>27</td><td>28</td><td>29</td><td>30</td><td>31</td> <td>26</td><td>27</td><td>28</td><td>29</td><td></td><td></td><td></td> </tr> </tbody> </table>		Hakihea 2023							Huitanguru 2024							M	T	W	T	F	S	S	M	T	W	T	F	S	S					1	2	3				1	2	3	4	4	5	6	7	8	9	10	5	6	7	8	9	10	11	11	12	13	14	15	16	17	12	13	14	15	16	17	18	18	19	20	21	22	23	24	19	20	21	22	23	24	25	25	26	27	28	29	30	31	26	27	28	29			
Hakihea 2023							Huitanguru 2024																																																																																																	
M	T	W	T	F	S	S	M	T	W	T	F	S	S																																																																																											
				1	2	3				1	2	3	4																																																																																											
4	5	6	7	8	9	10	5	6	7	8	9	10	11																																																																																											
11	12	13	14	15	16	17	12	13	14	15	16	17	18																																																																																											
18	19	20	21	22	23	24	19	20	21	22	23	24	25																																																																																											
25	26	27	28	29	30	31	26	27	28	29																																																																																														









# Huitanguru

## February 2024

### Waewae Pākura

*This pattern represents the way pākura walk – with caution, patience and alertness. Warriors would also walk that way with their taiaha during a wero, lifting their legs high like the pākura. There is a pākura kaitiaki for our hapū. It is only seen by itself, and so the Pākuratahi valley was named after it.*

Rāhina  
Monday

Rātū  
Tuesday

Rāapa  
Wednesday

Rāpare  
Thursday

Rāmere  
Friday

Rāhoroi  
Saturday

Rātapu  
Sunday

Kohitātea 2024							Poutūterangi 2024								1	2	3	4
M	T	W	T	F	S	S	M	T	W	T	F	S	S					
1	2	3	4	5	6	7					1	2	3					
8	9	10	11	12	13	14	4	5	6	7	8	9	10					
15	16	17	18	19	20	21	11	12	13	14	15	16	17					
22	23	24	25	26	27	28	18	19	20	21	22	23	24					
29	30	31					25	26	27	28	29	30	31					
5							6							7	8	9	10	11
							Waitangi Day										Whiro	
12							13							14	15	16	17	18
19							20							21	22	23	24	25
																		Rākaunui
26							27							28	29			









# Poutūterangi

March 2024

## Waharua Kōpito

Waharua kōpito is the umbilical cord that connects us to Papa-tū-ā-nuku. It is a noa pattern, a ture tangata pattern. Our tikanga is to bury whenua and pito under a tree, in a special place that bonds us with Papa-tū-ā-nuku. One such place is Toropatiti in Tangoio.

Rāhina  
Monday

Rātū  
Tuesday

Rāapa  
Wednesday

Rāpare  
Thursday

Rāmere  
Friday

Rāhoroi  
Saturday

Rātapu  
Sunday

Huitanguru 2024							Paengawhāwhā 2024						
M	T	W	T	F	S	S	M	T	W	T	F	S	S
			1	2	3	4	1	2	3	4	5	6	7
5	6	7	8	9	10	11	8	9	10	11	12	13	14
12	13	14	15	16	17	18	15	16	17	18	19	20	21
19	20	21	22	23	24	25	22	23	24	25	26	27	28
26	27	28	29				29	30					
4					☾		5						
							6						
							7						
							8						
							9						
							10						Whiro ●
11							12						
							13						
							14						
							15						
							16						
							17						☾
							18						
							19						
							20						
							21						
							22						
							23						
							24						
							25						
							26						
							27						
							28						
							29						
							30						
							31						

Taranaki Anniversary Day

Rākaunui ○

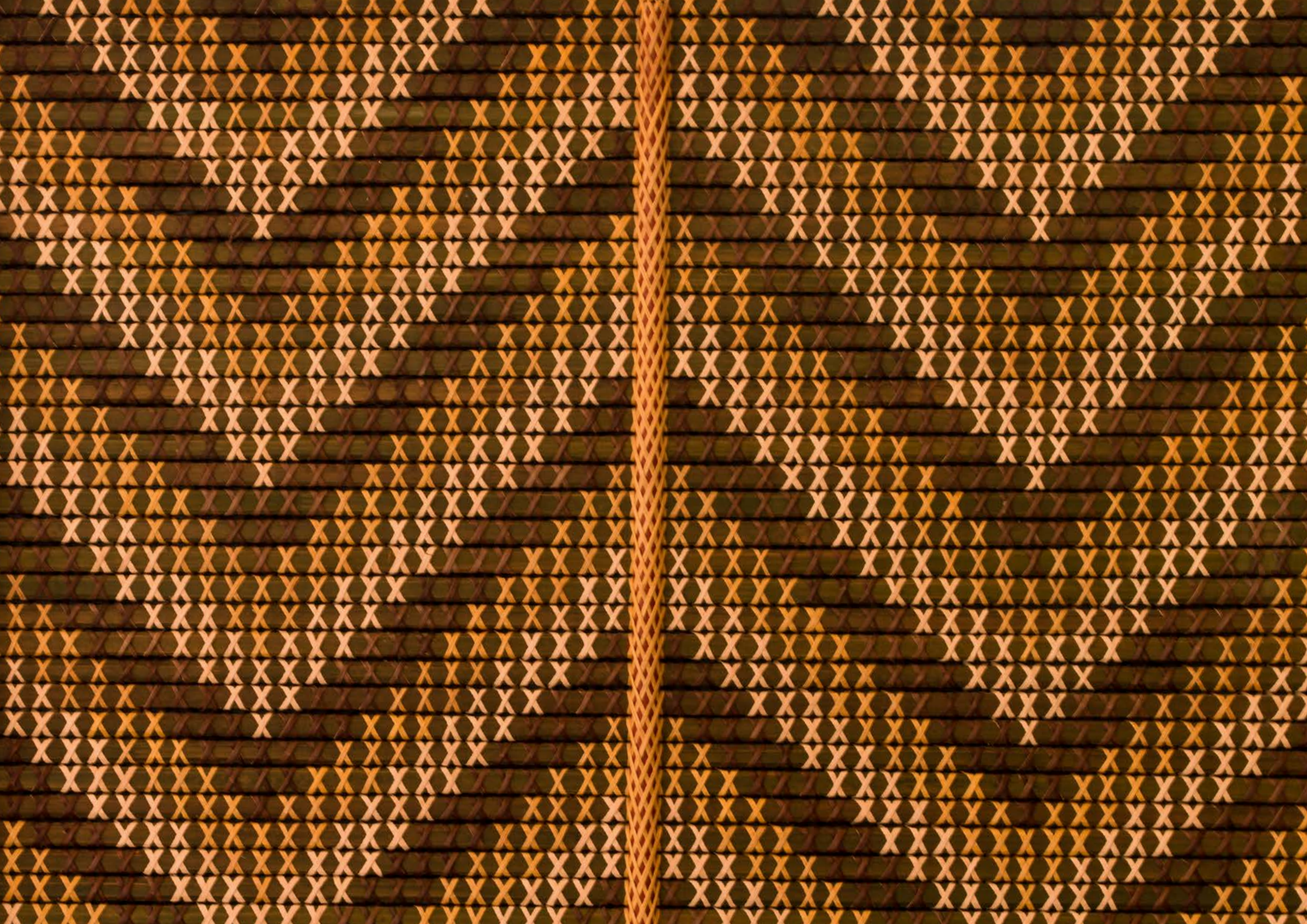
Otago Anniversary Day

Te Whakawhitinga  
o te Rā o Ngahuru  
Autumn Equinox  
See [www.atea.nz](http://www.atea.nz) for details

Good Friday

Easter Sunday









# Paengawhāwhā

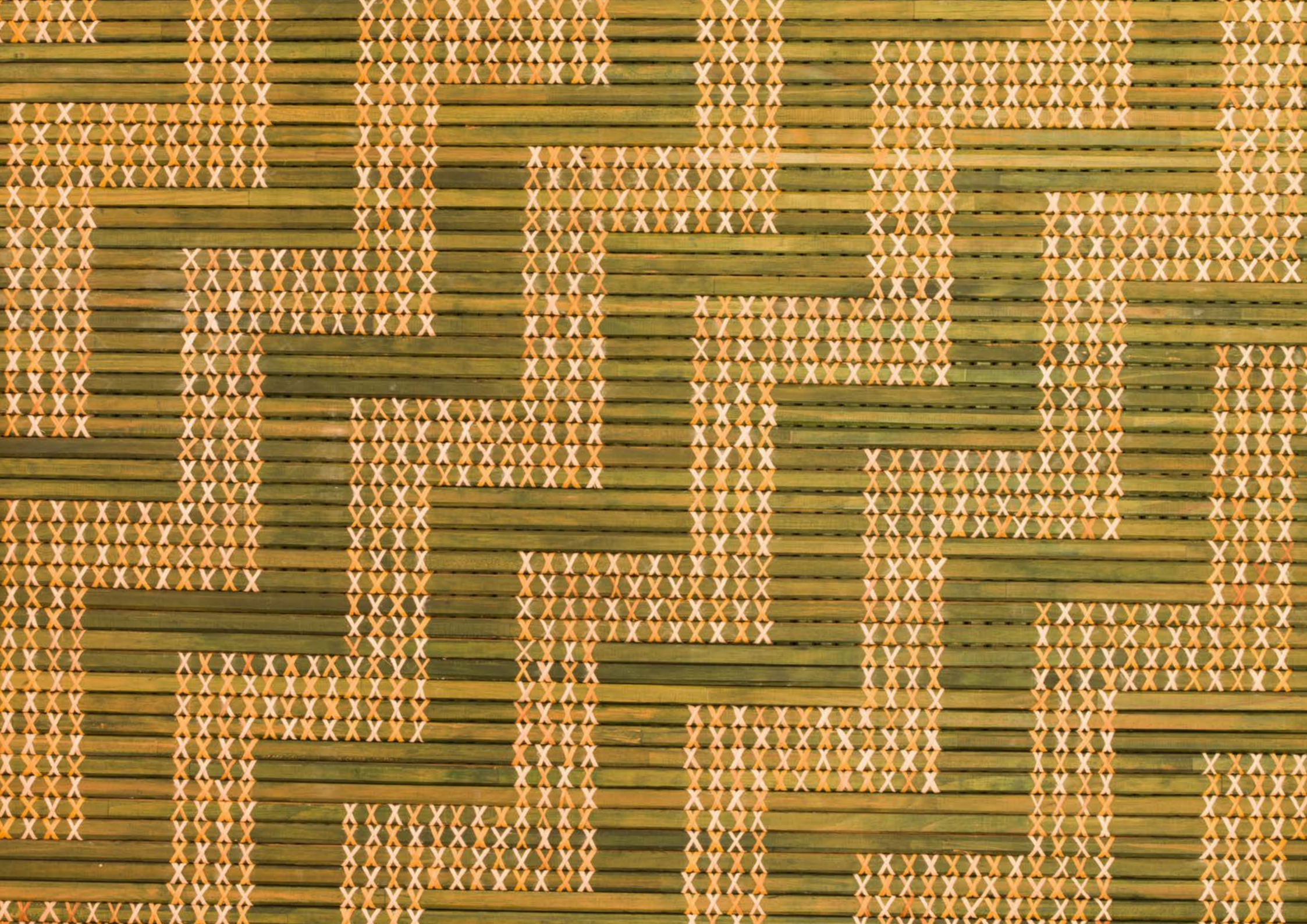
## April 2024

### Niho Taniwha

This tapu pattern is similar to nihoniho (shown in Hereturikōkā) but larger. It represents the unseen spiritual guardians, those we can be fearful of. Tapu was the law and protocols of our tīpuna. There were serious consequences for breaking those laws, yet the tapu was really there to protect, and keep our hapū together.

Rāhina Monday	Rātū Tuesday	Rāapa Wednesday	Rāpare Thursday	Rāmere Friday	Rāhoroi Saturday	Rātapu Sunday																																																																																					
1 <i>Easter Monday</i>	2 ● <i>Southland Anniversary Day</i>	3	4	5	6	7 <i>Daylight saving ends</i>																																																																																					
8 <i>Te Tōnga o Matariki Matariki Setting</i>	9 <i>Whiro</i> ●	10	11	12 <i>Term 1 ends</i>	13	14																																																																																					
15	16 ●	17	18	19	20	21																																																																																					
22	23	24 <i>Rākaunui</i> ○	25 <i>ANZAC Day Commemorative Service at Tangoio Marae ANZAC Day</i>	26	27	28																																																																																					
29 <i>Term 2 starts</i>	30				<p><b>Poutūterangi 2024</b></p> <table border="1"> <thead> <tr> <th>M</th><th>T</th><th>W</th><th>T</th><th>F</th><th>S</th><th>S</th> </tr> </thead> <tbody> <tr> <td></td><td></td><td></td><td></td><td>1</td><td>2</td><td>3</td> </tr> <tr> <td>4</td><td>5</td><td>6</td><td>7</td><td>8</td><td>9</td><td>10</td> </tr> <tr> <td>11</td><td>12</td><td>13</td><td>14</td><td>15</td><td>16</td><td>17</td> </tr> <tr> <td>18</td><td>19</td><td>20</td><td>21</td><td>22</td><td>23</td><td>24</td> </tr> <tr> <td>25</td><td>26</td><td>27</td><td>28</td><td>29</td><td>30</td><td>31</td> </tr> </tbody> </table> <p><b>Haratua 2024</b></p> <table border="1"> <thead> <tr> <th>M</th><th>T</th><th>W</th><th>T</th><th>F</th><th>S</th><th>S</th> </tr> </thead> <tbody> <tr> <td></td><td></td><td></td><td>1</td><td>2</td><td>3</td><td>4</td><td>5</td> </tr> <tr> <td>6</td><td>7</td><td>8</td><td>9</td><td>10</td><td>11</td><td>12</td> </tr> <tr> <td>13</td><td>14</td><td>15</td><td>16</td><td>17</td><td>18</td><td>19</td> </tr> <tr> <td>20</td><td>21</td><td>22</td><td>23</td><td>24</td><td>25</td><td>26</td> </tr> <tr> <td>27</td><td>28</td><td>29</td><td>30</td><td>31</td><td></td><td></td> </tr> </tbody> </table>		M	T	W	T	F	S	S					1	2	3	4	5	6	7	8	9	10	11	12	13	14	15	16	17	18	19	20	21	22	23	24	25	26	27	28	29	30	31	M	T	W	T	F	S	S				1	2	3	4	5	6	7	8	9	10	11	12	13	14	15	16	17	18	19	20	21	22	23	24	25	26	27	28	29	30	31		
M	T	W	T	F	S	S																																																																																					
				1	2	3																																																																																					
4	5	6	7	8	9	10																																																																																					
11	12	13	14	15	16	17																																																																																					
18	19	20	21	22	23	24																																																																																					
25	26	27	28	29	30	31																																																																																					
M	T	W	T	F	S	S																																																																																					
			1	2	3	4	5																																																																																				
6	7	8	9	10	11	12																																																																																					
13	14	15	16	17	18	19																																																																																					
20	21	22	23	24	25	26																																																																																					
27	28	29	30	31																																																																																							









# Haratua

## May 2024

### Poutama

This tukutuku covers the poutuarongo of Punanga Te Wao.  
The pattern symbolises looking to the future, striving for  
knowledge and enlightenment. We strive to better ourselves as  
individuals, as whānau, as hapū.

This tukutuku is also known as *Te Arawhata ki te Rangi*,  
the steps to heaven.

Rāhina  
Monday

Rātū  
Tuesday

Rāapa  
Wednesday

Rāpare  
Thursday

Rāmere  
Friday

Rāhoroi  
Saturday

Rātapu  
Sunday

		1	2	3	4	5
6	7	8 <i>Whiro</i>	9	10	11	12 <i>Te Rā o Māmā Mother's Day</i>
13	14	15	16	17	18	19
20	21	22	23	24 <i>Rākaunui</i>	25	26
27	28	29	30	31	<b>Paengawhāwhā 2024</b> M T W T F S S 1 2 3 4 5 6 7 8 9 10 11 12 13 14 15 16 17 18 19 20 21 22 23 24 25 26 27 28 29 30	
					<b>Pipiri 2024</b> M T W T F S S 1 2 3 4 5 6 7 8 9 10 11 12 13 14 15 16 17 18 19 20 21 22 23 24 25 26 27 28 29 30	



# Papakupu

## Glossary

MAUNGAHARURU-TANGITŪ TRUST

PO Box 3376, Hawke's Bay Mail Centre, Napier 4142

1st Floor, Suite 3B, 1 Wright Street, Ahuriri, Napier 4110

06 835 3300 0800 TANGOIO / 0800 826 4646

info@tangoio.maori.nz [www.tangoio.maori.nz](http://www.tangoio.maori.nz)



Māori	English
Apai	Front wall inside the whare tipuna
Hākari	Feast
Hakihea	December
Hapū	Kinship group
Haratua	May
Hereturikōkā	August
Huitānguru	February
Kāhui Kaumātua	Elders' committee
Kai	Food
Kaitiaki	Guardian
Kaumātua	Elders
Kiekie	A native vine
Kohitātea	January
Kōrero	Stories
Kuia	Female elder
Kūmara	Sweet potato
Mahau	Porch
Mahuru	September
Manuhiri	Visitors
Maramataka	Calendar
Matariki	Māori new year
Mātauranga	Knowledge
Ngahere	Forest
Noa	Free from tapu
Pā	Fortified village

Māori	English
Paengawhāwhā	April
Pākura	Pūkeko bird
Papa-tū-ā-nuku	Earth mother
Pātiki	Flounder
Pīngao	Golden sand sedge
Pito	Section of umbilical cord nearest the baby's body
Poutuarongo	Back wall of the whare tipuna
Poutūterangi	March
Pūrākau	Legend
Rākaunui	Full moon
Rangatira	Chief
Roimata	Tears
Rōpū	Group of people
Taiaha	Long wooden weapon
Takiwā	Traditional area
Tāne	Man
Tangata whenua	People born of the whenua
Taonga	Treasures
Tapu	Sacred; laws and protocols of the tīpuna
Tara iti	Area on the left on entering the whare tipuna
Tara nui	Area on the right on entering the whare tipuna
Te Moana-nui-a-Kiwa	Pacific Ocean

Māori	English
Tiakina	Caring for
Tieke	Saddleback bird
Tikanga	Custom
Tinana	Body
Tīpuna	Ancestors
Toroa	Albatross
Tuitui	Lashing, sewing
Tukutuku	Lattice-work
Tūpāpaku	Deceased person's body
Ture tangata	Physical laws
Uri	Descendants
Waiata	Song
Waka	Canoe, boat
Wero	Challenge
Whakanuia	Celebration
Whakapapa	Line of descent
Whakataukī	Proverb, saying
Whānau	Family
Whanaunga	Relation
Whare tipuna	Ancestral house
Whenua	Placenta
Whiringa-ā-nuku	October
Whiringa-ā-rangi	November
Whiro	First night of the new moon