



# Pūrongo ā-Tau 2023-2024

## Annual Report 2023-2024

### Hui ā-Tau | Annual General Meeting

10 karaka i te ata, Rāhoroi te 27 o Hōngongoi 2024  
10 am, Saturday 27 July 2024

Napier War Memorial Centre, Marine Parade, Napier





**Cover photo:** Tina Rose Albert-Dixon and daughter Amarley at their new cabin at Te Kuaka, Westshore, Ahuriri.

**This page:** Photo: Ngā Kuaka art installation near the airport at Westshore, Ahuriri. Photographer: Richard Brimer.



# Rārangi Upoko Contents

<b>Ko Tātau o Maungaharuru-Tangitū</b>	<b>02</b>
<b>Ō tātau tāngata</b> Our people	<b>03</b>
<b>Breakdown of Te Matau-a-Māui</b> (Hawke's Bay)	<b>03</b>
<b>Population Age Breakdown as at 31 March 2024</b>	<b>04</b>
<b>Mō Mātau</b> About Us	<b>05</b>
<b>Pūrongo Toihau</b> Message from the Chairperson	<b>06</b>
<b>Te Hawaikitanga, Te Taikura me Ngā Mātāpono</b> Our Vision, Mission and Values	<b>08</b>
<b>Kia Manawaroa, Maranga e Tū</b> Cyclone Recovery and Resilience Work	<b>10</b>
<b>Kia Niwha</b> Strong People	<b>17</b>
<b>Kia Rawaka</b> Strong Hapū Economy	<b>23</b>
<b>Pūrongo Maungaharuru-Tangitū Limited</b> MTL Chair Report	<b>24</b>
<b>He Kāinga Taurikura</b> A Treasured Environment	<b>26</b>
<b>He Waka Kairangatira</b> A Great Organisation	<b>34</b>
<b>Maungaharuru-Tangitū Trust (MTT)</b>	<b>35</b>
<b>Maungaharuru-Tangitū Limited (MTL)</b>	<b>36</b>
<b>Rautaki ā-Tau 2023 – 2024</b> Annual Plan 1 April 2023 – 31 March 2024; Results	<b>38</b>
<b>Rautaki ā-Tau 2024-2025</b> MTT Annual Plan 1 April 2024 – 31 March 2025	<b>42</b>
<b>Pūrongo Pūtea</b> Group Performance at a Glance	<b>45</b>
<b>Maungaharuru-Tangitū Trust Group Financial Reports</b> For the 12 months ended 31 March 2024	<b>46</b>
<b>Maungaharuru-Tangitū Trust Group Summary Profit and Loss</b> For the 12 months ended 31 March 2024	<b>48</b>
<b>Maungaharuru-Tangitū Trust Group Summary Balance Sheet</b> As at 31 March 2024	<b>49</b>
<b>Papakupu</b> Glossary	<b>50</b>
<b>Hui ā-Tau</b> Annual General Meeting	<b>51</b>



# Ko Tātau o Maungaharuru-Tangitū

Maungaharuru-Tangitū Trust (MTT) represents our Hapū including Ngāi Tauira, Ngāi Tahu, Ngāi Te Ruruku ki Tangoio, Ngāti Whakaari, Ngāti Kurumōkihi and Ngāti Marangatūhetaua (Hapū).

Their takiwā is from the Waitaha River in the north, Tangitū (the moana) in the east, Waiohingānga (Esk) River to Keteketerau in the south, to Maungaharuru (the mountain range) in the west (Takiwā).

## Te Takiwā

### Traditional Area

Map: Takiwā (traditional area) of the Hapū represented by the Maungaharuru-Tangitū Trust



# Ō tātau tāngata

## Our people

Our registered members number 6,597. Of the members we have addresses for, 41% live in Hawke's Bay and 52% of them live in Napier. We also have a youthful population, with 55% of our members under the age of 30 years in Hawke's Bay.

### Elsewhere in Aotearoa

2,551 | 39%

### Elsewhere in the World

795 | 12%

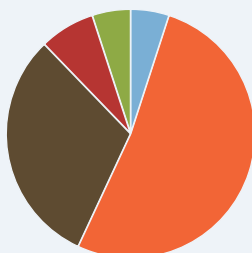
### Unknown Address

569 | 8%



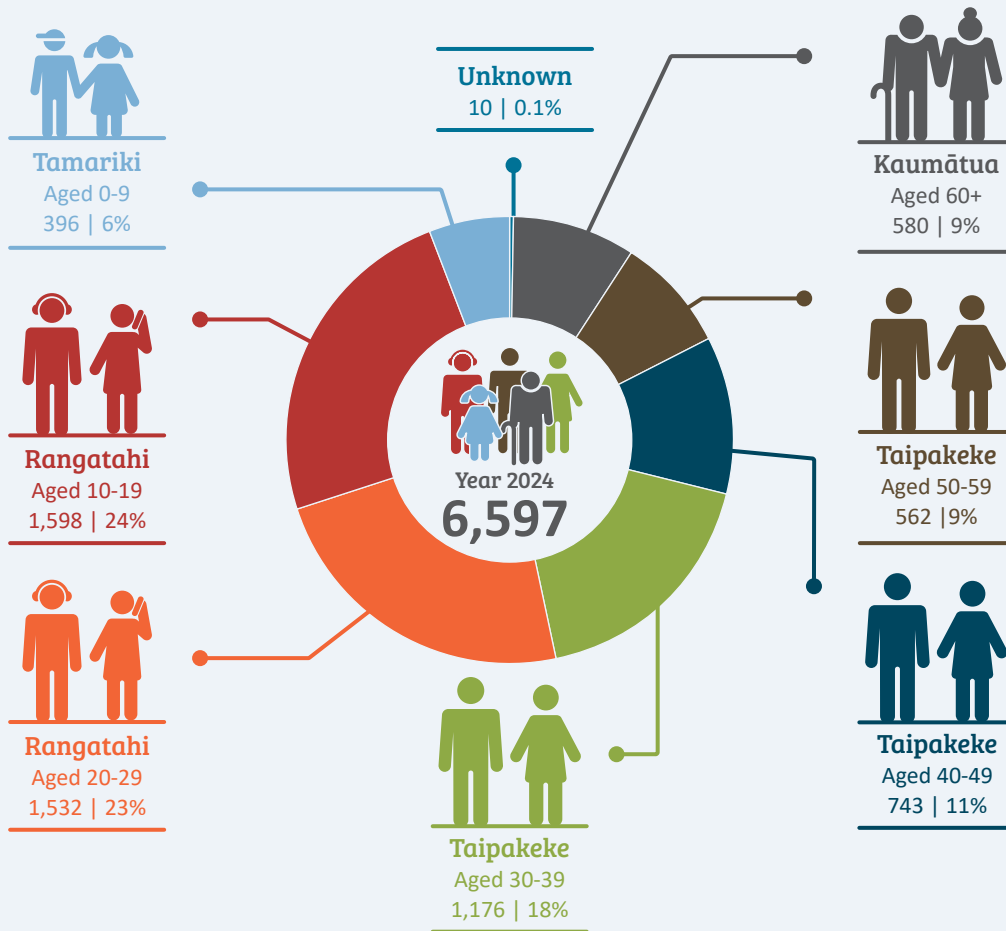
## Breakdown of Te Matau-a-Māui (Hawke's Bay)

- Takiwā – 121 | 5%
- Napier – 1,393 | 52%
- Hastings – 843 | 31%
- Northern Hawke's Bay – 181 | 7%
- Central Hawke's Bay – 144 | 5%



Registered members of Maungaharuru-Tangitū Trust live throughout Aotearoa and the world, but the largest concentration by far is in Hawke's Bay. Within Hawke's Bay, most of our whānau live in Napier.

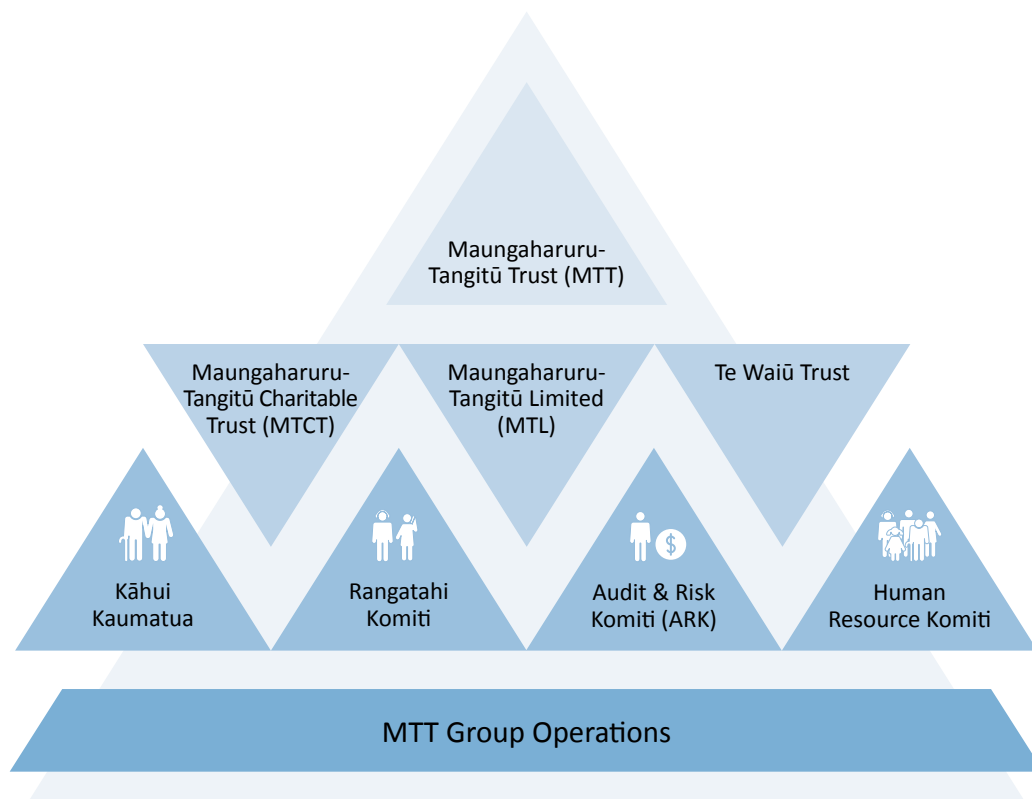
# Population Age Breakdown As at 31 March 2024



## Hapū Growth



# Mō Mātau About Us



The Maungaharuru-Tangitū Group is made up of four entities.

**The Maungaharuru-Tangitū Trust (MTT)** was established to receive, hold, manage and administer the assets of the Trust for purposes that are beneficial to members of our Hapū. Maungaharuru-Tangitū Trust is a post-settlement governance entity and is the voice and representative body for our Hapū. Part of the Trust’s role is to foster and promote amongst members of the Hapū:

- spiritual values, unity, support and cooperation;
- recognition of traditional customs and values; and
- physical, social, and economic wellbeing and advancement.

The trustees of MTT are Tania Hopmans (Toihau I Chair), Kelly May (Deputy Chair), Mara Andrews, Charmaine Butler, Robbie Paul, George Puna and Coralee Thompson (Trustees).

The role of the **Maungaharuru-Tangitū Charitable Trust (MTCT)** is to undertake charitable projects on behalf of the Hapū. The trustees of MTT are also the trustees of MTCT.

**Maungaharuru-Tangitū Limited (MTL)** is our investment company. Its role is to grow our investments and manage our assets in accordance with MTT’s Statement of Investment Policies and Objectives (SIPO). The directors of MTL are Anthony Bow (Chair), Tom Manaena and Fiona Carrick.

**Te Waiū Trust** governs the lake beds and the air above them, of Lakes Opouahi, Waikōpiro, Orakai and part of Lake Tūtira.

There are also several committees that help the Trustees with their work.

**Kāhui Kaumātua** is a group of kaumātua who provide advice to our Trustees on matters relating to the tikanga, reo, kawa, kōrero and whakapapa of the Hapū.

The role of the **Audit and Risk Komiti** is to manage risk, audit functions and ensure compliance with legislation, policies and procedures across the group. Komiti members are Jon Nichols (Independent Chair), Charmaine Butler, Coralee Thompson, George Puna and Kelly May (Trustees).

## Pūrongo Toihau Message from the Chairperson

---

*Ka tangi te tītī, ka tangi te kākā, ka tangi hoki ahau. Tīhei mauri ora!*

*Tuatahi, he roimata ka heke i ngā rau maharatanga ake ki ngā tini aituā. Tuarua, ki a koutou ngā kanohi ora, ngā waihotanga iho, tēnā koutou, tēnā koutou, tēnā koutou katoa.*

---

The kuaka is a world record holder, for the longest non-stop migration of any species in the world. A kuaka was tracked in 2020 flying non-stop for 11 days over a distance of 12,000 km with speeds up to 80-100 km per hour.

It is no wonder our tīpuna looked to the skies when they first sailed across the Pacific to Aotearoa. Matua Bevan Taylor retold this kōrero at the opening of Te Kuaka cabins, specifically that it was the kuaka that helped navigate our waka, Tākitimu to the shores of Aotearoa.

To this day the kuaka continue this epic journey from Alaska and the Arctic to Aotearoa, without a break. One of their destinations and favourite spots to roost in Aotearoa is the Westshore Wildlife Reserve, Ahuriri Estuary in Napier.

Hence the symbology of the naming of Te Kuaka cabins by Matua Matiu Eru. The kuaka endure the long journey here, once here they nest, feed, regain strength and stamina.

Te Kuaka cabins are likened to this part of the kuaka journey, it is a safe place for whānau to live and recoup until permanent homes can be found. Te Kuaka cabins are a major achievement of the last financial year, providing emergency homes for our whānau affected by Cyclone Gabrielle. While the story about Te Kuaka cabins features on page 13 in the Annual Report, I would like to acknowledge the many hurdles and setbacks that were overcome. To start with, there was no funding, no land and no cabins. This was no small feat, but a feat that was mastered through the hard work and perseverance of Kelly May and Hayley Lawrence in our MTT Recovery Team. Ngā mihi nui ki a rāua.

The cyclone exacerbated the existing shortage of warm, dry and safe homes for our whānau living in Te Matau ā-Māui. While the recovery and rebuild work continues, the Trustees are turning their attention to developing a Housing Strategy for our Hapū in Te Matau ā-Māui.

There are the same challenges of no funding, no land and no houses. Helpfully, we now have some experience of tackling these issues and have formed relationships with funders, advisors and suppliers that will be useful in the next twelve months and the years to come.

The Housing Strategy will be prepared alongside a revised strategic plan for the next five years and we will share those with you as they are developed.


*Te kuaka marangaranga, kotahi manu i tau ki te tahuna, tau atu, tau ra.*

*The kuaka flock has arisen; one bird has come to rest on the beach, others will follow.*

Importantly, we would like to thank our staff, contractors and supporters who have helped us with the mahi we do for our Hapū. Mei kore ake koutou. Also, a special thank you to Liz Munroe who was our Acting Chief Executive Officer during the last financial year. Liz brought a wairua of care and support to our tari, kaimahi and kaupapa. In addition, we appreciate the guidance from our Kāhui Kaumātua led by our Pou, Matua Bevan Taylor and the work undertaken by the Directors of Maungaharuru-Tangitū Trust led by their Chair, Anthony Bow and Jon Nichols, the independent Chair of our Audit and Risk Committee. They all help to keep us tracking towards our goals.

On the following pages, are stories about the work we have undertaken for our Hapū and our work plan for the 2024/2025 financial year. More information will be shared at the AGM and myself and our Trustees look forward to seeing you there.

Ngā manaakitanga



**Tania Hopmans**

**Toihau** | Chair

Maungaharuru-Tangitū Trust





*Photo: Tania Hopmans -Toihau, Kelly May -Deputy Chair and MTT Trustees Robbie Paul, Charmaine Butler and Coralee Thompson at the MTT AGM 2023. Not shown in this photo are Trustees Mara Andrews and George Puna. Photographer: Samson Wainohu.*

# Te Hawaikitanga, Te Taikura me Ngā Mātāpono

## Our Vision, Mission and Values

---

### Te Hawaikitanga

#### Our Vision

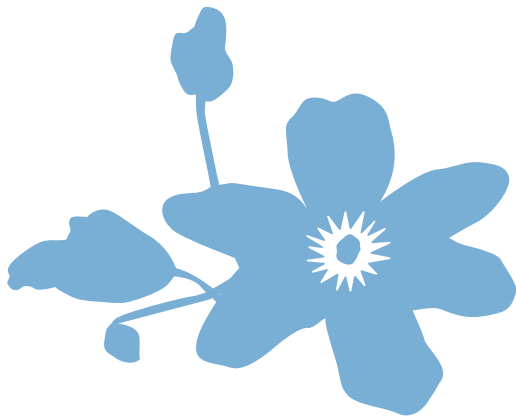
---

#### Puāwaitanga o te Puawānanga

##### Living our Dreams

Our vision represents our ultimate goal, a future where we are all living our dreams with our whānau prospering culturally, socially, spiritually and economically. This vision speaks of whānau, Hapū and the MTT Group defining their future path and being in control of their destiny. It is our desire that we are empowered as individuals, whānau and Hapū to realise and achieve our dreams.

The term puawānanga, refers to the Clematis vine which is significant to Te Hawaikitanga and our Takiwā, not only as a vine found in our native forests but also as the name of our whareni and kōhanga reo – Punanga te Wao.



### Te Taikura

#### Our Mission

---

#### Kia Tipu te Mauri Ora

##### Growing our Inner Strength

We exist to enable the holistic growth of our Hapū – building the capability, capacity and tino rangatiratanga of our people, culture, economy, and environment.

### Ngā Mātāpono

#### Our Values

---

Our values reflect the things that will always be important to us as Hapū and an organisation. These not only guide the way we make decisions; they also contribute to our wellbeing. We aspire to live and breathe our values every day.

---

**Pūmau te Wairua** (Spiritually Strong) means we understand, appreciate and apply our spiritual beliefs.

---

**Whai Hua** (Progressive) means a commitment to continuous improvement. This is reflected through a series of values including: innovation, ambition and discipline.

---

**Tuakiri Motuhake** (Strong Identity) acknowledges the importance of our cultural identity as a source of pride, uniqueness and connection with each other. This value promotes the practice, learning and application of our culture. Strong identity brings a sense of belonging and confidence.

---

**Oranga Ngākau** (Wellbeing) represents a focus on the holistic nature and wellbeing of our people, Hapū and organisation. This value promotes a balanced approach to development and acknowledges the interconnectedness of our world.

---

**Whanaungatanga** (Family) represents a set of values including Manaakitanga, Aroha, Tauutuutu and Whakapapa (Caring, Love, Reciprocity and Connectedness). We believe whanaungatanga fosters connections and relationships.

---

**Te Piri Ngātahi** (Unity) means working together for our greater good. Unity provides greater strength and enables us to overcome challenges and achieve our future dreams together.

---

---

## Ngā Aronga Nui

### Strategic focus areas

Over the next five years, we have organised our actions around these five strategic focus areas:

- **Kia Niwha** (Strong People): Building the capability (ability and knowledge) and capacity (resources and energy) of our people to achieve their potential.
- **Kia rirā te Pā kai ngā Rekereke** (Strong Culture, Reo and Marae): Developing our Marae; strengthening our culture through reo Māori revitalisation and mātauranga Māori (traditional views, perspectives, teachings and cultural practices) to grow a sense of belonging, identity, confidence and pride.
- **Kia Rawaka** (Strong Hapū Economy): Building our Hapū economy to provide the resources we need to plan and action our dreams and goals over the relevant time.
- **He Kāinga Taurikura** (A Treasured Environment): Caring for and protecting our environment – Kaitiakitanga – building our understanding, connectedness and involvement with our environment.
- **He Waka Kairangatira** (MTT Group – A Great organisation): Operating an effective organisational structure that understands its purpose and role. Delivering great results for our people.

## Ngā tauira ā ngā Mātāpono

### Guiding principles

Our guiding principles inform how we operate within our organisation. They are similar to values but differ in the sense that they are specific to the organisation (rather than the Hapū) and may change over time as we adapt within our operating environment.

Our guiding principles focus on applying three disciplines:

- **Kia Rangatira te Tū** (Disciplined People),
- **Kia Rangatira te Whakaaro** (Disciplined Thought),
- **Kia Rangatira te Mahi** (Disciplined Action).

The overarching purpose of these principles is to ensure we do things in a way that ensures efficiency and effectiveness of our effort.

This year's Annual Report 2023- 2024 is organised by actions and achievements relating to Kia Manawaroa, Maranga e Tū (Cyclone Recovery and Resilience Work) and several of our strategic focus areas – Kia Niwha, Kia Rawaka, He Kāinga Taurikura.

The following pages include highlights from each of these areas over the 2023-2024 financial year.

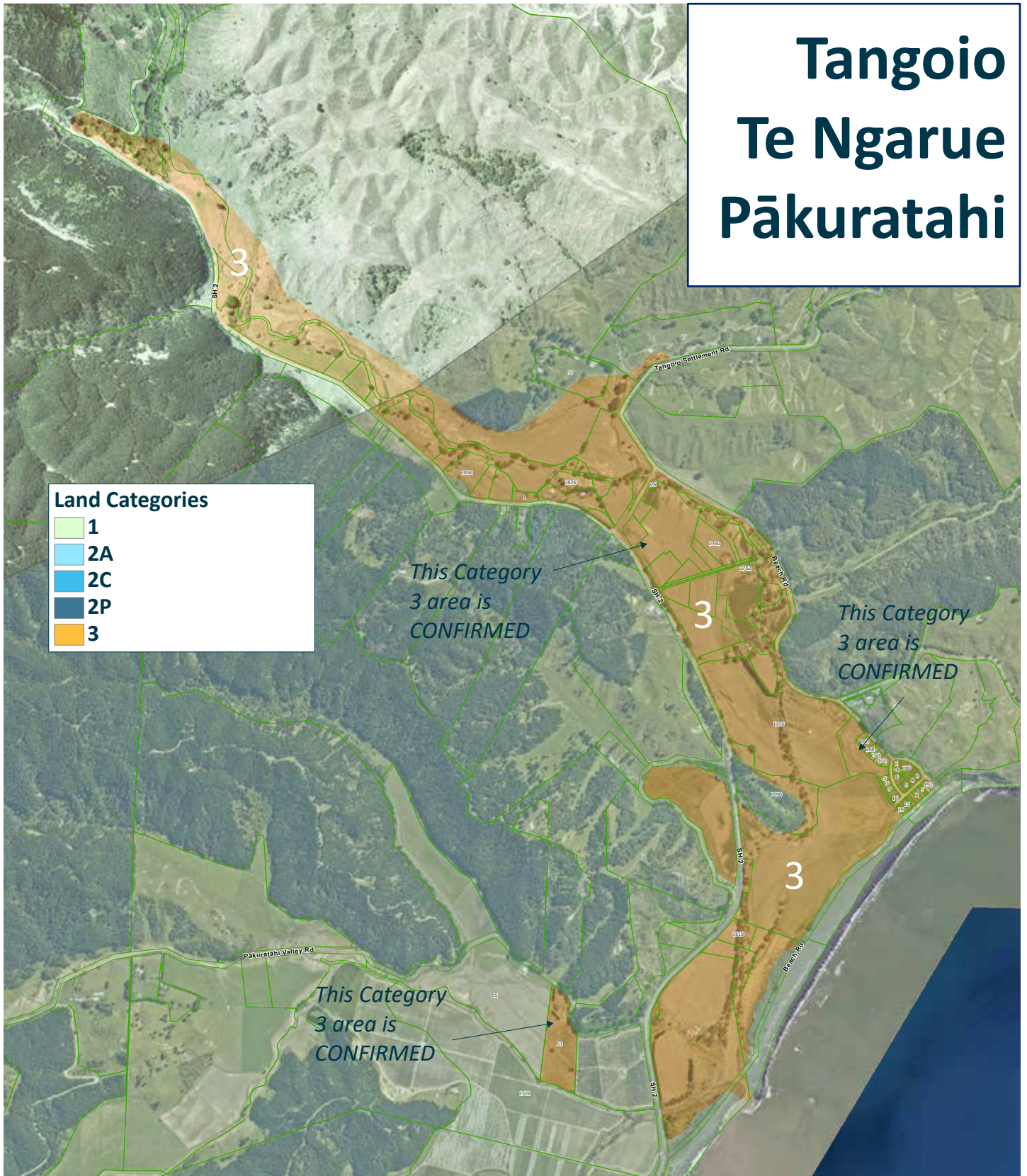




# Kia Manawaroa, Maranga e Tū

## Cyclone Recovery and Resilience Work

# Tangoio Te Ngarue Pākuratahi





In April 2023, MTT prepared a Recovery Plan entitled the *MTT Locality Plan - Hawke's Bay Cyclone Gabrielle Recovery April 2023*. Various workstreams were identified to support the recovery of our whānau, Hapū, Marae and Takiwā from the impacts of Cyclone Gabrielle.

The top five workstreams in order of priority were:

				
<b>1. Marae</b>	<b>2. Housing for affected whānau</b>	<b>3. Finding resilient land</b>	<b>4. Kōhanga Reo playground</b>	<b>5. MTT Recovery Team</b>

During the last twelve months the Recovery Team has progressed these workstreams. For some of the workstreams the scope of the work was adjusted to take account of policy and other announcements by the government and councils throughout the year. Below is an update on each of these workstreams.

### Finding resilient land

Land is key to the two top priorities of rebuilding our Marae and papakāinga that have been damaged by the cyclone. During 2023, the Crown and Hawke's Bay Regional Council made some important announcements and decisions that impacted our options to relocate and rebuild.

### Category 3 lands

Shortly after the Cyclone, the Crown developed policies about the 'Future of Severely Affected Lands' or 'FOSAL'. Three categories of land were identified, Categories 1 to 3. Category 3 is the classification given to those areas where:

- there is an intolerable risk of injury or death
- there is very significant and regular damage to property
- the risk cannot be sufficiently mitigated.

In relation to those lands, the Crown's objective is to encourage residents to move and settle in safer areas.

The Crown tasked the Hawke's Bay Regional Council with the work to identify what lands were Category 1, 2 or 3. On 1 June 2023, whānau learned that large areas of Te Waiohingānga (Esk), Petane, Pākuratahi, Tangoio and Arapawanui had been provisionally classified by the Hawke's Bay Regional Council as Category 3. This categorisation affected Tangoio Marae and our whānau whose homes were impacted by the cyclone. Around September 2023, following a period for submissions, the Hawke's Bay Regional Council finalised the maps of the Category 3 areas.

As a consequence of Category 3 classification, only limited repairs can be made to existing homes. Also, it is unlikely future residential or Marae development will be possible on Category 3 land. It is possible though to continue other activities like grazing or cropping on Category 3 lands.

As a consequence of Category 3 classification, only limited repairs can be made to existing homes. Also, it is unlikely future residential or Marae development will be possible on Category 3 land. It is possible though to continue other activities like grazing or cropping on Category 3 lands.



Photo: aerial view of Tangoio Marae shortly after Cyclone Gabrielle. Photographer: Richard Brimer

## Two pathways – General land and Kaupapa Māori

As a result of the FOSAL policies, in August 2023 the Crown announced two pathways for support packages for affected residents of Category 3 lands.

### General Land

The first pathway is for general land and is led by local councils- the Napier City Council and the Hastings District Council. Under this pathway the owners of Category 3 homes on general land have the option of a voluntary buyout of their home by their local council. The offer is based on a pre-cyclone market valuation of their home. The costs of the buy-out programme are funded 50% by the Crown and 50% by the local council. To date there has been a strong uptake of the voluntary buy-out scheme and it is likely that most of the owners of homes on general land in Category 3 will agree to a buy-out of their home. Detailed policies and a dashboard showing the progress of the buy-out programme are available on <https://www.hastingsdc.govt.nz/cyclone-gabrielle/cat3buyout/>.

### Kaupapa Māori

The second pathway is for marae and whānau homes on Māori freehold land or general land. The Crown recognised that a different approach, one based on our Treaty partnership, was needed to provide a support package for the recovery of Māori communities affected by the cyclone. This pathway is being led by the Crown, by the Cyclone Recovery Unit (CRU, in the Office of Prime Minister and Cabinet) and Te Arawhiti (the Office for Māori Crown Relations). It is 100% funded by the Crown.

## Negotiations with the Crown about land

MTT was given a mandate to enter into discussions with the Crown by the Marae Trustees and some of the whānau who were affected by the floods at Te Waiohingānga (Esk), Petane, Tangoio and Arapawanui. The purpose of the discussions was to explore support packages for the Marae and those affected whānau.

Discussions with Crown officials began as early as June 2023. They focussed on the need for land, acknowledging that Marae and papakāinga should be located together, as one supports the other. The Crown saw this as a ‘community’ solution. We also reminded the Crown of the historical context for our Hapū of the loss of land through raupatu (confiscations) and that the Marae and various Hapū papakāinga were located on what little land remained- which was flood prone and is now Category 3. In addition, we repeated the findings of the Waitangi Tribunal that the Crown had breached the Treaty of Waitangi because in the past it left our Hapū with insufficient land for our present and future needs. Much like the situation then, our Hapū have no land to relocate and rebuild the Marae and papakāinga.

We shared the information about the Marae Options project, and how we had looked (unsuccessfully) for alternative blocks of land to relocate the Marae to in or near Tangoio. As part of the support package, we have asked for the Crown’s help to acquire land for the Marae and papakāinga.





*Photo: the whare tipuna, Punanga Te Wao, shortly after Cyclone Gabrielle. Photographer: Richard Brimer*

## Tangoio Marae

Two issues confronted our Marae Trustees and Hapū. When and how would the Marae be rebuilt and what could be done to provide a makeshift Marae in the meantime?

## Temporary Marae

Following the cyclone, the Marae and MTT Chairs discussed the need for a temporary Marae- somewhere our whānau could gather for the next few years while the Marae is rebuilt on a new site. The Recovery Team explored several properties that had come up for sale in Tangoio and sought expert advice from civil engineers, architects and lawyers (about issues to do with Marae reservations, consents and planning requirements). Unfortunately, none of those properties were suitable. The Recovery Team then contacted several councils to see if they had any properties that would be appropriate for a temporary Marae. The Napier City Council responded that their facilities at Whitmore Park, 96A Nuffield Avenue would soon be available for lease. The property offered some good indoor facilities with plenty of parking in a handy location in Napier. This opportunity was taken up by the Marae Trustees who have since secured a lease of the facilities.

## Permanent solution for the Marae

Aside from finding land, another issue is securing funding to rebuild the Marae. As we learned from the Marae Development project over the last few years, the costs are significant. Helpfully, we were able to share as a



*Photo: Deane King cleaning the whakairo inside Punanga Te Wao. Photographer: Hayley Lawrence*

basis for our discussions with the Crown the Masterplan, concept design and costs for the Marae rebuild that was planned just before the cyclone. We advocated for 'like for like' with buildings of a similar size to the previous Marae and of a modest design. We noted that the Hapū were not coming to this issue empty handed. The Marae Trustees would contribute their insurance proceeds and MTT would contribute the \$3m Marae fund it holds as part of the Treaty Settlement.



Photo: Te Kuaka cabins at dawn blessing. Photographer: Richard Brimer.



Photo: (left to right) Matua Matiu Eru, Matua Bevan Taylor, Whaea Whakiao Hopmans. Photographer: Richard Brimer.



Photo: (right to left) Sharon Albert-Dixon with daughter Tina Rose Albert-Dixon and mokopuna Amarley and son Ropata Dixon, collecting their cabin keys.

## Papakāinga

### Temporary cabins – Te Kuaka

There were whānau living in Te Waiohingānga (Esk), Petane, Tangoio and Arapawanui, whose homes had been severely impacted by the flooding during Cyclone Gabrielle. Some remained in their damaged homes while also trying to repair them. Others sought emergency accommodation with their whānaunga or through the Temporary Accommodation Service (of the Ministry of Business, Innovation & Enterprise) in campervans, caravans, cabins, motels and houses. Some whānau were able to stay together, while some were split between different accommodation.

#### Finding temporary cabins

MTT offered to support whānau whose homes were located in our takiwā and affected by the cyclone. Interested whānau provided MTT with their mandate to explore options for temporary cabins. The goal was to provide whānau with safe, warm, dry accommodation with a more certain tenure (of several years and affordable rent). The challenges to secure cabins were many. MTT needed to find suitable land (in Category 1- with a lower flood risk), as well as funding for the cabins, and suppliers of cabins and trades to help install the cabins.

Funding for the temporary cabins was eventually secured from the Ministry of Housing and Urban Development (MHUD) with an agreement signed in October 2023.

A search was undertaken for Category 1 land in Tangoio and nearby areas. We also reached out to various Government agencies and local councils to see if they had land that could be used for temporary cabins. After exploring various options, the best available site was the one offered by the Napier City Council at Domain



Road in Westshore. A lease was signed with the Council and work to prepare the site began promptly after. Several of our affected whānau in Arapawanui had access to Category 1 land near where they had been living and another whānau was able to access land at the back of a home belonging to their whanaunga.

We looked at various suppliers for cabins and settled on HouseMe Transportable Homes. We are grateful to HouseMe as they agreed to meet the tight timeframes under our funding contract by building and delivering our cabins in their shortest time ever. So it was with some relief, when the first 10 cabins arrived at Arapawanui, Maraenui and Westshore in early December 2023. Five more cabins arrived at Westshore between February and March 2024 and several small cabins arrived in May. He mihi mutunga kore ki a rātau!

MTT had already engaged a building project manager and needed to contract tradies to install the cabins, including plumbers, electricians, builders, landscapers. This was challenging given the shortage of available tradies as well as the busy period in the run-up to the Christmas holidays.

However, we were rapt that some of our own whānau were working for our contractors including:

- Maihi Cook and Jordan Cherrington – Stop Digging!
- Paul Manaena – Laser Electrical Napier
- Maru Grey – landscaping
- Jahleen Albert-Dixon – Above Cleaning Services
- Tirama Taane – Toa Landscaping

Tau kē koutou!

After a massive effort, a total of 18 cabins were provided for Te Kuaka Westshore, Arapawanui and Maraenui housing 22 affected whānau.

### **Te whakatūwheratanga**

The blessing and opening of the cabins at 'Te Kuaka', Westshore was held on 29 April 2024.

Matua Matiu named the complex of cabins, Te Kuaka, as in the past the Westshore site was part of the wetlands by the airport, which were populated by kuaka (godwits). Also because kuaka are manu that come and go seasonally, and similarly, whānau will be living at the site temporarily.

Matua Bevan also reminded us that the kuaka was one of the birds that helped lead the waka Tākitimu to Aotearoa. Kuaka were known to help our tīpuna navigate their waka during the day and the night. They would follow the flight

of the kuaka during the day. During the night they would be guided south by the kuaka cries above. As migratory birds the kuaka navigate from Alaska to Aotearoa, a flight that is fraught with challenges. Kuaka can teach us about endurance, resilience and preparing well to navigate the winds of both opportunity and adversity.

One affected whānau whose home was in Tangoio told us that after the cyclone they had 32 days without power, and much longer living amongst the silt and dust. This whānau moved into Te Kuaka cabins immediately following the blessing.

Sharon Albert and her whānau also moved into Te Kuaka. Their whānau home was at Tangoio Beach.

Sharon says, *"As the keys for my cabin were placed in the palm of my hand, I held back tears of joy and relief that finally we have a home again. Since being in our cabin surrounded by all our own personal items it has been amazing. The trauma of the cyclone and the anxiety issues have all subsided since being in my cabin."* *"Our cabin is perfect and caters for my needs, everyday chores are a breeze, warming up my cabin is fast and most importantly I am so comfortable and relaxed because my cabin is cosy and homely. This is my home and I'm happy."*

Sharon's daughter Tina Rose Albert-Dixon and mokopuna Amarley feature on the cover of this report.

### **Permanent housing solution**

While the cabins provide a temporary fix for affected whānau, they are not a permanent housing solution. Accordingly, MTT has engaged with the Crown to explore support packages for affected residents who have given MTT a mandate to do so.

### **Delays to outcomes for land, Marae and papakāinga**

There have been considerable delays to achieving outcomes for finding resilient land and funding for the Marae and papakāinga. These delays have been caused in part by last year's general elections, the subsequent change of government and appointment of new Ministers. The Kaupapa Māori pathway led by the Crown has also lagged significantly behind the general land pathway led by the councils. Assurances have been given several times by Prime Minister Luxon that the Kaupapa Māori process would be sped up, and that there would be some solutions offered following the announcement of the government's Budget 2024 at the end of May.



Photo top: Punanga Te Wao Kōhanga playground, Tangoio post cyclone Photo above: Punanga Te Wao Kōhanga Reo new playground at the new temporary site in Clive.

## Kōhanga Reo playground

Punanga Te Wao Te Kōhanga Reo building, facilities and land were also severely impacted by Cyclone Gabrielle, rendering the Tangoio site unsafe for our Kōhanga whānau.

Fortunately, a new temporary site for the Kōhanga was found at 16A School Road, Clive. However, there was insufficient funding for a new playground for our tamariki. So MTT was tasked with finding some funding to cover the costs of the playground. Thankfully, Te Puni Kōkiri was able to provide the \$44,000 (excluding GST) that was needed.

This fund was used to concrete and grass the play areas at the temporary Kōhanga Reo site. The Kōhanga was also able to purchase relocatable and interchangeable outdoor play equipment.

The site was blessed was blessed on 26 May and the Kōhanga reopened a month later on 26 June 2023 to happy tamariki, and even happier mātua!

## MTT Recovery team

Shortly after the cyclone, the MTT Trustees resolved to appoint Toihau, Tania Hopmans as Recovery Lead and Deputy Chair, Kelly May as Recovery Project Manager to lead the recovery initiatives on behalf of MTT. Hayley Lawrence was subsequently contracted to be the Recovery Analyst. The Recovery Team along with the MTT staff, Trustees and MTL Directors all contributed to the cyclone recovery efforts over the 2023-2024 financial year.

Work of the Recovery Team included:

- drafting of the Recovery Plan and presentation of the plan to the Hapū and local and regional councils
- partnering with the Tangoio Marae Trustees including reporting on the progress of negotiations
- meeting with Hapū members whose homes were affected by the Cyclone and arranging hui for Hapū members with the Crown and council officials
- liaising with sector and regional groups such as Te Kāhui Ōhanga (a collective of Hawke's Bay Post Settlement Governance Entities (PSGEs) and Taiwhenua) and the Matariki Governance Group (a collective of Hawke's Bay PSGEs and councils) on recovery issues
- negotiations about the Marae and papakāinga with the Crown taskforce including the Prime Minister, Ministers and officials from Te Arawhiti (Office for Māori Crown Relations), Cyclone Recovery Unit (of the Office of Prime Minister and Cabinet), The Treasury, Te Puni Kōkiri and the Crown's specialist advisors including architects, project manager and Crown Infrastructure Partners
- co-ordinating specialist advisors to support MTT's negotiations including an architect, quantity surveyor, project manager and lawyer as well as the Hawke's Bay Regional Recovery Agency and Hon Christopher Finlayson KC
- finding land, funding and suppliers for temporary cabins, negotiating funding and supply contracts, leases and licences to occupy and insurance, and overseeing the installation of the cabins
- making submissions on Category 3, policies for the buy-out of general land and draft Orders in Council relating to recovery
- applying for and securing funding for research projects related to the Taiao.

The Recovery Plan acknowledged that resourcing would be required to engage and lead initiatives for the recovery of our Hapū, Takiwā and communities. To that end, \$3.7m of funding was obtained to fund recovery initiatives.

# Kia Niwha Strong People

Building the capability (ability and knowledge) and capacity (resources and energy) of our people to achieve their potential.

**Niwha - to be resolute, fierce, bold.**



## Kāhui Kaumātua

Page 18



## Tautoko whānau - whānau support

Page 19



## Ngā hākinakina - sports teams

Page 20



## Te Pō Kiriata - Movie night

Page 21



## Te Ao Paratī - Splash Planet

Page 21



## Hunting Committee

Page 22





Photo: Whaea Whakiao Hopmans and Whaea Hinei Reti.  
Photographer: Madison King.

## Kāhui Kaumātua

During 2023-2024 the Kāhui Kaumātua continued to work on the cyclone recovery alongside MTT and the trustees of Tangoio Marae. “We focussed on restoring our taonga, caring for impacted whānau and supporting solutions for recovery,” says Kāhui Kaumātua Chair Matua Bevan Taylor.

The expertise and guidance of the Kāhui Kaumātua continues with the restoration of the taonga- tukutuku, kōwhaiwhai and whakairo from the whare tipuna- Punanga Te Wao.

Representatives from the Kāhui Kaumātua also led the blessing at the openings of both the Ellis Bridge and more recently the cabins at Te Kuaka (see page 13) for whānau impacted by the cyclone.

The Kāhui Kaumātua did manage to include two celebratory kaupapa. A Matariki lunch at the Napier RSA that included a joint birthday celebration for Whaea Whakiao Hopmans (84th) and Whaea Hinei Aomarama Reti (93rd). A tradition these whaea have upheld in recent years as they share their birthday on 13 July.

The Kāhui Kaumātua also enjoyed a Christmas get-together and singalong at the Clubs Hastings.

**Role:** The Kāhui Kaumātua provide advice and guidance to the MTT Trustees on matters of tikanga, reo, kawa and whakapapa of the Hapū, as per clause 5 of the MTT Trust Deed.

**Members:** The Kāhui Kaumātua members include: Matua Bevan Taylor (Chairperson), Joe Taylor and Matiu Eru and Whaea Whakiao Hopmans, Liz Taurima, Alice Taylor, Rosy Hiha, Ruby Spooner, Veronica Young, Yvonne (Whawha) Thomas.



Photo: (left to right) seated Whaea Hinei Reti, Lesley Lenden, Tania Hopmans, Charmaine Butler, Marewa King, Evelyn Ratima, Pereri King.  
Photographer: Hayley Lawrence.



## Tautoko whānau - whānau support



Left photo: Tohi Te Ururangi Mokoia Taurima-Thomas. Photographer: Charlotte Taurima-Thomas. Right photo: Amiria King-Utiera. Photographer: Madison King.

### Pēpi pēke - baby packs

MTT continued with the distribution of Pēpi Packs through 2023-2024. It is a way to support our hapū māmā and whānau of pēpi during their first six months as well as encouraging our whānau to register their pēpi.

*Nau mai ki te ao e ngā mokopuna o Tangoio!*

*Welcome to the world all the mokopuna of Tangoio!*

Modelling their Hapū kakahu are Tohi Te Ururangi Mokoia Taurima-Thomas (left), pēpi of proud parents Charlotte Taurima-Thomas and Tohi Te Ururangi Tapsell and Amiria King-Utiera (right) the new born pēpi of Madison King (who also worked with MTT) and Sam Utiera.

### Kakahu Kura - funding for school uniforms

In 2023-2024 MTT also supported whānau with a koha towards uniforms for tamariki starting school. During that time MTT had registrations for 31 tamariki who were starting school. There were 83 tamariki supported with \$7,431 contributed towards their school uniforms.

## Ngā tīma hākinakina - sports teams



Photo: (Left to right): Napier Boys player, Amy Reti, Taryn Taurima, Cyrus Nathan, Joeseeph Taurima, Corde King, Aria Taurima, Krystal Nathan, Lala Nathan. Photographer: Madison King.

## Pā whutuporo - touch rugby

In 2023 the Tangoio Whalers brought kaimahi and whānau together on the touch field. The Tangoio Whalers played in the social grade of the Taradale Touch Module at Tareha Reserve.

Playing in the social grade enabled all levels of skills to participate in the one team. It also meant that many of our tamariki were playing alongside their parents. The team and supporters play and support for fun, plus the bonus of spending time with new whānau.

Some of our rangatahi also played for Taku Manawa Touch (pictured below). The team often shared players across the fields. Games were won and lost, and the whanaungatanga on and off the field was enjoyed across three generations of whānau.

## Netipōro - netball

MTT also supported our indoor netball players this financial year through the Autumn and Winter leagues.





## Ngā Rā Whānau - whānau days

Hosting whānau events are an important kaupapa for whakawhanaungatanga – maintaining our whakapapa connections. They are times for whānau to (re)connect and maintain relationships and for some, meeting new whanaunga. Events like these are important for all generations, kaumātua, mātua, tamariki and mokopuna.

Whānau Days (or nights) are also a chance for MTT to host whānau and keep whānau connected to what MTT is doing and how whānau can be involved.



Photo: Whānau at Next Goal Wins movie. Photographer: Hayley Lawrence.

### Te Pō Kiriata - Movie Night

Last December, MTT hosted a movie night. Three generations of whānau filled the theatre to enjoy the movie 'Next Goal Wins'. A movie co-written, directed and produced by Aotearoa's own Taika Waititi, who also acted as the Samoan priest in the movie. All ages enjoyed the movie, including toddlers from 2 years old to our kuia at 93 years of age!



Photo: Tamariki at Splash Planet. Photographer: Hayley Lawrence.

## Te Ao Paratī Wai – Splash Planet

More than 180 whānau members enjoyed the 2024 Whānau Day at Splash Planet on Easter Sunday, 31 March. The day was full of games, giveaways, kai, laughter and kōrero. Some of the whānau feedback includes:

*“The thing I enjoyed most was seeing the amount of whānau there that was able to attend because of the Trust. The things my big kids enjoyed the most was the slides, and the things my babies enjoyed was the inside pool and the pizza”*

*“Spending time with the whānau and the smiles on the kids' faces. They really enjoyed their day, they still talk about it now.”*



## Hunting Committee

Hunting Committee Chair, Darrin Kihi said following Cyclone Gabrielle the club did not have access to the forests for much of the year. "While that may not have been great news for forestry, it was great news for hunting," says Darrin, because there was time for the hunting stock to increase.

Darrin recounts that in 2023 there were eight hunts in a three month period and three hunts leading into Christmas 2023. All of which were to provide for whānau and Hapū in need of kai.

The Hunting Committee has closed the block at Esk Forest. This block Darrin refers to as the 'tangi block'. It is whenua solely to provide for whānau during times of tangihanga. It is also whenua dedicated to training whānau and the next generations.

Darrin talks about the importance of the Hunting Committee in teaching:

- whānau hunting, particularly, the next generations- Darrin started hunting at five years of age and raised his own son, Riki as a hunter and by 15 years of age, Riki 'was fully taught'. Now Darrin's moko are being raised as hunters
- how to utilise what we have on our whenua through tikanga and expertise handed down through the generations
- whānau and Hapū to learn with each other, on their own whenua, their Hapū mātauranga about being self sufficient and providing for each other
- reciprocity of providing for whānau, and giving back to our people and Hapū.

Out of the bush, Darrin has also been teaching whānau how to prepare and cook wild kai. He laughs as he recalls looking to see who is in the whare kai, and how this determines how he prepares and cooks meat for them to enjoy.

Now the Chair's role is to see that the other members of the Hunting Committee uphold tikanga and the rules of hunting. Darrin says, "The whenua is forever and it is up to the next generations to keep the same standards or better them."

**Role:** The Hunting Committee formed in December 2020, to provide leadership, education and training to whānau keen to hunt safely and responsibly. The committee works in partnership with the Esk Forest to deliver a hunting permit process for whānau during the Esk Forest hunt season each year.

**Members:** Darrin Kihi (Chair), Tirama Taane, Tyson Waina and Nevada Nathan.



Photo: (left to right): Colton Sherriff, Phoenix Rangihuna, Reagan Sherriff. Photographer: Darrin Kihi



Photo: Makere Kihi with piglet. Photographer: Darrin Kihi.

## Kia Rawaka Strong Hapū Economy

Building our Hapū economy to provide the resources we need to plan and action our dreams and goals over the relevant time.



**MTL update**  
Page 24



*Heeni Taane at the Blue Lake, Opouahi Station*



# Pūrongo Maungaharuru-Tangitū Limited

## MTL Chair Report

This year is best described as one in which Maungaharuru-Tangitū Limited (MTL) successfully focused on recovery and reset following last year's significant event – Cyclone Gabrielle.

### Opouahi Station

During the year, the MTL Board and MTT Trustees reflected on the mixed-use strategy that had been developed for Opouahi Station taking into consideration the impact of Cyclone Gabrielle on the farm and the imminent exit by Pamū on 30 June 2023. It was agreed to pause the forestry aspect of the mixed-use strategy until various government and forestry working group reports were completed so we could consider those as part of our decision making at a later date.

Notwithstanding the challenging pastoral farm environment, MTL was successful in concluding a 15 year lease with a neighbouring farmer for the majority of Opouahi (approximately 1,350 hectares). MTL and MTT have an aspirational view to be in an operational and financial position to farm the Station ourselves following the expiry of this lease. A short term lease is being negotiated with another farmer for the remainder of the farm.

### Esk Forest

Esk Forest whenua returns (hand-backs) continued as usual. To date approximately 33% of Esk Forest has been returned from Pan Pac Forest Products Limited, and almost all of this has been incorporated into our forestry joint venture with Rayonier Matariki, the Kaiwaka JV.

Under that joint venture, the land that is handed back is replanted in forestry and MTT will share in the stumpage in the years to come. Areas such as the Headquarters site were not included into the joint venture but instead have been leased to various tenants including Fire and Emergency New Zealand to supplement our cash returns from the land.

Cash returns of \$252k were earned this financial year from the remaining forest leased to Pan Pac. These returns will continue to reduce over time due to the hand-backs. In line with the shared stumpage model, cash returns from the Kaiwaka JV are not received until the trees are harvested, with MTT estimated to receive approximately 35.8% of the post-harvest revenue. This shared stumpage for MTT is currently valued at almost \$2.2m. This value is based on the current age of the trees and will increase in value as the trees mature.



Opouahi Station.

Also, through significant effort, including the hard work of our JV partner Rayonier Matariki and lessee Pan Pac, damaged tracks have been repaired and in the case of the Kaiwaka JV, lost trees have been replanted. So we are pleased to report that last year's impairment (reduction in value of the Esk Forest land) due to Cyclone Gabrielle has been reversed, permitting \$1.2m to be added back to the value of the Esk Forest land.

### Commercial properties

Our two high-quality commercial properties are operating well. Downer is our tenant at 5 Valor Drive in Palmerston North. The property was purchased in late 2020 for \$5.8m and currently earns a per annum cash return of \$371k, or 6.35%. The Department of Corrections is the tenant of our second commercial property at 22 Tironui Road, Takanini, Auckland. The property was purchased in early 2022 for \$6.2m and currently earns a per annum cash return of \$483k, or 7.84%. The Department of Corrections has renewed their lease for a further term. We are continuing to work hard to better understand the specific requirements for Corrections regarding security, secure off street carparking, staff lunchroom extensions and expanded community work areas. We expect to make further investment in the property in return for securing a longer term lease agreement with Corrections.

Our smaller commercial investment at 11 Allen Road, Pākōwhai, Hastings was purchased in October 2022 for \$2.5m. The property was significantly damaged during Cyclone Gabrielle however one tenant, Landscape Supplies, returned to site following weeks of clean up and recommenced trading during this financial year. Whilst the Board considered the property with one tenant but



significant untenanted land still had some upside, it felt the time and resource required to generate this upside would be better spent elsewhere.

Accordingly, MTL received the proceeds of the material damage insurance claim and sold the property in February 2024 for a small capital gain. Before I finish my commentary on real property assets, the Board would be remiss if we did not acknowledge funders who provided grants to support the recovery of those assets. Particularly, Hawke's Bay Regional Council and Te Puni Kōkiri for sediment and debris management.

## Managed funds

The managed funds portfolio comprises Milford Asset Management, Mint Asset Management, and private equity via two separate Continuity Capital funds. The Mint and Milford funds are valued at \$4.2m and Continuity Capital funds are valued at \$3.0m. The total return for the portfolio for the year is \$465k, or 6.47%.

The portfolio has rebounded from last year's minor negative return but the markets remain volatile because of many factors including uncertainty around the timing of Central Bank tightening, technology stock overvaluation fears, oil oversupply concerns, and the Israel-Palestine conflict and continuing war in Ukraine.

Milford and Mint are diversified fund portfolios that are expected to generate the returns required under MTT's Statement of Investment Policy and Objectives (SIPO) over their investment horizon. Private equity continues to deliver our strongest returns. Continuity Capital #2 fund continues to return funds with an expected return of 17.9% per annum since investment.

Further investments in Continuity Capital #6 fund were made during the year. Realised returns from our Continuity Capital #6 fund investments (up to the committed capital of \$3.0m) are still 4- 6 years away. The Board is cognisant that prudent additional investment in private equity funds is an important part of a diversified investment portfolio and necessary to meet portfolio returns under the SIPO.

## Summary

The investment portfolio again delivered on the target of generating \$1.6m in cash income, to support the operations of MTT. Overall, the Board is delighted that MTL has a good level of cash, and was able to reverse some of last year's impairment of assets (due to Cyclone Gabrielle) and for the first time is able to record its share of Kaiwaka JV stumpage value.



Anthony Bow

The resulting increase in Total Equity of \$7.2m in a difficult year is very pleasing. Looking forward to the 2024-2025 year, the Board plans to complete a 10-year review and refresh of the SIPO in consultation with the MTT Trustees, and to commence delivering on the agreed objectives. Notwithstanding the difficult post Cyclone Gabrielle environment.

I felt honoured to be entrusted with stepping into the Chair role. The Board is also indebted to Charmaine Butler for stepping in as a Director whilst we sought a suitable replacement. In January, we welcomed Fiona Carrick to the Board who brings significant pastoral governance expertise to MTL.

Finally, I would like to thank fellow director Tom Manaena for his guidance and support, and former Acting CEO Liz Munroe and Commercial Manager Mark Kilmister, financial advisor Campbell Furlong from PwC, grants administrator Erica Goldsack and Board secretary Linda McCully for their hard work and dedication during the year.

We have achieved much during the year to steady the waka but there is still a lot of mahi to do in the 2024-2025 financial year and beyond. However, with a great team in place we will work hard to meet our commercial challenges and endeavour to continue delivering good results on behalf of the Hapū.

Ngā manaakitanga,

**Anthony Bow Chairperson**

Maungaharuru-Tangitū Limited (MTL)

# He Kāinga Taurikura

## A Treasured Environment

---

Caring for and protecting our environment. Kaitiakitanga-building our understanding, connectedness and involvement with our environment.



**Kia haruru anō a Maungaharuru**  
Page 27



**Consents update**  
Page 28



**Whakatipu Kaitiaki**  
Page 29



**Manu Tāiko**  
Page 29



**Fish Passage with Niwa**  
Page 31



**Te Rerenga Kārearea**  
Page 32



Photo: Tītī chick at Maungaharuru, Te Papa Atawhai (Department of Conservation)



Left to right: Vet, Cathy Mitchell feeding a tītī chick while a 12 year old Kahurangi Burkitt maintains a firm hold on the chick, 19 March 2016. Photographer: Tania Hopmans.

### Kia haruru anō a Maungaharuru

Since 2011, MTT and our Hapū have been involved in the Poutiri Ao ō Tāne project. The aim of that project is to embrace the sacred knowledge of Tāne and to bring back the mauri of birdlife to Maungaharuru. It is said that the mountain used to rumble and roar in the morning and evening with the flight of birds.

### 2024 tītī breeding season

A key part of the Poutiri Ao ō Tāne project was the translocation of taonga species of birds such as kākā and kākārīki to replenish or re-establish those populations that were small or lost from Maungaharuru. One particularly ambitious goal was the translocation of tītī chicks to a predator-free site high on Maungaharuru in the hope that they would fledge and return in future years to breed. So we are delighted to report that some of those chicks have returned as adult birds to Maungaharuru and the 2023-2024 breeding season was very successful.

In total, four tītī chicks were hatched from four eggs. The chicks then fledged from Maungaharuru between January and March 2024. Hopefully we will see the chicks that fledged return to Maungaharuru with a mate to breed in a few years time. Some of them may be at sea for six years or more before returning.

Te Papa Atawhai (Department of Conservation) is one of our project partners. They monitor the site for activity and during this breeding season detected the first unbanded adult tītī. This discovery was particularly noteworthy because it meant that our colony is growing beyond the birds that we translocated to the site. Either a relocated tītī found a mate out at sea and brought it back, or a “random” tītī was attracted to our new colony forming and decided to stay.

Another fun discovery was the return of an adult tītī that had been translocated to Maungaharuru as a chick in 2016.

One of our whānau members, Kahurangi Burkitt helped to feed this chick at that time and named it ‘Kahu22’. Kahurangi was 12 years old then and is 20 now... how time and tītī fly! As you can see, once these birds fledge and fly overseas it can be a long time before they return to breed. That’s okay, we’ll be here waiting to welcome them home.





## Consent Updates

Between 1 April 2023 and 31 March 2024:

- Hawke’s Bay Regional Council received 405 resource consent applications
- Hastings District Council received 345 resource consent applications
- Napier City Council received 388 resource consent applications.

Of these applications, 50 were in our Takiwā and were reviewed by staff for implications on Hapū values. MTT staff followed up with the relevant council or applicant and for 34 applications, no further action was required.

MTT has ongoing engagement with a couple of applicants including Hastings District Council which is seeking the renewal of a consent for the discharge of wastewater at Waipātiki Beach and there is also an application for discharge from Landcorp Farming Limited (Pāmu) for the Ahuriri Station, which has been ongoing since 2017.

Cultural Impact Assessments (CIA)	April 2023 – March 2024	April 2022 - March 2023
Commissioned	3	3
Completed	2	2
Ongoing Action: HDC Waipātiki wastewater discharge & Landcorp Farming Ltd, Ahuriri Station discharge.	2	2



## Whakatipu Kaitiaki

*Toitū te marae a Tāne, toitū te marae a Tangaroa, toitū te whenua  
Care for the domains of Tāne and Tangaroa, and the land will sustain you*

Our Whakatipu Kaitiaki programme is about- raising future generations of kaitiaki taiao. During the 2023-2024 year, two Whakatipu Kaitiaki wānanga were held.

One of the first wānanga was 'Ki Uta- Ngahere Experience' and was held on 18 December 2023, with 12 rangatahi and six kaimahi. They travelled to Opouahi and Boundary Stream for their experience in the ngahere and walked the Tūmanako loop track.

During their time in the ngahere, rangatahi learnt their pūrākau and their connections to the ngahere and each other, building a stronger connection to their tūrangawaewae.

They also learnt about trapping- the different traps used on their maunga, what pests they are targeting and why it is important to have these traps in the ngahere.

As well as learning about animal pests they learnt about foreign plants that were also pests to the native ngahere. The rangatahi ended the day with a relaxing soak at Ocean Spa.

As a follow on from 'Ki Uta', the rangatahi of Whakatipu Kaitiaki were offered the opportunity to:

- attend the release of the rehabilitated pāteke (Brown Teal duck),
- visit the recently hatched tītī chicks on Maungaharuru,
- participate in the bird count undertaken by Te Papa Atawhai; and,
- stay the night in one of Te Papa Atawhai's huts.

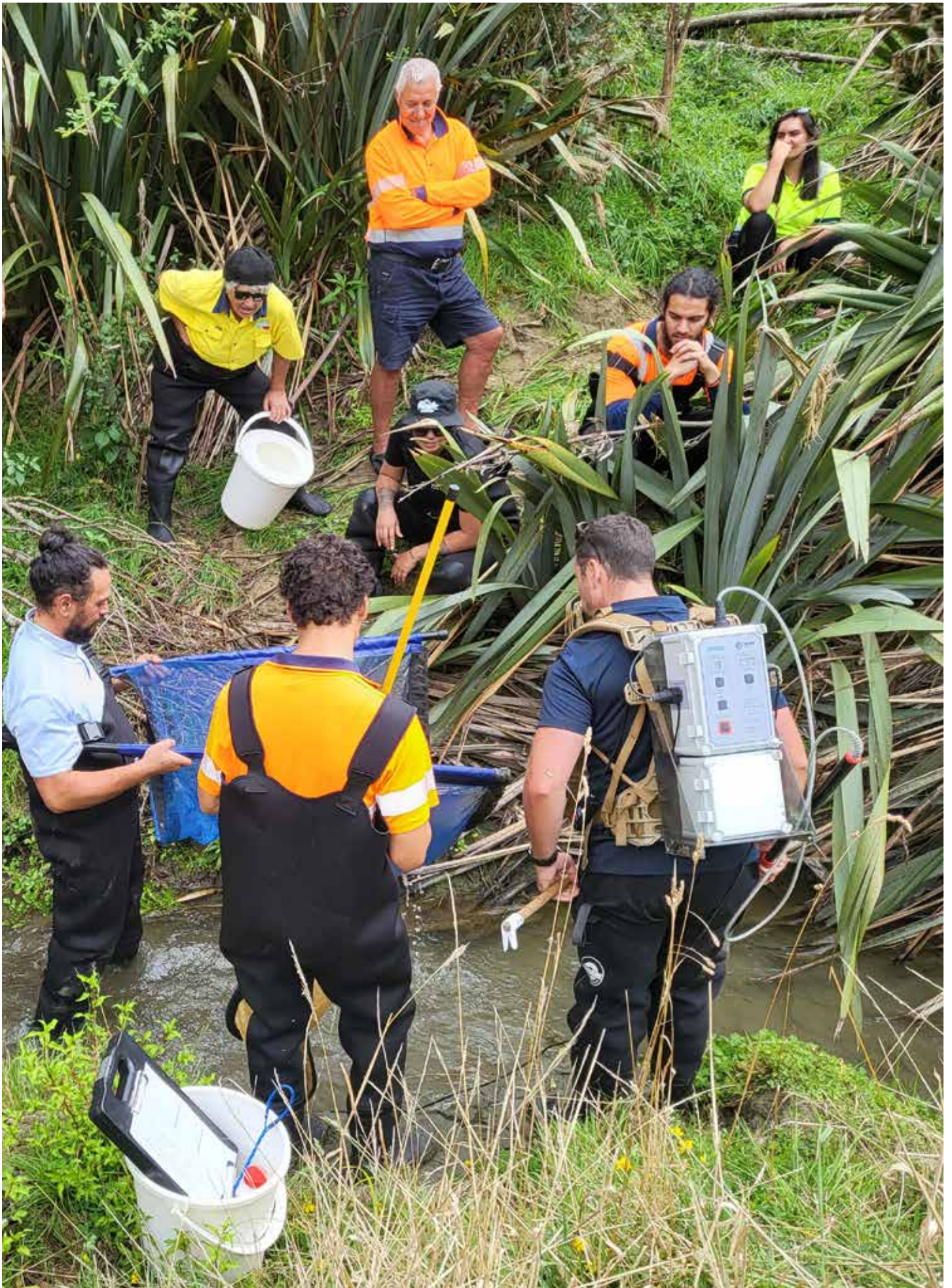
## Manu Tāiko

Our Manu Tāiko team has continued their work to protect and enhance our taiao. In the 2023- 2024 year, the team has achieved:

- 8,500 plants, trees or stems planted
- 43,675 plants were planted in riparian areas
- 250 ha of whenua treated for possums
- 104 ha of whenua treated for weeds
- the removal of 2,800m of overgrown tree limbs and scrub
- 34,670 metres of tracks maintained







*Photo: On site training. Photographer: Erica Goldsack*



## Fish passage project with Taihoro Nukurangi (NIWA)

In Aotearoa approximately 72% of our freshwater fish species are threatened or in decline. Aside from the degradation of habitats, one of the most significant causes of their decline is the construction of structures such as culverts and weirs in streams that may prevent fish from accessing important habitats.

The National Policy Statement for Freshwater Management (NPS-FM) 2020 and National Environmental Standards for Freshwater 2020 have set out new requirements for managing fish passage in Aotearoa.

The Policy requires regional authorities such as the Hawke's Bay Regional Council to identify existing structures in streams within the region, evaluate the risk to fish passage, prioritise and remediate structures that impede fish passage and monitor and evaluate the performance of this remediation.

The council is required to co-develop regional fish passage actions plans (FRAPs) alongside mana whenua, such as our Hapū.

Under this project six Hapū members are learning to prepare fish passage action plans. This training includes all aspects of fish passage management, like instream structures, fish community assessments, prioritisation processes, identification of solutions, site-specific

remediation designs, and monitoring the effectiveness of remediated structures.

In November and December 2023 scientists from the Taihoro Nukurangi (National Institute of Water and Atmospheric Research / NIWA) trained MTT kaimahi about how to complete the fish passage assessment using their NIWA app. Then in February 2024 culvert assessments were undertaken. This included electric fishing, setting g-minnows and hīnaki to collect data on the freshwater species within the Takiwā.

The species found at the Opouahi Wilderness Base through electric fishing included tuna (longfin eel) and kōura (fresh water crayfish). At Te Ngarue with hīnaki, kōura (freshwater shrimp), tuna (longfin eel) and inanga were found. At the Tangoio Forest Pan Pac waterway with the setting of 30 g-minnows, inanga were also found.

In April 2024 twenty fish passage assessments were completed in the Esk Forest, Opouahi Station, Opouahi Wilderness Base, and at the awa Te Ngarue, Pākuratahi Valley and Rangīātaahua. Additionally, three freshwater restoration projects were completed. The projects included the removal of silt and pest weed at Te Ngarue culvert and silt and debris removal at Pākuratahi Valley.



Photo: kōura



Photo: tuna.

## Te Rerenga Kārearea

We are excited to see some progress with this project to erect i-pou in our Takiwā to highlight the importance of our wāhi taonga and the kōrero about them. The name of the project and the i-pou are inspired by Te Pao composed by Justin Puna around the time of our Treaty settlement. Te Pao tells the story of the kārearea flying over our Takiwā and observing sites that are significant to our Hapū including our maunga, awa, roto, mahinga kai, pā and Marae.

This project enables us to share the kōrero tuku iho from our kaumātua about our wāhi taonga with our Hapū and future generations of kaitiaki as well as the wider community in new and interesting ways.

The i-pou will signal to visitors that there is information about the site that can be accessed using their smartphones. Users will be able to hear and see the kōrero through augmented reality. Augmented reality is an interactive experience that combines what you can see in the real world with computer-generated 3D images. An example is standing at Lake Opouahi and looking at it through your smartphone and hearing the kōrero about the tuna and seeing images of them moving on the lake.

We have contracted ARA Journeys, a Māori owned business to design the augmented reality segments and other aspects of the experience and that work is well underway. The location of the i-pou are still to be finalised but are expected to include:

1. Boundary Stream Scenic Reserve and the kōrero about the mauri of the manu on Maungaharuru and how the maunga was named
2. Opouahi Science Reserve where there are unique tuna kaitiaki
3. Te Pōhue and the feats of Māui catching his fish and turning the waka of Ngārangikataka to stone
4. Lakes Tūtira and Waikōpiro and the kōrero about Tiwaewae and Ngāti Kurumōkihi
5. Waipātiki Beach and the pact between the chiefs Marangatūhetaua and Te Ruruku
6. Tangoio Beach and our kaitiaki, Tangitū.

We look forward to completing this mahi and launching the i-pou for our whānau to enjoy in the coming months.



Photo: Kārearea (NZ falcon), Department of Conservation.

## Te Pao

### Tū ana te kārearea i te keokeonga o

Tarapōnui-a-Kawhea  
Ka titiro iho ia ki Tītī-a-Okura ki te wāhi ko Tauwhare  
Papauma e  
I titia ai e tō Tūpai tokotoko i mau ai te mauri o te manu  
*Haruru ana te maunga rā*

### Rere ana te kārearea

Ka titiro whakataui iho ia ki ngā awa  
Waikari, Waitaha, Anaura e ahu mai nei i te mātāpuna  
kai *Maungaharuru e*

Putā atu ana te wai o Waikari i Te Putā a Hinetonga ki  
Ōmoko  
*Pātōtō ki te ata, pātōtō ki te pō*

Ka rere whakatetonga, kite iho ana i a Waiohingānga  
Tahuri atu rā te rāwhiti ki  
*Te Ngarue, he tipua, he taniwha*

### Tahuri mai ana ki ngā roto

Te Pōhue, Opouahi he wāhi tapu, he roto tuna  
Orākai, Waikōpiro ko ngā kanohi o Tūtira e  
*Tūtira he pātaka kai, oranga ngākau, oranga tangata*

### Kotahi atu ia ki ngā tai o

Moeangiāngi, Arapawanui, Waipātiki, Punakērua,  
Tangoio  
*Tangitū he tohorā he kaitiaki e*  
Kite iho ngā toka Ōmoko, Urukaraka, Whakapao, Ngaio-  
iti, Whakatapatu  
Kōtuku, Hinepare  
Makaro, Te Ahuaruhe, Pānia e

### Tau atu ana ia ki

Punanga te Wao, te whakairinga o te kupu, te  
whakapiringa o te tangata o  
*Marangatūhetaua, Kurumōkihi, Te Ruruku,*  
*Ngāi Tauira e*

### Hoki atu ana te kārearea

e hia kē ngā pā kua kitea  
*Ko tō rātou pāi kai ngā rekereke*  
*Maungaharuru ki Tangitū, Keteketerau ki Waikari*  
*Ka kati a Maungaharuru, ka tuwhera a Tangitū*  
*Ka kati a Tangitū, ka tuwhera a Maungaharuru e*

### The kārearea stands upon the highest point of

Tarapōnui-a-Kawhea  
and gazes upon the place aptly named Tītī-a-Okura to  
the area of Tauwhare Papauma  
The place where Tūpai pierced his stick, which held the  
life force of birds and *the mountain reverberated*

### The kārearea takes flight

looking with intent upon the tributaries of  
Waikari, Waitaha and Anaura whose headwaters are in  
*Maungaharuru*

The waters of Waikari flow out through the river mouth  
Te Putā a Hinetonga to the Ōmoko reef, whence our  
proverbial saying  
*Pātōtō ki te ata, pātōtō ki te pō*

Taking flight southwards, he sets his eyes upon the  
Waiohingānga  
turning to the east he observes Te Ngarue, a denizen,  
a custodian

### Now it focuses its attention to the lakes

Te Pōhue, Opouahi a most hallowed place, a lake  
profuse with tuna Orākai and Waikōpiro, the eyes of  
Tūtira  
*Tūtira, a place of sustenance, well-being, life*

### He now heads straight for the shores of

Moeangiāngi, Arapawanui, Waipātiki, Punakērua,  
Tangoio  
*Tangitū a whale, a guardian*  
He looks below and surveys the reefs of Ōmoko,  
Urukaraka, Whakapao, Ngaio-iti, Whakatapatu, Kōtuku,  
Hinepare, Makaro, Te Ahuaruhe, Pānia

### He now settles on

Punanga te Wao, the place where our history is held,  
where the progenies of  
*Marangatūhetaua, Kurumōkihi, Te Ruruku and Ngāi*  
*Tauira congregate*

### The kārearea returns

Copious amounts of pā have been spotted, whence the  
saying *‘Their pā were in their feet’* comes from  
*From the great mountain Maungaharuru to the*  
*shoreline of Tangitū*  
*from Keteketerau to the pristine waters of Waikari*  
*we call home*  
*When the season upon Maungaharuru closes, Tangitū*  
*welcomes us*  
*When the season upon Tangitū comes to a conclusion,*  
*Maungaharuru welcomes us*



# He Waka Kairangatira A Great Organisation

---

Operating an effective organisational structure with entities that understand their purpose and role. Delivering great results for our people.

**Kairangatira – to be admirable, excellent, distinguished.**

## **Maungaharuru-Tangitū Trust**

Page 35

## **MTT representatives on external committees**

Page 35

## **Ngā Komiti**

Page 36

## **Maungaharuru-Tangitū Limited**

Page 36



*Te Poari - MTT Board members (left to right): Tania Hopmans-Toihau, Kelly May -Deputy Chair and MTT Trustees Robbie Paul, Charmaine Butler and Coralee Thompson at the MTT AGM 2023. Not shown in this photo are Trustees Mara Andrews and George Puna. Photographer: Richard Brimer.*

## Maungaharuru-Tangitū Trust (MTT)

Tania Hopmans – Toihau | Chair

Kelly May – Deputy Chair

Charmaine Butler – Trustee

Coralee Thompson – Trustee

George Puna – Trustee

Mara Andrews – Trustee

Robbie Paul – Trustee

### MTT representatives on external committees

Charmaine Butler

- member, Takoto Noa Māori Standing committee, Hastings District Council
- Trustee, Pan Pac Environmental Trust

Cliff Tarau

- member, Mana Whenua Steering Committee, Te Herenga Waka o Ahuriri (Port Napier)

Coralee Thompson

- member, Ngā Mānukanuka o te Iwi (Māori Committee), Napier City Council

Kelly May

- member, Pan Pac Independent Monitoring Review Group

Mara Andrews

- member, Hastings & Napier Future Development Strategy Joint Committee (Tamatea Pōkai Whenua Trust, Mana Ahuriri Trust, MTT, Hawke’s Bay Regional Council, Hastings District Council, Napier City Council)

Robbie Paul

- member, Joint Committee on Climate Action (Hawke’s Bay PSGEs and Taiwhenua, Hawke’s Bay Regional Council, Central Hawke’s Bay District Council, Hastings District Council, Napier City Council & Wairoa District Council)

Tania Hopmans

- member, Te Kāhui Ōhanga o Tākitimu (all Hawke’s Bay PSGEs and Taiwhenua)
- member, Matariki Governance Group (including representatives from Hawke’s Bay PSGEs and councils)
- Co-chair, Hawke’s Bay Regional Council Regional Planning Committee
- member, Clifton to Tangoio Coastal Hazards Strategy Joint Committee (Tamatea Pōkai Whenua Trust, Mana Ahuriri Trust, MTT, Hawke’s Bay Regional Council, Hastings District Council, Napier City Council)
- member, Hastings & Napier Future Development Strategy Joint Committee (Tamatea Pōkai Whenua Trust, Mana Ahuriri Trust, MTT, Hawke’s Bay Regional Council, Hastings District Council, Napier City Council)

## Ngā Komiti | Committees

### Audit and Risk Komiti (ARK)

Jon Nichols – Chairperson

Charmaine Butler – Trustee

Coralee Thompson – Trustee

George Puna – Trustee

Kelly May – Trustee

### HR Komiti

Tania Hopmans – Toihau | Chair

Kelly May – Trustee

Mara Andrews – Trustee

### Kāhui Kaumātua

Bevan Taylor (Chairperson)

Alice Taylor

Joe Taylor

Matiu Eru

Rosy Hiha

Ruby Spooner

Whakiao Hopmans

Veronica Young

Yvonne (Whawha) Thomas

Liz Taurima

### Marae Development Committee (MDC)

(which has not met since Cyclone Gabrielle)

Tania Hopmans – Co-Chairperson and MTT Chairperson

Awhina Taurima – Punanga Te Wao Kōhanga Reo

Bevan Taylor – Chairperson Kāhui Kaumātua

Diana Taunoa – Tangoio Marae Trustee

Elaine Cook – Whānau member, Janice Stevens – Tangoio Marae Trustee

Joe Taylor – Co-opted whānau member

Robbie Paul – MTT Trustee

Ruby Wells – Whānau member

Sabre Puna – Co-opted whānau member

## Maungaharuru-Tangitū Limited (MTL)

Anthony Bow – Chairperson, Tom Manaena – Director, Charmaine Butler - interim Director, Campbell Furlong - Partner, PwC & Chief Financial Officer for the MTT Group, Fiona Carrick, new Director and Geoff Hamilton – former Chairperson.



Photo (left to right): Anthony Bow – Chairperson, Tom Manaena – Director, Charmaine Butler - interim Director, Campbell Furlong – Partner, PwC & Chief Financial Officer for the MTT Group. Not pictured: Fiona Carrick, new Director.





## **Rautaki ā-Tau 2023 – 2024** Annual Plan Results

---

## **Rautaki ā-Tau 2024 – 2025** Annual Plan



# Rautaki ā-Tau 2023 – 2024

## Annual Plan 1 April 2023 – 31 March 2024; Results

### Kia Manawaroa, Maranga e Tū – Recovery and Resilience

Activity	Description	Results
<b>Maungaharuru-Tangitū Recovery Plan Programme</b>	Develop, promote and support MTT Locality Plan with key initiatives- Marae, housing, resilient land for papakāinga, strengthen health and wellbeing of Hapū communities, resilient infrastructure, primary sector and emergency preparedness.	Negotiations were undertaken with the Crown about a support package for Tangoio Marae and affected residents with Ministerial decisions expected post Budget 30 May 2024. Land and funding for temporary cabins for affected whānau were secured and cabins installed. Funding was obtained for a new playground for Punanga Te Wao Te Kōhanga Reo, whānau outings, several Taiao research initiatives and the costs of the Recovery Team. Engagement has begun with the Transport Recovery East Coast alliance about repairs and resilience of the State Highways and railway. More work is needed on recovery initiatives for the primary sector and emergency preparedness.

### Kia Niwha – Strong People

Activity	Description	Results
<b>Engaging with and report to Hapū and whānau</b>	Ensure effective engagement with registered Hapū members across all demographics. Engage with whānau to share their ideas and feedback and to express what is of interest to them. Demonstrate regular communication using multiple channels to reach whānau of all ages and locations.	We held: <ul style="list-style-type: none"> <li>• three Hui ā-Hapū</li> <li>• two whānau events- Movie Night and Splash Planet</li> <li>• two rangatahi wānanga- Whakatipu Kaitiaki events</li> <li>• two Kāhui Kaumātua events</li> </ul> Survey feedback provided by whānau was positive, encouraging and appreciative.
<b>Continue support for the Hunting Club</b>	Provide administration and policy support to enable multi-generational learnings, allow whānau to be fed from the whenua, provide kai for manaakitanga and to express kaitiakitanga safely and in accordance with tikanga.	During the cyclone recovery period that impacted access to forestry, the Hunting Club were able to: <ul style="list-style-type: none"> <li>• have eight hunts in a three month period</li> <li>• three hunts leading into Christmas 2023 to provide kai for whānau in need.</li> </ul>



## Kia Rirā Te Pā Kai Ngā Rekereke – Strong Culture, Reo & Marae

Activity	Description	Results
<b>Whakatipu Kaitiaki programme</b>	Successfully facilitate three rangatahi (12-18 years) wānanga to build cultural capabilities and be united by them through te taiao learning experiences. The programme is available to all rangatahi of Ahuriri Hapū. (Funded by Pan Pac Environmental Trust).	Whakatipu Kaitiaki held two rangatahi wānanga Ki Uta and Ki Tai, working with our indigenous taonga species in the ngāhere and in the wai. The third wānanga will be held during 2024-2025.
<b>Kia haruru anō te reo Māori - our language will reverberate again</b>	Support whānau participation in wānanga reo with the numbers participating increasing exponentially, including connecting with whānau online who are living outside of the Takiwā / Hawke's Bay.	Unfortunately, our Te Mātāwai funding application was unsuccessful and no wānanga reo were hosted. MTT is exploring other funding options for wānanga reo in 2024- 2025.
<b>Kōrero tuku iho - archiving historical information</b>	Collate, reference and archive the data we have about whakapapa and kōrero tuku iho so that they are protected, coherent and readily accessible, providing a resource that benefits current and future generations.	Work on this project was deferred. MTT is looking at ways to resource this project in 2024- 2025.
<b>Te Rerenga Kārearea project</b>	Design and erect one trial i-Pou near wāhi taonga to share information kōrero, challenges and activities relating to those taonga (funded by Te Urungi: Innovating Aotearoa).	Progress with this project was delayed, however ARA Journeys has been contracted to create augmented reality segments at each of the pou locations. The pou are to be designed, erected and activated by 30 September 2024.

## Kia Rawaka – Strong Hapū Economy

Activity	Description	Results
<b>Investing and growing the assets</b>	Ensure that the investment assets are invested responsibly, provide a reasonable return and grow at a rate corresponding to the growth of the Hapū and MTT's need to provide for the needs and activities of the Hapū as provided in the MTT's SIPO.	Good results were achieved, refer to the MTL Chairperson's report on page 24
<b>Sourcing funding</b>	Develop and implement a Funding Policy and Procedures (including budget template) to assist the MTT Board to prioritise projects and support operations to seek funding opportunities.	This project has been deferred to 2024 -2025, however a significant amount of funding was obtained during 2023-2024.

## He Kāinga Taurikura – A Treasured Environment

Activity	Description	Results
<b>Managing resource consents and cultural impact assessments</b>	Actively participate in the RMA consents process within statutory time frames to protect Hapū cultural and environmental interests. Ensure MTT is apprised of potential developments and consent applications, in dialogue with developers and consenting authorities and negative impacts are avoided or mitigated and positive impacts enhanced at no cost to MTT. Inform Hapū of the work that MTT is undertaking. Ensure developers and consenting authorities are aware of MTT advocating for the rights and interests of the Hapū in the taiao.	Achieved. For more details see Consents Update page 28.
<b>Finalising Hapū Environmental Management Plan</b>	Position statements on wāhi taonga, wai, Tangitū, and Maungaharuru are researched, consulted and documented in the HEMP. The draft HEMP is consulted with Hapū and proposed users and provides clear guidance for Hapū, developers, local authorities and central government about the Hapū vision, values, issues, preferred solutions and bottom lines for various aspects of the taiao.	This project has been deferred and will be progressed during 2024- 2025, with funding support from the Hawke’s Bay Regional Council.
<b>Progressing our application under the Takutai Moana (Marine and Coastal Area) Act</b>	Take necessary steps to protect the rights and interests of the hapū within the takutai moana mai Waitaha ki Keteketerau and Pānia reef.	The High Court issued decisions in 2021 and 2023 on MTT’s application on behalf of the Hapū for customary marine title and protected customary rights. MTT (and other applicant hapū) appealed some of the High Court’s decisions to the Court of Appeal. A date for hearing that appeal will not be set until another decision from the Supreme Court is received (relating to applications by Whakatōhea). That means our appeal may not be heard till sometime in 2026.
<b>He Kāinga Taurikura o Tangitū project</b>	Exercise kaitiakitanga by completing baseline research of the kuku reef and develop a Maungaharuru-Tangitū cultural assessment framework that draws on mātauranga-ā-hapū, technology and practical whānau know how.	Achieved. Research report has been completed and its findings were presented at the ‘Pāpaki Tū Ana Ngā Tai’ symposium in Tauranga in April 2024. Information about the project and the research will be shared with the whānau during 2024 - 2025.
<b>Manu Tāiko - kia eke te Ngarue! Kia eke Arapawanui!</b>	To exercise kaitiakitanga by undertaking targeted restoration and cultural monitoring activities (mai Maungaharuru ki Tangitū), which is achieved by Manu Tāiko and whānau.	Achieved. For more details see Manu Tāiko page 29.
<b>Progressing Hapū input into the Kotahi Plan</b>	Actively protect the rights and interests of the Hapū in the new Hawke’s Bay Regional Council Kotahi Plan (one plan to replace all existing HBRC resource management plans). Identify the vision, values, issues and not negotiable positions for key awa and takutai moana within the Takiwā. Consult with the Hapū and present to the Hawke’s Bay Regional Council for inclusion in the Kotahi Plan.	This project was delayed and will be progressed during 2024-2025 to align with the Hawke’s Bay Regional Council’s work programme for its Kotahi Plan, and with funding support from the council.

<b>Protecting Wāhi Taonga</b>	Compile comprehensive information (kōrero, whakapapa, maps, archaeological, historical, photographic) for 15 wāhi taonga for protection under the Napier City Council and Hastings District Council plans.	This project was delayed, however work on sites within the Napier City Council district was undertaken and will be progressed as part of a collaborative effort between the hapū of Ahuriri, including MTT and the Council during 2024-2025.
-------------------------------	--	--

## He Waka Kairangatira – MTT Group is a Great Organisation

Activity	Description	Results
<b>Engaging our Kāhui Kaumātua and kaumātua whānui</b>	Ensure that the Kāhui Kaumātua is supported to do its mahi (advise on whakapapa, tikanga, reo and kaupapa), provide the Kāhui Kaumātua assistance to organise and engage our wider kaumātua in enjoyable events.	Fewer Kāhui Kāumatua hui were held as kaumātua worked to support the cyclone recovery efforts. Kāhui Kaumātua leadership supported the restoration of Marae taonga, the negotiations with the Crown about a support package for the marae negotiations, karakia for the opening of Ellis Bridge and Te Kuaka cabins. The kaumātua enjoyed two events celebrating Matariki and Christmas.
<b>Whakawhanaungatanga - registering our whānau</b>	Identify and register all eligible whānau and have up-to-date contact details about them to ensure ongoing connection, communication and accountability to our whānau.	Registrations have increased from 6,231 registered members at 1 January 2023 to 6,597 at 31 March 2024, an increase of 366 registrations. 'Gone no addresses' have decreased from 972 as at the previous Annual Report – 16 September 2023 to 602 as at 31 March 2024, a reduction of 26% (370).
<b>Strengthening communications with whānau</b>	Re-establish regular communications that are targeted, timely and inspire engagement about the work we do on their behalf, the issues that are affecting the Hapū and the opportunities available to the whānau.	The communications with whānau to keep whānau connected and up to date on kaupapa in the financial year included: <ul style="list-style-type: none"> <li>• 44 MTT Pānui</li> <li>• 86 Facebook posts</li> </ul> An updated Communications Strategy and Plan is being developed and implemented in 2024- 2025.
<b>Strengthening our governance practice</b>	Growing competent Trustees through regular training, effective documented practices and experiences to grow their skills. Document a Trustee onboarding and development programme.	Both the Toihau and Deputy Chair attended training for chairpersons run by the Institute of Directors. More regular training is needed for new and current Trustees. A report has been completed with recommendations, and budget is to be secured for implementation in 2024- 2025.
<b>Strengthening MTT's Information Technology / Information Services</b>	Confirm and implement MTT data management plan that sets out how we will file, access, engage, use, design and protect data, and future proof information technology infrastructure to drive MTT decision-making.	Initial research has been undertaken but more work needs to be done in 2024-2025.



# Rautaki ā-Tau 2024-2025

## MTT Annual Plan 1 April 2024 – 31 March 2025

MTT Strategic Outcome Statements	
Activity	Description
<b>Kia Manawaroa, Maranga e Tū – Recovery &amp; Resilience</b>	
<b>Maungaharuru-Tangitū Recovery Plan Programme</b>	Continue to develop, promote and support MTT Locality Plan with key initiatives- Marae, housing, resilient land for papakāinga, strengthen health and wellbeing of Hapū communities, resilient infrastructure, primary sector, and emergency preparedness.
<b>Kia Niwha – Strong people</b>	
<b>Engaging with and reporting to Hapū members</b>	Ensure effective engagement with registered Hapū members across all demographics. Engage with whānau to share their ideas and feedback and to express what is of interest to them. Demonstrate regular communication using multiple channels to reach whānau of all ages and locations.
<b>Continue support for the Hunting Club</b>	Provide administration and policy support to enable multi-generational learnings, allow whānau to be fed from the whenua, provide kai for manaakitanga and to express kaitiakitanga safely and in accordance with tikanga.
<b>Kia Rirā Te Pā Kai Ngā Rekereke – Strong Culture, Reo &amp; Marae</b>	
<b>Whakatipu kaitiaki programme</b>	Successfully facilitate one rangatahi (12-18 years) wānanga to build cultural capabilities and be united by them through te taiao learning experiences. The programme is available to all rangatahi of Ahuriri Hapū. (Funded by Pan Pac Environmental Trust)
<b>Kia haruru anō te reo Māori - our language will reverberate again</b>	Seeking funding to support whānau participation in wānanga reo.
<b>Kōrero tuku iho - Archiving historical information</b>	Progress plan to collate, reference, and archive the data we have about whakapapa and kōrero tuku iho so that they are protected, coherent and readily accessible, providing a resource that benefits current and future generations.
<b>Te Rerenga Kārearea project</b>	Design and erect six i-Pou near wāhi taonga to share information kōrero, challenges and activities relating to those taonga (funded by Te Urungi: Innovating Aotearoa).
<b>Kia Rawaka – Strong Hapū Economy</b>	
<b>Investing and growing the assets</b>	Ensure that the investment assets are invested responsibly, provide a reasonable return, and grow at a rate corresponding to the growth of the Hapū and MTT's need to provide for the needs and activities of the Hapū as provided in the MTT's SIPO.
<b>Sourcing Funding</b>	Develop and implement a Funding Policy and Procedures (including budget template) to assist the MTT Board to prioritise projects and support operations to seek funding opportunities.

## MTT Strategic Outcome Statements

Activity	Description
----------	-------------

### He Kāinga Taurikura – A Treasured Environment

<b>Managing Resource Consents and Cultural Impact Assessments</b>	Actively participate in the RMA consents process within statutory timeframes to protect Hapū cultural and environmental interests. Ensure MTT is appraised of potential developments and consent applications, in dialogue with developers and consenting authorities and negative impacts are avoided or mitigated, and positive impacts enhanced at no cost to MTT. Inform Hapū of the work that MTT is undertaking. Ensure developers and consenting authorities are aware of MTT advocating for the rights and interests of the Hapū in the taiao.
<b>Finalising Hapū Environmental Management Plan</b>	Position statements on wāhi taonga, wai, Tangitū, and Maungaharuru are researched, consulted, and documented in the HEMP. The draft HEMP is consulted with Hapū and proposed users and provides clear guidance for Hapū, developers, local authorities, and central government about the Hapū vision, values, issues, preferred solutions, and bottom lines for various aspects of the taiao.
<b>Progressing our application under the Takutai Moana (Marine and Coastal Area) Act</b>	Take necessary steps to protect the rights and interests of the hapū within the takutai moana mai Waitaha ki Keteketerau and Pānia reef.
<b>He Kāinga Taurikura o Tangitū Project</b>	Share with whānau the baseline research of the kuku reef and the Maungaharuru-Tangitū cultural assessment framework that draws on mātauranga ā-hapū, technology and practical whānau know how.
<b>Manu Tāiko - Kia eke te Ngarue! Kia eke Arapawanui!</b>	To exercise kaitiakitanga by undertaking targeted restoration and cultural monitoring activities (mai Maungaharuru ki Tangitū), which is achieved by Manu Tāiko and whānau.
<b>Progressing Hapū input into the Kotahi Plan</b>	Actively protect the rights and interests of the Hapū in the new Hawke's Bay Regional Council Kotahi Plan (one plan to replace all existing HBRC resource management plans). Identify the vision, values, issues, and not negotiable positions for key awa and takutai moana within the Takiwā. Consult with the Hapū and present to the Hawke's Bay Regional Council for inclusion in Kotahi Plan.
<b>Protecting Wāhi Taonga</b>	Compile comprehensive information (kōrero, whakapapa, maps, archaeological, historical, photographic) for 15 wāhi taonga for protection under the Napier City Council and Hastings District Council plans.

### He Waka Kairangatira – MTT Group is a Great Organisation

<b>Engaging our Kāhui kaumātua and kaumātua whānui</b>	Ensure that the Kāhui Kaumātua is supported to do its mahi (advise on whakapapa, tikanga, reo and kaupapa), provide the Kāhui Kaumātua assistance to organise and engage our wider kaumātua in enjoyable events.
<b>Whakawhanaungatanga - registering our whānau</b>	Identify and register all eligible whānau and have up-to-date contact details about them to ensure ongoing connection, communication, and accountability to our whānau.
<b>Strengthening communications with whānau</b>	Re-establish regular communications that are targeted, timely and inspire engagement about the work we do on their behalf, the issues that are affecting the Hapū and the opportunities available to the whānau.
<b>Strengthening our governance practice</b>	Growing competent Trustees through regular training, effective documented practices, and experiences to grow their skills. Document a Trustee onboarding and development programme.
<b>Strengthening MTT's Information Technology / Information Services</b>	Confirm and implement MTT data management plan that sets out how we will file, access, engage, use, design and protect data, and future proof information technology infrastructure to drive MTT decision-making.





*Opouahi Station. Photo Credits Johann Geelen de Kabath*





**Pūronga Pūtea**  
Group Performance at a Glance

---

# Maungaharuru-Tangitū Trust Group Financial Reports

## For the 12 months ended 31 March 2024

### Overall comment:

The 31 March 2023 financial statements were prepared closely after Cyclone Garielle hit and the resulting flooding on 14 February, with estimated asset impairments and immediate rescue efforts occurring between this date and the balance date. The year ended 31 March 2024 has been dominated with the further response, recovery and rebuild – which is ongoing – with much of the financial activity for the Trust reflecting these massive efforts from the wider Maungaharuru-Tangitū team.

### Summary Profit and Loss

#### Income:

**Rent Received** includes rent from Opouahi Station, Esk Forest, the commercial properties situated in Palmerston North and Takanini, South Auckland, as well as loss of rents insurance proceeds from the damaged property in Allen Road, Pākōwhai. **Investment Income** includes interest from term deposits, dividends from shareholdings and income from the Trust's investments in its Fund Managers: Mint Asset Management Limited, Milford Asset Management Limited and Continuity Capital Limited Partnership. It has increased from FY2023 because of better market conditions for the fund managers and increased interest rates for the term deposits. We have separated out the **Cyclone Gabrielle Response Funding** received from the **Grant Funding** to show how much funding had been received specifically for the recovery efforts. It has been an incredible effort from the team to secure this level of funding. The level of Grant Funding shows that there has still been a number of special projects undertaken by the Trust in parallel to the Cyclone Gabrielle response. **Share of loss from Kaiwaka Joint Venture** is the Trust's input costs into the shared stumpage joint venture with Rayonier Matariki, which is the rent on the land included in the joint venture, rates paid on that land, and in this year there was a contribution to the roading costs from Cyclone Gabrielle damage. **Other Revenue** includes insurance proceeds from damage to the Allen Road property, payment from Pāmu for fertiliser for Opouahi Station, gain on sale of Allen Road, and reimbursement of MACA costs to be received from Te Arawhiti.

#### Expenses:

The **Administration and Operating** expenses have remained consistent from the previous year, which in a time of inflation represents good management. These costs include governance expenses, office expenses, staff training & travel, rates and insurance from three commercial property investments, depreciation on property, plant and equipment, repairs and maintenance costs on Opouahi Station, Hui-ā-Hapū costs and communication. **Salaries** have decreased slightly from FY2023 to FY2024 as employee and contractor headcount also decreased slightly. Just as we separately disclosed the Cyclone Gabrielle related funding income received, so too have we separately disclosed **Cyclone Gabrielle Response Costs**, which include remedial work on the damaged investment properties at Opouahi, Esk and Allen Road as well as at Tangoio, and various response initiatives throughout the year. **Special Projects and Advisors** are the cost to the Trust of working through a number of strategically, economically and culturally important focus areas, which are funded through the Grant Funding received mentioned above. This has reduced from FY2023 because of the focus on the Cyclone Gabrielle response initiatives but still at a level where some key priorities of the Trust were undertaken.



## Other Comprehensive Income:

This section shows the non-cash gains (or losses) in the assets of the Group. The **Increase in Value of Investment Properties** of \$81,509 is the gain on sale of the Allen Road property. To get a gain on the sale of this property was an excellent result following the damage that it received from Cyclone Gabrielle. Opouahi Station and Esk Forest land aren't due to have registered valuation assessment until October 2025 but following Cyclone Gabrielle a desktop assessment was performed in FY23 with the resulting estimated impairments to these properties and the Allen Road property accounted for in last year's financials. Similarly, a desktop assessment by the Trust's valuers was performed this year with the previous year's impairment of Esk Forest now being reversed. After the negative volatility of the share market over the previous year meaning a reduction in the market value of the Trust's **Investments in Shares and Fund Managers**, this year the market has rebounded and there is a positive revaluation of these assets. This year we have included the Trust's Share of the Kaiwaka JV tree crop. This represents how much the Trust would receive from the proceeds of the Kaiwaka JV tree harvest. As the trees age over time and more trees are included in the JV, this value is expected to rise. All this has resulted in the Group's **Total Comprehensive Income for the Year being \$7,178,949.**

## Summary Balance Sheet

### Assets (this is what the Trust owns):

The **Opouahi Station and Esk Forest** properties weren't revalued this year but the estimated impairment on the Esk Forest land was reversed and we have included the Trust's share of the **Kaiwaka JV Tree Crop**. The decrease in **Commercial Properties** from FY2023 is the sale of the Allen Road property with the properties in Palmerston North and Takanini being accounted for at their cost price. **Cash & Term Deposits** is cash held at the bank as well as term deposits invested, which includes the proceeds from the sale of Allen Road. **Managed Funds** are the Trust's investments in Mint Asset Management Limited, Milford Asset Management Limited and Continuity Capital Limited Partnership. **Property, Plant & Equipment** includes the Tangoio property purchased off the Doohan whānau in FY21 plus office fitout and motor vehicles. **Cabin Project – Work in Progress** is the cost of commissioning the cabins used to house those whānau who have relocated from their Category 3 homes. This includes the purchase of the cabins, site preparation, ground works and infrastructure. Once completed, the final cost will be shown on the asset register as Property owned by the Trust. **Other Assets** includes trade receivables, which is mainly Grant Income applied for during the 2024 financial year but not received until after Balance Date.

### Liabilities (this is what the Trust owes):

**Current Liabilities** consist of Accounts Payable, which are paid within the two months following Balance Date, as well as Income Received in Advance, which is rent received for the Esk Forest land, Opouahi Station, and the Takanini property in advance of when it is due, and Grant Funding received but will be applied to related expenses after Balance Date. The **Non Current Liabilities** owed by the Trust is a loan taken out to fund the office fitout and an estimated amount committed by the Trust to relocate the cabins once the current ground lease with Napier City Council expires in August 2026.

### Equity (this is the net wealth of the Trust):

If the Trust sold up all its assets and repaid all its liabilities, this is how much cash it would have. **Total Equity** (wealth) of the Trust for the year has increased by \$7,178,949, which is the Total Comprehensive Income for the Year, to **\$63,791,018.**



# Maungaharuru-Tangitū Trust Group Summary Profit and Loss

## For the 12 months ended 31 March 2024

		2024 \$ 12 months	2023 \$ 12 months	2022 \$ 12 months
<b>Income</b>				
Rent Received	1	1,823,464	1,670,156	1,151,865
Investment Income	2	382,701	262,485	421,955
Cyclone Gabrielle Response Funding	3	3,756,802		
Grant Funding		984,891	2,083,734	845,074
Share of loss from Kaiwaka Joint Venture	4	(225,662)	(113,832)	( 80,511)
Other Income		529,144	724,919	465,905
<b>Total Income</b>		<b>7,251,340</b>	<b>4,627,462</b>	<b>2,804,288</b>
<b>Expenses</b>				
Administration and Operating		1,065,515	1,053,831	751,533
Salaries		1,426,070	1,637,291	920,424
Cyclone Gabrielle Response Costs	1	1,450,094		
Special Projects and Advisors		973,903	1,332,101	724,087
Income tax expense / (benefit)	2	(162,978)	-	
<b>Total Expenses</b>		<b>4,752,604</b>	<b>4,023,223</b>	<b>2,396,044</b>
<b>Profit for the Year</b>		<b>2,498,736</b>	<b>604,239</b>	<b>408,244</b>
<b>Other Comprehensive Income</b>				
Increase in Value of Investment Properties		81,509	7,730,000	-
Revaluation of Investments in Shares and Managed Funds		430,226	(257,051)	831,897
(Impairment) / Reversal of Investment Property due to Cyclone Gabrielle		2,663,072	(3,583,072)	-
Share of Increase in Fair Value Adjustment of Equity Accounted JV		2,179,000		
Marae development costs written off		(673,595)	-	-
<b>Total Other Comprehensive Income</b>		<b>4,680,212</b>	<b>3,889,877</b>	<b>831,897</b>
<b>Total Comprehensive Income for the Year</b>		<b>7,178,949</b>	<b>4,494,116</b>	<b>1,240,141</b>

1. Rent received on farm, forest and commercial properties  
2. Income from fund managers, private equity, interest and dividends  
3. Funding received from MHUD, Te Aka Whai Ora, TPK, HBRC, Te Arawhiti, insurance proceeds  
4. This is MTT's share of JV net loss

1. These Cyclone Gabrielle response costs exclude the Cabin project but include repairs to Opouahi and Allen Road, whānau care packages, silt and debris removal  
2. This is the Income Tax refund

This section shows the non-cash gains/losses in assets

# Maungaharuru-Tangitū Trust Group Summary Balance Sheet As at 31 March 2024

		2024 \$	2023 \$	2022 \$
<b>Assets (this is what the Trust owns)</b>				
Esk Forest Land & Share of Tree Crop	1	13,779,000	10,400,000	9,200,000
Opouahi Station		20,110,000	20,110,000	15,700,000
Commercial Properties	2	11,998,108	13,036,417	12,073,108
Cash & Term Deposits		7,571,301	4,903,999	5,432,165
Managed Funds	3	7,186,035	6,731,389	8,878,079
Shares- Napier Port Holdings Limited		436,842	472,503	488,121
Property, Plant & Equipment		831,465	848,585	776,709
Cabin Project- Work in Progress	4	2,433,298		
Other Assets		1,751,076	1,527,104	1,369,746
<b>Total Assets</b>		<b>66,097,125</b>	<b>58,029,997</b>	<b>53,917,928</b>
<b>Liabilities (this is what the Trust owes)</b>				
Current Liabilities		1,874,612	1,368,415	1,735,972
Non Current Liabilities		431,495	49,512	64,003
<b>Total Liabilities</b>		<b>2,306,107</b>	<b>1,417,927</b>	<b>1,799,975</b>
<b>Equity (this is the net wealth of the Trust)</b>				
Capital and Retained Earnings		60,398,149	53,219,202	48,725,085
Marae Development Reserve	5	3,000,000	3,000,000	3,000,000
Whenua Taonga Reserve		392,868	392,868	392,868
<b>Total Equity</b>		<b>63,791,018</b>	<b>56,612,070</b>	<b>52,117,953</b>

1. This includes MTT's share of the Kaiwaka JV tree crop
2. The Allen Road, Pākōwhai property was sold during the year
3. This is the investment in Mint, Milford and Continuity Capital
4. This is the cost of the Cabin project as at Balance Date
5. Income from this Reserve has been used for donations to the Marae as well as expenses incurred during the Marae Development project.

# Papakupu Glossary

<b>Hākinakina</b>	Sports		places
<b>Hapū</b>	Sub-tribe	<b>Pōhiri</b>	Welcome ceremony
<b>Hīnaki</b>	Eel trap	<b>Rangatahi</b>	Young people, teenagers
<b>Hui ā-hapū</b>	Meeting for people of our tribe	<b>Reo</b>	Language
<b>i-Pou</b>	A Pou with a QR code that links to web content	<b>Rohe</b>	Region
<b>Kai</b>	Food	<b>Rongoā</b>	Traditional Māori medicine / medicinal plants
<b>Kaiārahi</b>	Guide	<b>Taiao</b>	Natural environment
<b>Kaimahi</b>	Staff	<b>Takiwā</b>	Traditional area
<b>Kaitiakitanga</b>	Guardianship	<b>Tangihanga</b>	Funeral ceremony
<b>Kākahi</b>	Freshwater mussel	<b>Tauira</b>	Student
<b>Karakia</b>	Prayer	<b>Tino rangatiratanga</b>	Self-determination, sovereignty
<b>Kaumātua</b>	Elder, a person of status	<b>Tuna</b>	Eel
<b>Kōrero</b>	Talk	<b>Wāhi taonga</b>	Sacred place
<b>Mahinga kai</b>	Garden to cultivate food	<b>Wānanga</b>	Tribal knowledge, to meet and discuss
<b>Manawanui</b>	Dedicated	<b>Whakatauākī</b>	Proverb, significant saying
<b>Manuhiri</b>	Visitor, guest	<b>Whanaunga</b>	Relationships
<b>Maramataka</b>	Māori lunar calendar	<b>Whakawhānaungatanga</b>	Process of establishing relationships
<b>Matariki</b>	Māori New Year	<b>Whānau</b>	Family group, extended family
<b>Mātauranga</b>	Knowledge, education	<b>Whanaunga</b>	Relative
<b>Mauri</b>	Life force	<b>Wharenui</b>	Meeting house
<b>Mokopuna</b>	Grandchild	<b>Whenua</b>	Land
<b>Ngahere</b>	Forest		
<b>Ngā manaakitanga</b>	With best wishes		
<b>Ngā mihi nui</b>	Thank you very much		
<b>Pou</b>	Posts to mark significant		





# Hui ā-Tau

## Annual General Meeting

---

10 karaka i te ata, Rāhoroi te 27 o Hōngongoi 2024  
10 am, Saturday 27 July 2024  
Napier War Memorial Centre, Marine Parade,  
Napier

---



## Notice of AGM

---

The Maungaharuru-Tangitū Trust (MTT) gives notice that the Hui ā -Tau (Annual General Meeting, AGM) will be held at 10am, Saturday, 27 July 2024 at Napier War Memorial Centre, Marine Parade, Napier.





## Rārangi Upoko Contents

---

Ngā Meneti o te Hui ā -Tau  
Unconfirmed minutes of AGM 16 September 2023 54

Tautapa Taratī  
Trustee Nominations 62

## Rārangi Take Agenda

---

1. Te Hanganga o MTT – MTT Group Organisational Structure
2. Unconfirmed Minutes of AGM 16 September 2023
3. Pūrongo ā-Tau – Annual Report 2023-2024
4. Pūrongo Pūtea – Financial Report
5. Rautaki ā-Tau – MTT Annual Plan 2024
6. Mōtini – General Resolutions
7. Pānui kōrero – General Business
9. Whakamana / Tautapa Taratī –  
Confirmation of Trustees for two vacant positions

The Pūrongo ā-Tau (Annual Report) booklet with the voting form for Trustee elections was posted on **28 June 2024** to each adult registered member of the Trust. Copies of a full set of the Audited Financial Statements are available in the members' section of our website [www.tangoio.maori.nz](http://www.tangoio.maori.nz) or a copy can be requested via the contacts below.

All enquiries to the Tari:  
06 835 3300, 0800 TANGOIO / 0800 826 4646  
or [info@tangoio.maori.nz](mailto:info@tangoio.maori.nz)





# Ngā Meneti o te Hui ā-Tau

## Unconfirmed minutes of Hui ā-Tau (Annual General Meeting 2023)

### Maungaharuru-Tangitū Trust

### Napier War Memorial Centre

10 karaka i te ata, Rāhoroi te 16 Mahuru 2023  
(10.00 am Saturday 16 September 2023)

**Present:** As per attendance register.

**Trustees:** Tania Hopmans, (Toihau, Chairperson), Kelly May (Deputy Chairperson), Charmaine Butler, Robbie Paul, and Coralee Thompson.

**On Zoom:** Mara Andrews and George Puna (until 10.36 am).

**Directors:** Anthony Bow (Chairperson) Maungaharuru-Tangitū Limited (MTL), Tamehana (Tom) Manaena, and Charmaine Butler.

**External Advisors:** Campbell Furlong, (Partner, PricewaterhouseCoopers)

**Staff/Contractors:** Liz Munroe (Kaiwhakahaere Matua, Acting Chief Executive Officer) and (Kaiwhakahaere Taiao - Taiao General Manager), Nesi Taurima-Nuku (Kaiāwhina Kaitatau/Tari-Finance & Administration), Samson Wainohu (Kaiāwhina Matahiko – IT Digital Advisor/Kaihoahoa Whakapā – Communication Specialist), Diana Taunoa (Resource Consents Administrator), Abigail Hendra (Kaiwhakahaere Kaupapa (Marae Development Project Coordinator and Pou Whakapā (Communications Manager), Kelly Neera (Kaiāwhina Tari (Receptionist Administrator), Madison King (Kaiāwhina Whakapā (Communications Assistant), Gilmour Taunoa (Kaiāwhina Tari | Reception & Administration) and Linda McCully (Minute Secretary).

**Whānau:** Awhina Taurima, Te Roa Takie, Rose Hiha, Junior (Sammy) Taurima, Charles Taurima, Pauline Whiting, Neville Saunders, Rangi Tawhai, Elaine Cook, Evelyn Ratima, Sabre (Thursday) Puna, Lewis Neera, Paulette Taurima, Kaylene Kani, Richard Taurima, Sade Elers, Janie Thomas, Shane Taurima, Polly Spooner, Alice Taylor, Ngaire Saunders, Heeni Taane, Renee Eaves, Ruby Wells, Allan Taylor, George Tawhai, Violet Stevens, Janice Stevens, Teaiorangi Taurima, Kahurangi Cherrington, Jessica McGregor, Lizzie Taurima, Agnes (Poppy) Taylor, Clifford Tarau, Sharon Albert, Kevin Rollinson, Bevan Taylor, Nani Taane, John (Alpha) Dixon, Whakiao Hopmans, Erin Puna, Gaynor Chrystal, George (Hōri) Reti, Joe Taylor, Anne Aroha Hiha, Allana Hiha, Maree Brown, Tamati Taurere, & Charlotte Honeycomb.

Hapū members who were not on the attendance list but present in the Hui ā-Tau.

Rangi Tawhai

**Via Zoom:** Kelly Neera (staff online assisting Nesi), Paula Rewi, Barbara Smith, Mike Taane, Bronwyn Raybould, Hohepa Spooner, Thomas Makea, Kahurangi Burkitt, Petane Marae – Mary Martin, Aroha Taane, and Nicola Kihirini.

**Apologies:** Given at hui by email and as per Apologies List

**Hui:** George Puna (overseas)

**Email:** Jacqueline Jones-Turipa (8/9/23) and Richard T Pohio (17/09/23).

**Apologies List:** Aunty Whawha Puna, Guy Te Kahika, Denise Taunoa, Rodney Whippy, Tania Taane, Marama Taane, Thomas Makea (for non-personal attendance- online), Aroha Taurima, Dayna Peterson, Jakita-Lee Antcliff, Kayla Taurima, Jackie Hawaikirangi, Angela Spooner, Rangi Spooner, Natalia Taurima-Hinton, Tui Puna, Robert Taurima, Whakiao Taurima, Joeseeph Arona Taurima, Taryn Taurima, Charlotte Taurima- Thomas, Tane Thomas, Horinui Taurima, Marion Cotter, Jada Baker, Memory Puna, Hannah Puna, Trish Puna, Tawhiti Puna and Jackie Puna.

**Karakia:** Hōri Reti.

**Mihimihi:** Bevan Taylor (Pou) after a moment's silence for those who have passed since the last Hui ā Tau.

**Whakawhanaungatanga:** The Chairperson, Tania Hopmans, welcomed everyone in hui and those online. Those in the room are asked to introduce themselves with their name and where they came from to be here today along with a word that is significant to them. Encouragement given to speak Te Reo, particularly as it is Māori Language Week.

### 1. Kawa o te Hui ā-Tau (Protocols of the AGM)

Everyone was reminded to sign in and record apologies for those who are not able to attend. Those on Zoom can use the chat box to ask questions. If you are in the hui, please put your hand up. Questions are to be asked at the end of each section. The hui is being recorded. Emergency and evacuation procedures were outlined. Car parking passes were advised as being available to those parked out the back.

## 2. Ngā whānau – trust membership

Coralee spoke to this slide. Currently MTT has 6,231 registered members, which is an increase of around 86. Any new births please let us know. There are still a lot of whānau who we do not know where they are. If you know of anyone who has moved, please let the tari know. 50% are aged 10 – 29 and more up to 39. We need to target our mahi to our younger people which is a work in progress.

- Q. In regard to members in Australia, are some of my whānau registered? If not, I will chase them up.
- A. Speak to Nesi or Charmaine who can advise if they are registered.

## 3. Te Hanganga o MTT (MTT Group Organisation Structure)

Robbie Paul spoke to this slide. Slide shown setting out the various structures shown on screen with a brief description of each entity, which has not changed from last year.

## Tae ā tinana – Trustee Attendance April 2022 to March 2023.

Robbie Paul spoke about the number of hui attended (9 scheduled and 4 unscheduled) for MTT/MTCT as well as work done in the background outside of hui to get things running.

## Utu Kaitiaki – Trustees’ Fees

Noted that these are required to be reviewed every year and that we are paid a lot less than many other iwi groups. These were last updated as at 20 September 2022 (backdated to 1 April 2022).

Chart shown comparing those received by the neighbouring iwi and the current fees set for our Trustees.

PSGE	Trustee	Deputy Chair	Chair
MTT	\$9,000	\$12,000	\$17,000
Ngāti Pāhauwera	\$18,500	\$20,000	\$90,000
Ngāti Hineuru	\$37,600	\$38,100	\$52,000
Tātau Tātau	\$30,000	\$30,000	\$50,000
Ngāti Porou	\$30,000	\$38,000	\$60,000

- Q Why are our Trustees paid a lot less than others?
- A External advice was obtained and they expressed the view that much more should be paid. However, the

Trustees are not here for the money but to ensure that as a Hapū we get the job done.

- Q. That is understood but the cost of living has gone up a lot. The fees there do not cover much.
- A. The travel expenses are covered by MTT and are not included in the fees shown.
- Q. The work done is acknowledged as is the finance, ensuring that the income exceeds the expenses.
- A. Thank you.
- Q. Do not think the salary is enough.
- A. Thank you but we do it for love. The remuneration is reviewed annually and it will be reviewed this year because we have not done that so far. We do want to attract and keep good people with talent. It is about the work that we do. The money can help to remunerate the time and effort put in.

## 4. Ngā Meneti a te Hui ā Tau (Minutes of the AGM 2022)

Taken as read.

**Resolution:** That Minutes of the previous Hui ā-Tau dated 24 September 2022 be accepted.

**Moved:** Ruby Wells

**Seconded:** Whakiao Hopmans

## All agreed

There were no matters arising from the minutes.

## 5. Pūrongo Toihau – Message from the Chairperson

It is hard to recall what happened before 13 and 14 February 2023 when Cyclone Gabrielle hit us. Noted that everyone has rallied together “Be hearty – rise up”. Strangers turned up to help with diggers and people dropped off food. Much aroha was shown to us and this is being acknowledged today. Our taonga, the Marae, has been massively impacted. Holding fast to hope and aroha to help us get through it. There have been plenty of times as a Hapū where we have had to dig deep to rise up. The perseverance of our tīpuna and our whānau who helped build the marae and the wharenuī by fund raising. They were a long time coming. We have been working hard to achieve things. We have achieved things that we have been told we could not do such as reaching settlement on our own and stopping one wind farm.

We will have a marae and papakāianga – we will. Let’s stay close, let’s stay united – that’s how we get stuff done.

## 6. Pūrongo ā-Tau (Annual Report 2022 - 2023)

The booklet was posted to all registered adult members and copies were also available at the Hui ā-Tau. A video was played setting out what has been done and various activities undertaken.

### Kia Niwha – Strong People

Cyclone Gabrielle Response. As many registered whānau as possible were visited. Care packages were delivered and some were delivered by helicopter to isolated areas. Silt was dug from the Marae and assistance was provided for the initial clean up of taonga.

### Kāhui Kaumātua

Four meetings were held along with a Matariki and Christmas function. Their role is to provide advice and guidance to MTT Trustees on matters of tikanga, reo, kawa and whakapapa of the Hapū. They provide guidance on key areas such as the Marae Development programme, succession planning, key projects and elements in the Taiao space which they regularly monitor. We greatly appreciate their efforts.

### Whakatipu Kaitiaki

More than 36 rangatahi from the seven hapū were treated to a range of experiences over three wānanga held in July, October and January school holidays. There were a range of challenges and activities for them to participate in such as sailing waka, meat boning and pest control in our takiwā. These provide rangatahi with the opportunity to gain a deeper understanding of their whenua, kaupapa and kaitiakitanga. Future events are being planned.

### Whānau Hauora day

This was held the weekend before the full force of Cyclone Gabrielle arrived and was a great success. Whānau and the wider community attended basketball games and stores offering a range of goods and services.

### Kai Rirā te Pā kai Ngā Rekereke

#### Strong Culture Reo and Marae

Three wānanga Reo held during the year with the final on Saturday 11 March 2023 celebrating the launch of the pukapuka “Ngā Pūrākau mō Maungaharuru me Tangitū. This was written by Justin Puna and illustrated by Karina Reti. This is the stunning result of the efforts of a small group of dedicated people, including Hayley Lawrence and Louise Whaanga. It tells two legends – one of our mountain, Maungaharuru and the other of our sea, Tangitū.

### Marae Development Project

Regular meetings were held throughout the year and through focus groups and Hui ā-Hapū, Option B “The Courtyard Scheme” was selected and the resource

consent was filed with Council. With the land no longer suitable for a marae where people would stay overnight, the priority focus now is on finding a temporary solution and suitable land on which to locate the Marae.

### A Treasured Environment

Three Kākā were released under the Poutiri Ao ō Tāne project. Two females, Hinemaia and Taua, and one male, Wera, were named by the three iwi/hapū that share the Maungaharuru range (the Maungaharuru-Tangitū Hapū, Ngāti Hineuru and Ngāti Pāhauwera). They have joined the growing population of around 30 birds translocated into the area since 2013.

### Manu Tāiko

Natives planted, tracks maintained, pests and weeds controlled, water testing and various forms of training were undertaken. Sustainable seas funding obtained and worked with NIWA to assess the reef health. Data was collected last November which is being compared to now post Cyclone Gabrielle. The project is due to end this November.

### Kia Rawaka – Strong Hapū Economy –

Opouahi Station. Some land leased for farming in the short term. Good practices ensured we ended in a good financial position with Private Equity funds and physical assets out of the region allowing us to continue recovery efforts and consider further opportunities.

- Q. What is the impact by scale on the assets that MTT holds?
- A. A good number were impacted but Anthony will answer that shortly.
- Q. Query re planting pines. A lot of property was destroyed by Pan Pac’s pines. We need to be aware if we allow pines on our whenua, we should be sitting at the table making decisions for our people.
- A. We have interests in the Esk forest but every settlement group owns forest in one way or another as part of Treaty settlements. As part of acquiring the land, the Crown had already locked the land up for several rotations of 20 – 25 years. We cannot change that any time in the near future. The key for us is to speak with them about their management practices. Harvesting was regulated but no other practices were. Our directors have been working with the forestry companies to examine their processes and standards. The social licence that forestry companies had is gone because people are angry and want answers. A lot of whānau trusts also have forestry. We had decided 12 months ago to plant part of Opouahi in pines but have now paused that because we are concerned about the consequences of doing this.



Q. Would the Trustees entertain a mixed model, knowing that natives are slow growing? Pine is a good cash income as it is fast growing.

A. That is exactly what we have been discussing.

Q. You can only grow three 3 rotations of pines in one area.

A. You have to be committed to forestry forever because it is very difficult and expensive to change the use of forestry land back to another use. Our country is realising that pine trees are not the answer to everything. Some exotic trees provide good nurseries for native trees to come up if you do it in the right way. These are decisions for our mokopuna but we can start planning for it now.

### 7. Pūrongo ā- MTL Investments

Anthony Bow spoke to the graphs shown on screen with the details of the last three years' valuations appearing at pages 47 – 51 in the book. Assets have increased from \$26 M to about \$55 M. Esk is the yellow and has increased from \$4.5 M to about \$10 M in 2023. There is an impairment of \$1.2 M from Cyclone Gabrielle which means the accounting value has been reduced by that amount. The valuation from \$5.5 M to about \$20 M for Opouahi has then also had a reduction by about \$1 M from the damage caused by the cyclone. Most will be covered by insurance and external funding. We follow a conservative approach in our accounting practices. This value should be back to where it was in the next financial year.

Yellow and green – gone from about \$10 M to about \$30 M. The credit for that goes to the work put in by the settlement team to get those assets on board, along with the Trustees past and present.

Esk and Opouahi – we had a lot of capital gains from re-valuations of the whenua. What we did not have was cash. We have succeeded as a Board to change that mix of cash and capital gain. In 2016 – 2019 there was an increase in the yellow and green bars, driven by the settlement negotiation and by selecting the right assets. In later years from 2020 to 2023 we have had massive increases in land value and carbon credit prices from forestry. We expect normal long term growth but we do not expect massive increases in those settlement assets.

We controlled in 2014 \$20 M in cash in the blue line. It is now at purple, blue and dark blue which is now \$20- \$24M. This is comprised of commercial property, managed funds and some cash. This has basically funded things for 10 years that MTT has done for the whānau and the Hapū.

Again, there is a potential loss from an accounting perspective on Allen Road. We expect that to reverse back out and we will do well out of it from the time that we have had it which is just over a year today. Shares are very volatile at the moment and we are just coming out of a down turn in equities.

You may say- We have \$20 M cash – why don't we leave it there because interest rates are 5 – 6% now?.

When we convert from cash to other assets, we wanted to make sure that we had quality, consistent income. We get both income and capital gain from the commercial investments. The portfolio has been diversified and the asset quality has been improved.

The income slide shows only cash income and does not include any re-valuations. This does not include any income from MTT for grant funded projects. \$1.3M with \$1M of that coming from interest. If we had held that as cash, our income would have dropped massively. The blue box of \$1 M in 2014 is now the purple from commercial properties from late 2021 to 2023. This has exceeded the interest rates that would have been achieved from interest rates on cash alone. It is possible to sell those assets and obtain the capital gain from those if they are sold at the appropriate time.

The orange bar shows income from Esk and Opouahi, which have slowly increased over time. The increase is due to the increase in land values so the rent has been able to be increased based on the increased land value. As a yield percentage of return, our income has not trebled. We need to balance out the lower yields from the settlement assets with the higher yields from the commercial assets. In the near to medium future, the orange line will start to fall away because the income from the rental from Pan Pac is reducing because of the arrangement with the Kaiwaka JV as Pan Pac hands back forestry that the Kaiwaka JV will then manage as forestry. We are giving up cash flow now for cash flow in the future.

The orange line at the top is income from managed funds and PE. Over the long term these assets have produced good returns for us.

The Board strategy has been able to diversify income and improve the income quality received.

The directors will continue to pursue good investment opportunities as they arise and will commence judiciously to use debt to continue our strategy of diversion of the portfolio and obtaining cash generating assets.

Q. Could you elaborate on the decision making process for obtaining these assets? Would you look back at the data for a commercial property, how it has

performed in previous years and then project what it will be in future years? Is that how you look at it?

- A. When you look at the MTL portfolio, we need to keep producing cash. We have capital gaining assets but need cash. We make sure that we have a diversified portfolio. We are about to start using leverage to acquire future assets.

We have cash as a rainy day fund and financial assets. Commercial property as an income earner. You could buy into a real business such as an orchard but we were less likely to do this initially because we are a small board. Once we have debt available we will look at this.

When we looked at properties, we avoided retail. Essential services with a stable cash flow are the focus. Valor Drive is leased to Downers as a contracting and engineering company. Tironui Road is leased to Corrections, a Crown entity in a sought after location. Allen Road had the landscape supplier and nursery – Oderings. It was a good piece of land at a good price. We do follow a set of rules but if there is an opportunity, we take it.

- Q. Do you work together towards making the decision and then put it to the Board?
- A. Commercial manager sources the opportunities. We discuss them, once a certain amount of due diligence has been done. Then either dismiss it or ask for further due diligence if it is an opportunity we see merit in pursuing. Two thirds we would turn down, and, about one third we would ask for some further work. We then start having discussions around what price we would pay for the asset at a formal Board hui. So we are also the investment committee as well and we pre-screen those opportunities.
- Q. What type of lease are the tenants on?
- A. Long terms with rights of renewal. Tironui Road has a right of renewal in December which they have said they will do for at least 3 years. We are trying to work with them to lengthen it considerably. It is very hard for them to move elsewhere and they own most of their own properties.
- Q. Shareholdings for Napier Port. They look as if they are staying where they are? Keeping or not?
- A. On the cards to sell and invest elsewhere. Just keeping this at the moment.
- Q. Where do the MTT Trustees come in on the decision making process?
- A. We have a Board of three. We have a former Trustee (Tom) and Charmaine is now the current Trustee

member. We have a SIPO which sets a threshold over which the Board must come back to MTT for a formal agreement to make the decision.

- Q. Summary of Profit & Loss. Does MTL have a set annual dividend that they pay to MTT? Would like to more easily see the operating expenses annually.
- A. Campbell will explain that shortly.
- Q. Marae Reserves on page 51 have remained the same. Why would it not be a growing investment? Managed Funds have reduced – has that been used for other investments?
- A. Yes – commercial properties and a new PE fund.

## 8. Pūrongo Pūtea - Group Performance at a glance

Campbell spoke to this. Noted that the written version was in the AGM booklet at page 50.

Rent received includes 2022 – 2023 it has increased by \$500 K. There has been a decrease from the year before to put the funds into Commercial property purchase. Grant funding has been sought to fund special projects. The loss on the Kaiwaka JV is only a paper loss around the rent. That land is now going into the JV and we will get the percentage from the harvest of the trees. Other income is Settlers Honey, rates reimbursement and MACA costs.

Income from \$1.8, to \$2.8 to \$4.6 M. Expenses have increased across the board, particularly rates and insurance. Salaries have increased with increased staff numbers to undertake projects. Some people were employed near the end of 2022 so 2023 has a full year of costs for salaries.

Marae Development and donations include a payment to Wharerangi Marae.

Every three years Opouahi and Esk Forest are re-valued with an increase of \$7.7M. After the cyclone the land was revalued and because of inaccessibility issues, it was a desk top valuation which reduced the value. As remedial work is done and the land heals itself, we expect the value to increase again.

Allen Road – the insurance assessors are still working on this so we have taken a conservative approach by writing the building down to zero. It is fully insured so if it is written off, we get the full sum paid back to us. The land has been cleared of silt.

The shares and managed funds are volatile as noted by Anthony. Funds were taken out of managed funds to more conservative commercial investments.

\$4.9 M as income but it would have been more had there not been the impairments.

To answer the question, MTL manages the assets owned by MTT. We do not pay a dividend as all the funds remain within MTT under MTL management.

Q. If you take the grant funding away that is what the commercial gain is for the year and then you add that back and look at the total expenses of our office. That is what I was trying to figure out as there has been an increase in expenses to run our office every year. I just wanted to know if there was an opportunity to see that separation so we can actually see what our commercial arm financials is looking like and what they are paying over because there must be operating expenses inside of MTL as well. Is this incorporated in this as well?

A. Yes as this is the total consolidated group picture. The grant funding pays for a lot of the projects and also salary costs associated with those projects. The strategy is that if you do not get the funding, the project is not undertaken. A lot of the rent and investment income pays for the operational costs.

Q. Will only \$604 K be utilised for investment?

A. Some income is reinvested as it goes, particularly in managed funds. Rent comes out. There is a strategy in place to use the balance sheet to grow the assets.

Q. Excellent financial statement considering the global situation at the moment. Noted that office expenses have doubled. How is this possible when there is no-one in the office?

A. Some of it is re-coding to office expenses.

Q. Repairs and maintenance have increased from \$32K to \$117K. What governance is in place to ensure that this does not blow out? (page 12).

A. The budget was set for the year with a profit but a re-forecast is now being done for the next six months so that the Trustees are aware of what it will look like for the next six months.

Q. What are MACA expenses?

A. A major Court case which has been partly reimbursed. This is a timing issue in terms of what shows in the accounts.

Q. Why was the Marae fund not increasing?

A. It is invested and we do get income from that but we also use that income to pay for insurance, maintenance and repairs since 2013. The ablution block, septic tanks etc. The income has been used to fund the MDC work for engineers, architects, legal and modelling. We had just filed the consent when the cyclone hit. The fund

has just been topped up by the Trustees to get back to the \$3M.

Q. Other assets? What are they?

A. Includes trade receivables (not yet received as at balance date such as approved grant funding not yet received).

Q. Has it been considered to have our own building so we do not have to pay rent each year?

A. If you can find an empty office block and tenant it yourself, the value goes up and it would then be the time to sell it. If you own it and grow or contract, it is easier to move around if you need to. It has been talked about though.

Q. Has the \$2M grant funding been fully expended across expenses?

A. Yes. Current liabilities is grant funding we have received but not spent it. It is called income received in advance and it comes through so that income and expenses match in the same year.

#### **Pūrongo Pūtea - Balance Sheet**

Slide shown on page 51 of the AGM booklet. Noted that the commercial property purchases have been successful.

#### **9. Mōtini (General Resolutions)**

**Resolutions:** Financial Statements and appointment of Auditor

(2) That the Trust's audited financial statements for the year ended 31 March 2023 be accepted.

**Moved:** Hori Reti

**Seconded:** Ruby Wells

**All agreed.**

(3) That BDO be appointed to audit the Trust's financial statements for the current financial year 1 April 2023 to 31 March 2024.

**Moved:** Richard Taurima

**Seconded:** Elaine Cook

**All agreed.**

#### **10. Rautaki ā- Tau**

The impact of Cyclone Gabrielle has meant that our priority has shifted to focus on our recovery plan.

#### **Kia Manawaroa, Maranaga e Tū – Recovery Plan**

Tania spoke to this.

Slides shown of the items currently in place to assist with the recovery.

Priority 1 is the Marae to find temporary accommodation



and look to find a permanent solution. We cannot stay on the current land which is Category 3.

We believed that ourselves and Petane were the only Category 3 Marae. There are two others so there are 4 Marae in Category 3. There is a Cyclone Recovery Unit to look at discussions with Treaty partners to get a support package for Category 3 Marae. There has just been a negotiations team put in place by the Crown and negotiations start on Monday.

We have a wealth of information and quantitative costs of what it will take to build a basic marae. We now need land as well to complete the project. They have been seeking information from us but not providing any feedback to us. The failure to address our needs with velocity is a Treaty breach which is now being addressed.

A weekly meeting is held with Hōri who reports back to the Marae Trustees.

Priority 2 is housing. We have an application in to fund some high quality cabins. Some whānau have access to Category 1 land which is good because the cabins can go there as soon as they are available. The cabins will be available for up to three years. The maximum rent is the lesser of 20% of your income and \$150.00 a week. There is a criteria that they have to be in place by 31 December 2023. The issues as to timing will be raised with the Crown on Monday as we are determined our whānau will not miss out on this opportunity. An issue is getting land in an appropriate area, close to Tangoio.

Priority 3 – Resilient Land for Papakāinga If you own general land there is an option for Council to buy out that dwelling.

If land owned by whānau is Māori freehold land (which comes under the Māori Land Court) discussions will be based on the treaty relationship with the Crown. This will be included in our discussions on Monday.

We hope to explore options to bring back to the hapū.

Q. MTT working with Marae Trustees. Have found in the past that some things have been done without discussions with kaumātua about things like changing colours being painted on the marae. Kōrero needs to be held with the people involved who initially chose those colours. Moving forward, we would like to see our Rangatahi have some tikanga to follow from our elders.

A. Response from Marae Chair Hōri. Acknowledged what has been said. Decisions around the Marae should be made by our Kāhui and hapū. No decisions will be made by us on behalf of our Marae moving forward

without it coming back to the hapū.

Q. The purpose for this hui is accountability. With this comes mihi. Wish to acknowledge the Board, the team at MTT and MTL both for what has been done but also what is intended to be done. In leading negotiations, you have our full support as you go into the fight for us.

Great to see that MTT and the Marae Trustees are working together to get things done.

Q. Could an indication be given as to when the Marae Trustees will have a Hui ā-Hapū?

A. Response from Hōri. We have been waiting to receive information from the Council and understand it ourselves. In terms of negotiations we are just moving into that now. The accounts are currently being audited and once they have been received, there will be a hapū Hui ā Tau. We hope it will be shortly.

Q. What interaction has there been from our Māori MPs?

A. Willie Jackson visited shortly after the cyclone hit. Have any others been and visited? No.

Q. Will there be further hui to keep us updated?

A. Yes. There are 12 top priorities in the recovery and we have only given you three.

Q. Where does the Marae Development Committee sit now?

A. The MDC cannot progress anything until we have land. We will resume once we can progress things.

### **11. Whakamana/Tautapa Taratī – Confirmation of Trustees**

Charmaine spoke, thanking the Trustees re-standing for election and the new candidates. Whānau heard from everyone on 29 August 2023 so everyone could be well informed before choosing. The candidates are few compared to the number of members in the hapū.

Charmaine advised that the returning officer, Anthony Morton, has confirmed the result and a slide of the result was shown.

Huia Whyte-Puna	386
Kelly May	602
Robbie Paul	424
Sherece White	212

Kelly May and Robbie Paul are the elected trustees.

Both Robbie and Kelly spoke briefly on why they had wanted to stand again.

Robbie noted that it takes considerable time to go through the Board pack which is always large. There have been numerous meetings over the year. Acknowledged Tania, Kelly and Hayley on their hard work for the recovery team.

Kelly expressed that she was both humbled and privileged to be a trustee. Her why is her whānau and mokopuna to come.

Sherece was not able to be present as she had to be elsewhere for her continuing education. Her father spoke on her behalf, saying that she congratulates those elected and that it will not be the last time that she puts her hand up. He encourages others to stand up and help us to grow.

## **12. Pānui kōrero (General Business)**

Noted that the numbers did not add up for voting in terms of the number of votes cast compared to those eligible to vote. We need to be responsible and vote, not only here but with the Government elections as well.

We need to ensure that our people get on governance boards to represent us and to ensure our voices are heard. Mana Ahuriri nominations are coming up so if you are whānau, give this consideration.

Encouraged to attend a local meet the candidates evening for the upcoming government elections. There may be the possibility of a Zoom hui for that.

The comment was made that the marae should have been up on The Point out of harm's way but the hill was cut by Pākehā. If kaumātua had been listened to, the marae would not have been in a position where it would have got flooded.

## **Hīmene**

**Karakia:** Hōri Reti

**Ka mutu:** 1.15 pm

# Tautapa Taratī

## Trustee Nominations

---

On 26 April 2024 the MTT Board called for nominations for Trustees. There are two vacant positions and three nominations received.

Therefore, as per Schedule 4 of the Trust Deed, a vote is required. The profiles of the nominees appear in alphabetical order (by surname) on the following pages, as provided by the nominees.

### Role of the Trustees

The role of the Trustees includes:

- Strategic governance
- Management of affairs, business activities, assets and liabilities
- Representing our Hapū on various matters and in various forums
- Fostering and promoting amongst members of our Hapū:
  - Spiritual values, unity, support and cooperation
  - Recognition of traditional customs and values
  - Physical, social and economic wellbeing and advancement

### Responsibilities of the Trustees

Trustees are required to produce and maintain a current five-year strategic plan and an annual plan.

The plans must include:

- Objectives
- Strategic vision
- Nature and scope of the activities to perform the objectives of the Trust
- Performance targets and measurements (which the Trust may be judged against)
- Dealing with projected income
- Proposals for activities and management of the fund.

Join the Q & A webinar for our 2024 Trustee Nominees 6pm-7pm, Wednesday, 3 July 2024. The webinar is an opportunity for our whānau to find out more about the nominees including their views on various kaupapa. See our Facebook, website and pānui for links to the webinar.



## Nominees

### Mara Andrews

**Nominated by:**

Bevan Taylor  
Ruby Spooner  
Diana Taunoa  
Coralee Thompson  
Whakiao Hopmans



Ngāti Kahungunu (Tangoio), Ngati Raukawa (Ngatokowaru), Whakatōhea (Opape)

Kia ora koutou: I am a descendant of Te Waihaki Watene Anaru (Nanny Bosun), grand-daughter of the late Teiwiwhati (Dick) Andrews Snr and daughter of the late Dick Andrews and June Andrews. I have two beautiful grown daughters and one mokopuna who I spoil rotten. My interests/hobbies are whakapapa research; working at our Urupā (yes proud to have helped put that new fence at the old Tangoio Urupal) and collecting indigenous artefacts.

I attended Napier Girls High School and Hukarere Māori Girls College and later studied at Massey University to earn management qualifications, followed by completion of an MBA (Masters in Business Administration) from Henley, UK. I am back at Massey completing a PhD - my research Thesis is about the success of Tribal Self-Governance (Tino Rangatiratanga) of USA Native American and Alaska Native Tribes. Many Tribes have taken over a significant amount of Government resources, programmes and services to govern and deliver to their people (without Government interference) and have been doing so for over 30 years, so there is much to learn from their experiences.

I have always had an interest in Iwi / Māori development - it started at home of course and the many trips to the Marae as we grew up. After I left school, I spent 13 years working for the Māori Land Court, the Māori Trustee in estate and land development, the Department of Māori

Affairs (Housing, Accounts and Community Services) and later Te Puni Kōkiri. I left Te Puni Kōkiri to move into the health arena in 1991 and worked in Māori Health where I remained in senior executive roles overseeing an annual budget of over \$85million by the time I left.

In 2000 I left to form a Māori consultancy: Kāhui Tautoko Consulting Ltd (KTCL) which has continued in business for the past 21 years. We also opened a subsidiary office in Vancouver Canada in 2008 where I lived for 11 years working with indigenous First Nations communities. That office is still operating and is very busy, despite Covid! In 2017 we opened another subsidiary in Honolulu Hawai'i to work with our Native Hawaiian cousins and completed several contracts there, before borders closed in February 2020 due to Covid. We now support our Polynesian friends remotely.

I have been back home ever since reconnecting with a number of our former and current clients and keeping busy supporting Iwi / hapū / PSGE/Māori provider organisations in strategy, service planning, embedding Te Tiriti practice; UNDRIP; workforce development, evaluation and research.

I am interested in joining as a Trustee to share the knowledge that so many have shared with me over the decades- for the benefit of our people; to play a role in protecting our whenua including our Marae, Urupa, maunga and awa; and to create a foundation for our mokopuna and the many generations to come.

## Shane Taurima

### Nominated by:

Bevan Taylor  
Matiu Eru  
Whakiao Hopmans  
Charmaine Butler  
Justin Puna



Tēnā rā koutou kei ngā whānau, kei ngā hapū o Maungaharuru-Tangitū. Huia mai ō tātau mate, hei mihi, hei tangi, hei poroporoaki mā tātau. Ko rātau ki a rātau ki te pō. Haere atu rā. Ko tātau ki a tātau i te ao tūroa nei, tēnā anō rā tātau katoa. Tīhei Tangoio, Tīhei mauriora!

Thank you for the opportunity to stand again as a Trustee, dedicated to supporting the dreams and aspirations of our whānau and hapū of Maungaharuru-Tangitū.

For six years, I had the privilege of serving as a Trustee, with five of those years spent as the Chair of the Trust. However, three years ago, I made the decision to shift my focus to my role as Chief Executive for Whakaata Māori (formerly known as Māori Television). Now, having successfully completed projects that demanded my attention and energy, I am excited about the opportunity to return to Maungaharuru-Tangitū with your support.

During my time at Whakaata Māori, I have learned to handle tough challenges and achieve our goals. One achievement that fills me with pride is the establishment of Hawaikirangi- a purpose-built training and production facility. This facility serves as a hub for creating captivating Māori content while also providing valuable training opportunities for aspiring media professionals.

In my previous roles as a Senior Ministerial Advisor and Chief Operating Officer at the Whānau Ora Commissioning Agency, I learned how the government works to support whānau in areas like health, social services, education, and overall well-being. I gained insights into Whānau Ora, which aims to help whānau achieve their goals and create better futures. This experience taught me how to navigate government systems to ensure our whānau receive the support they need.

Our main goal is to rebuild our marae, making it a special place where our whānau and hapū from Tangoio can feel proud of who we are. I believe in strength and prosperity, and I view the restoration of our marae as a vital step in rekindling our connection to our language, culture, and identity. I recognise the extensive efforts underway and still required to rebuild our marae. This mammoth project involves collaboration with both local and central government, alongside the active involvement of our community and our own whānau and hapū. It's a multifaceted endeavour, demanding careful planning and timely execution.

In closing, my goal is simple: to make real progress happen. I strongly believe in leadership that includes everyone, where every voice counts. By supporting me as your Trustee, you're choosing someone who will always fight for our whānau and hapū, both locally and nationally. Every decision I make will be about helping our community thrive and grow. With my experience, dedication, and a leadership style that brings people together, I am committed to supporting our whānau in every possible way. Just like our tīpuna, I know we can overcome any challenges together. With your help, we can make positive changes and leave a legacy that our tamariki, mokopuna, and future generations will be proud of.

## Rhonda Taylor

### Nominated by:

Warwick Gernhoefer  
Gerald Taylor  
Guy Taylor  
Maddy Taylor  
Flynn Taylor



Ko Rhonda Mateputuputu Taylor tōku ingoa. Ko Ngāti Marangatuhetaua tōku hāpu. I tipu ake ahau i Tangoio.  
Ko Gerald Taylor rāua ko Elizabeth Rihimona-Black ōku mātua.

Most of my childhood and teenage years were spent growing up in Tangoio and Bay View. I later lived and worked in Napier where I started a family before moving to Wellington.

I've worked in a range of government agencies in Wellington including the Ministry of Foreign Affairs and Trade, Ministry of Education, Child Youth and Family, Te Arawhiti, Ministry of Social Development, Office of the Childrens Commissioner, Oranga Tamariki, and the Department of Prime Minister and Cabinet, Cyclone Recovery Unit. I have a Diploma in Business Studies from UNITEC and an MBA from Victoria University among other qualifications.

I'm a strategic and analytical thinker and have extensive management experience, governance, policy, planning, financial and risk management.

It would be a privilege to use my skills and experience as a trustee to deliver positive outcomes for the benefit of whānau Māori.

If elected my focus will be on:

- Leadership with integrity, honesty and transparency
- Whānau wellbeing, financial security and sustainable wealth
- Providing opportunities to grow our future leaders.





MAUNGAHARURU  
TANGITŪ

---

### Whakapā Mai

**Tari** 1st Floor, Suite 3B, 1 Wright St, Ahuriri, Napier 4110

**Wāhi Mēra** PO Box 3376, Hawke's Bay Mail Centre, Napier 4142

**Nama Waea** (06) 835 3300 | **Nama Waea Kore Utu** 0800 TANGOIO (0800 826 4646)

**Karere ā-Rorohiko** [info@tangoio.maori.nz](mailto:info@tangoio.maori.nz) | **Pae Tukutuku** [www.tangoio.maori.nz](http://www.tangoio.maori.nz)

**FB** Maungaharuru-Tangitū | **LinkedIn** Maungaharuru-Tangitū Trust

